

Product datasheet for **TA372115S**

BSPRY Rabbit Polyclonal Antibody

Product data:

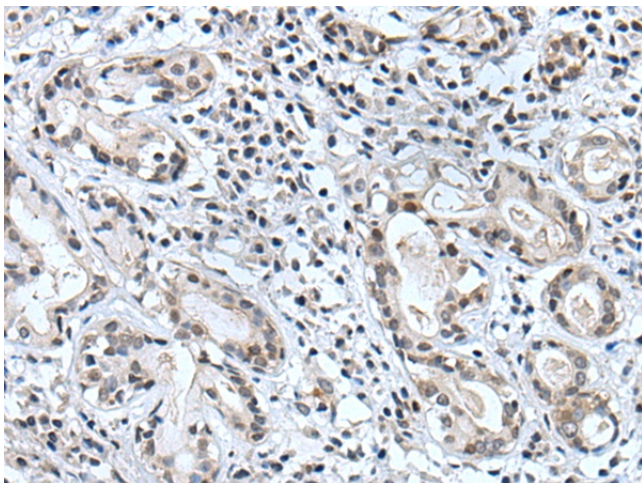
Product Type:	Primary Antibodies
Applications:	IHC
Recommended Dilution:	IHC: 20-100 Positive control: Human lung cancer Predicted cell location: Cell membrane
Reactivity:	Human
Host:	Rabbit
Isotype:	IgG
Clonality:	Polyclonal
Immunogen:	Synthetic peptide of human BSPRY
Formulation:	pH7.4 PBS, 0.05% NaN ₃ , 40% Glycerol
Concentration:	lot specific
Purification:	Antigen affinity purification
Conjugation:	Unconjugated
Storage:	Store at -20°C.
Stability:	1 year
Gene Name:	B-box and SPRY domain containing
Database Link:	Entrez Gene 54836 Human Q5W0U4

Background: BSPRY (B-box and SPRY domain containing) is a 402 amino acid protein that localizes to both the membrane and the cytoplasm and contains one B box-type zinc finger and one B30.2/SPRY domain. Existing as two alternatively spliced isoforms, BSPRY interacts with TRPV5 and TRPV6 and is thought to regulate the transport of calcium across the epithelium, probably by inhibiting the activity of TRPV proteins. The gene encoding BSPRY maps to human chromosome 9, which houses over 900 genes and comprises nearly 4% of the human genome. Hereditary hemorrhagic telangiectasia, which is characterized by harmful vascular defects, and Familial dysautonomia, are both associated with chromosome 9. Notably, chromosome 9 encompasses the largest interferon family gene cluster.

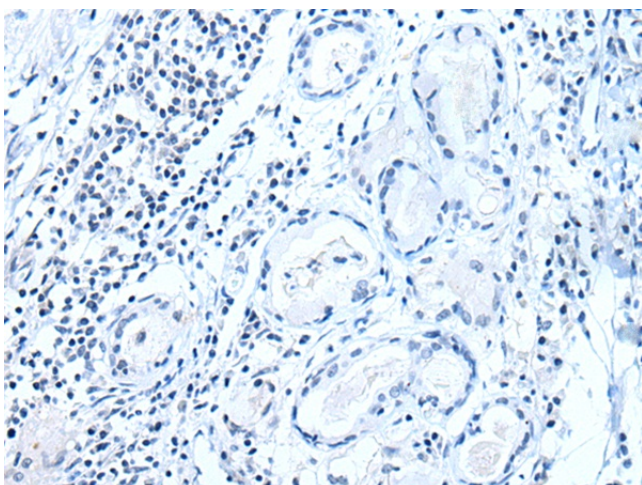

[View online »](#)

Synonyms: FLJ20150

Product images:



Immunohistochemistry of paraffin-embedded Human lung cancer tissue using [TA372115] (BSPRY Antibody) at dilution 1/35 (Original magnification: ×200)



Immunohistochemistry of paraffin-embedded Human lung cancer tissue using [TA372115] (BSPRY Antibody) at dilution 1/35, treated with synthetic peptide. (Original magnification: ×200)