

Product datasheet for **TA372111S**

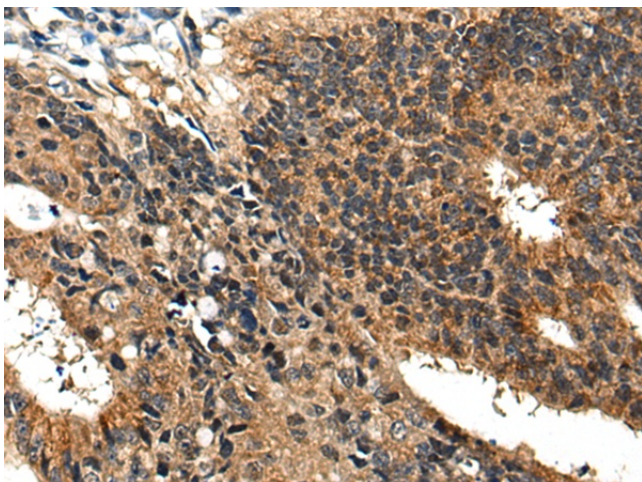
BMPER Rabbit Polyclonal Antibody

Product data:

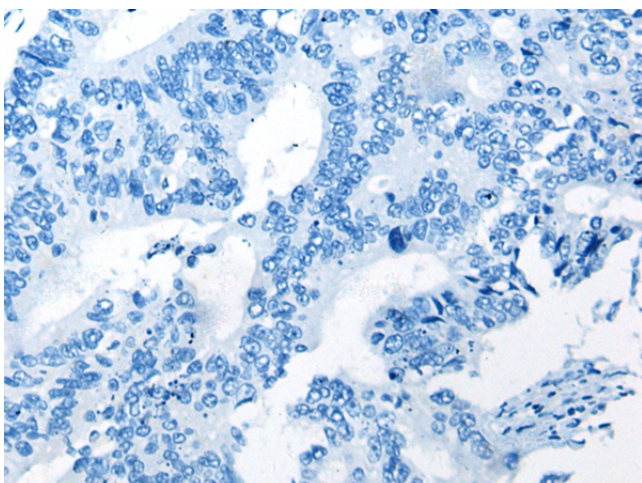
Product Type:	Primary Antibodies
Applications:	IHC
Recommended Dilution:	IHC: 30-150 Positive control: Human colorectal cancer Predicted cell location: Cytoplasm
Reactivity:	Human, Mouse
Host:	Rabbit
Isotype:	IgG
Clonality:	Polyclonal
Immunogen:	Synthetic peptide of human BMPER
Formulation:	pH7.4 PBS, 0.05% NaN ₃ , 40% Glycerol
Concentration:	lot specific
Purification:	Antigen affinity purification
Conjugation:	Unconjugated
Storage:	Store at -20°C.
Stability:	1 year
Gene Name:	BMP binding endothelial regulator
Database Link:	Entrez Gene 168667 Human Q8N8U9
Background:	This gene encodes a secreted protein that interacts with, and inhibits bone morphogenetic protein (BMP) function. It has been shown to inhibit BMP2- and BMP4-dependent osteoblast differentiation and BMP-dependent differentiation of the chondrogenic cells. Mutations in this gene are associated with a lethal skeletal disorder, diaphanospondylodysostosis.
Synonyms:	CRIM3; crossveinless-2; CV-2; CV2; hCV2; KIAA1965; OTTHUMP00000158859



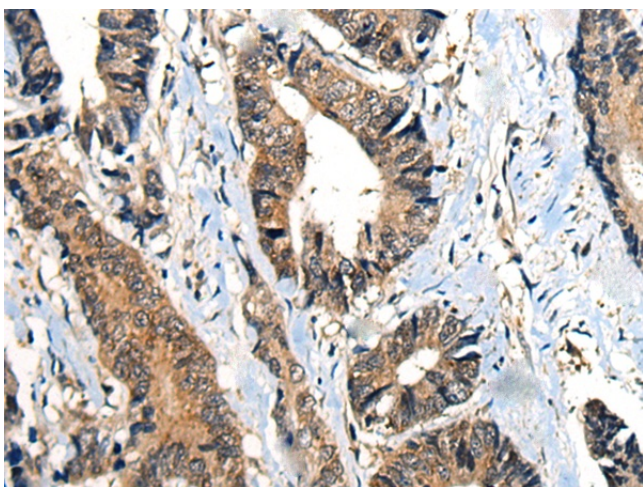
[View online »](#)

Product images:

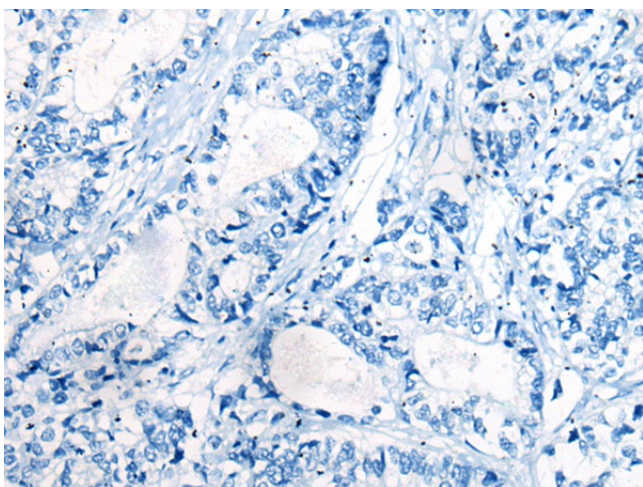
Immunohistochemistry of paraffin-embedded Human colorectal cancer tissue using [TA372111] (BMPER Antibody) at dilution 1/40 (Original magnification: $\times 200$)



Immunohistochemistry of paraffin-embedded Human colorectal cancer tissue using [TA372111] (BMPER Antibody) at dilution 1/40, treated with synthetic peptide. (Original magnification: $\times 200$)



Immunohistochemistry of paraffin-embedded Human gastric cancer tissue using [TA372111] (BMPER Antibody) at dilution 1/40 (Original magnification: x200)



Immunohistochemistry of paraffin-embedded Human gastric cancer tissue using [TA372111] (BMPER Antibody) at dilution 1/40, treated with synthetic peptide. (Original magnification: x200)