

Product datasheet for **TA372102**

BHLHA15 Rabbit Polyclonal Antibody

Product data:

Product Type:	Primary Antibodies
Applications:	IHC, WB
Recommended Dilution:	WB: 200-1000 WB positive control: Human muscle tissue□Human spleen tissue□Mouse Pancreas tissue□Human pancreas tissue and Mouse liver tissue lysates IHC: 20-100 Positive control: Human colorectal cancer Predicted cell location: Nucleus
Reactivity:	Human, Mouse, Rat
Host:	Rabbit
Isotype:	IgG
Clonality:	Polyclonal
Immunogen:	Synthetic peptide of human BHLHA15
Formulation:	pH7.4 PBS, 0.05% NaN ₃ , 40% Glycerol
Concentration:	lot specific
Purification:	Antigen affinity purification
Conjugation:	Unconjugated
Storage:	Store at -20°C.
Stability:	1 year
Predicted Protein Size:	21 kDa
Gene Name:	basic helix-loop-helix family member a15
Database Link:	Entrez Gene 168620 Human Q7RTS1



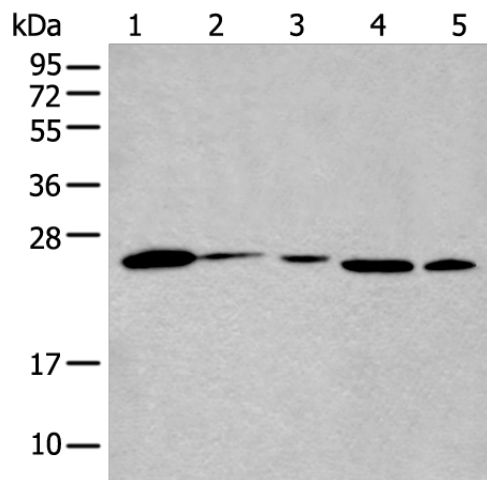
[View online »](#)

Background:

MIST1 (muscle, intestine and stomach expression 1), also known as BHLHB8 (basic helix-loop-helix domain containing, class B, 8), is a 189 amino acid nuclear protein expressed in liver, brain, skeletal muscle and spleen. MIST1 contains a basic helix-loop-helix (bHLH) domain and belongs to the bHLH family of transcription factors. Members of this family bind to the E-box motifs present in the promoter or enhancer regions of a variety of developmentally regulated genes and function as either transcriptional activators or transcriptional repressors. MIST1 is capable of binding to E-box motifs as a homodimer or a heterodimer with E-proteins (E12 and E47) and is believed to play a role regulating the transcriptional activity of MyoD, a protein involved in the regulation of muscle cell development. More specifically, MIST1 functions as a repressor of MyoD activity, ensuring that myoblast populations do not differentiate. In addition, MIST1 is expressed in mammary epithelial cells and is essential for the regulation of mammary gland development.

Synonyms:

BHLHB8; MIST-1; MIST1

Product images:

Gel: 12%SDS-PAGE

Lysate: 40 µg

Lane 1-5: Human muscle tissue

Human spleen tissue

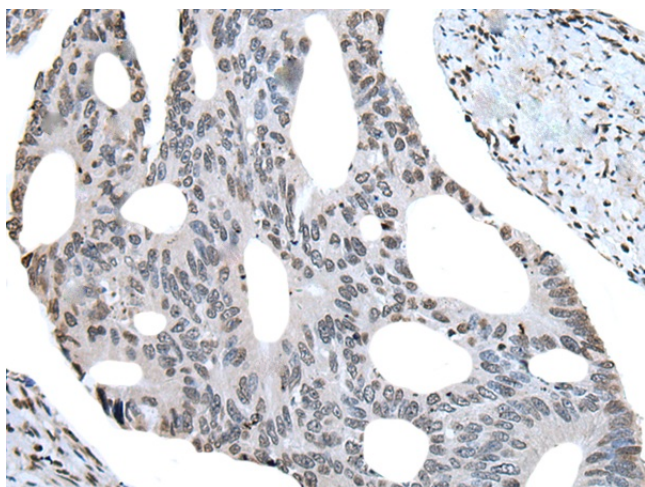
Mouse Pancreas tissue

Human pancreas tissue and Mouse liver tissue lysates

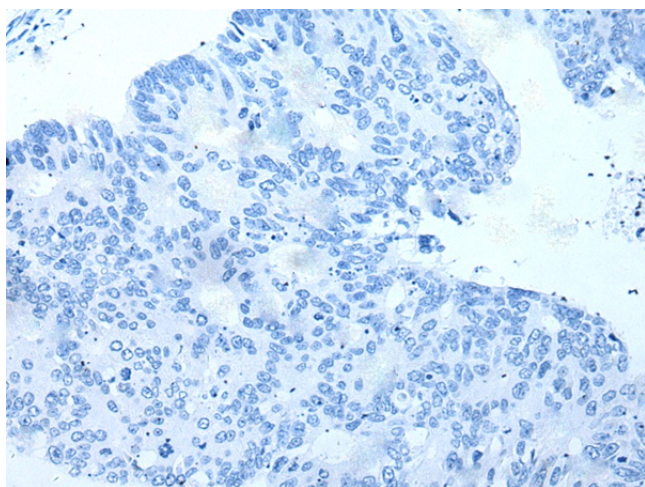
Primary antibody: TA372102 (BHLHA15 Antibody) at dilution 1/250

Secondary antibody: Goat anti rabbit IgG at 1/8000 dilution

Exposure time: 1 minute



Immunohistochemistry of paraffin-embedded Human colorectal cancer tissue using TA372102 (BHLHA15 Antibody) at dilution 1/25 (Original magnification: $\times 200$)



Immunohistochemistry of paraffin-embedded Human colorectal cancer tissue using TA372102 (BHLHA15 Antibody) at dilution 1/25, treated with synthetic peptide. (Original magnification: $\times 200$)