

## Product datasheet for **TA372100**

### beta II Tubulin (TUBB2A) Rabbit Polyclonal Antibody

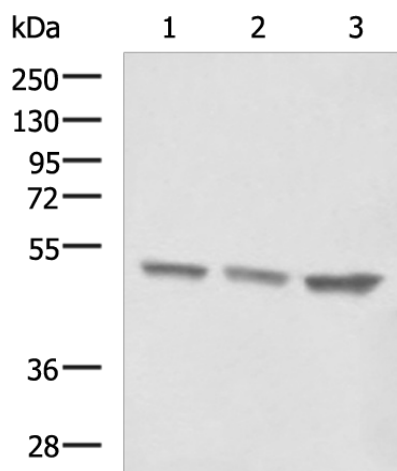
#### Product data:

Product Type:	Primary Antibodies
Applications:	IHC, WB
Recommended Dilution:	WB: 500-2000 WB positive control: NIH/3T3, Jurkat, 293T cell lysates IHC: 25-50 Positive control: Human tonsil Predicted cell location: Cytoplasm
Reactivity:	Human, Mouse, Rat
Host:	Rabbit
Isotype:	IgG
Clonality:	Polyclonal
Immunogen:	Synthetic peptide of human TUBB2A
Formulation:	pH7.4 PBS, 0.05% NaN <sub>3</sub> , 40% Glycerol
Concentration:	lot specific
Purification:	Antigen affinity purification
Conjugation:	Unconjugated
Storage:	Store at -20°C.
Stability:	1 year
Predicted Protein Size:	50 kDa
Gene Name:	tubulin beta 2A class IIa
Database Link:	<a href="#">Entrez Gene 7280 Human Q13885</a>
Background:	Microtubules, key participants in processes such as mitosis and intracellular transport, are composed of heterodimers of alpha- and beta-tubulins. The protein encoded by this gene is a beta-tubulin. Defects in this gene are associated with complex cortical dysplasia with other brain malformations-5. Two transcript variants encoding distinct isoforms have been found for this gene.
Synonyms:	dj40E16.7; TUBB; TUBB2; TUBB2B

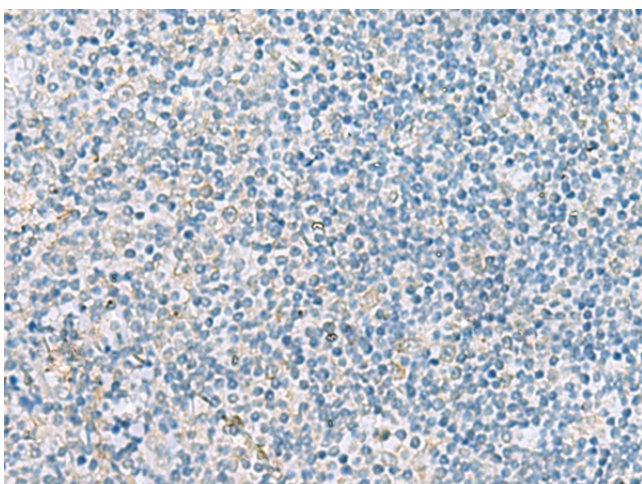


[View online »](#)

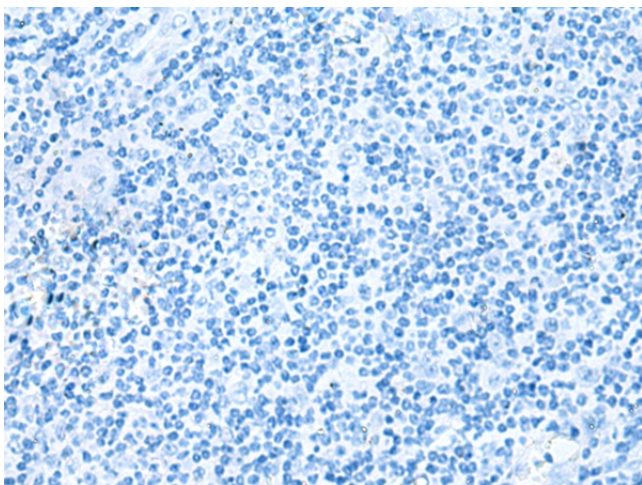
## Product images:



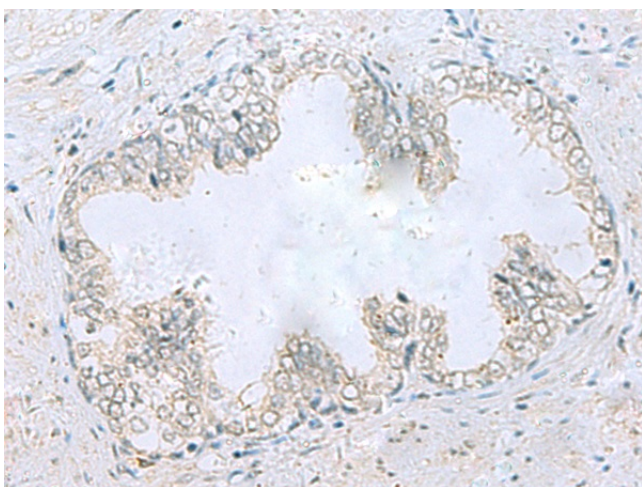
Gel: 8%SDS-PAGE  
Lysate: 40  $\mu$ g  
Lane 1-3: NIH/3T3  
Jurkat  
293T cell lysates  
Primary antibody: TA372100 (TUBB2A Antibody)  
at dilution 1/750  
Secondary antibody: Goat anti rabbit IgG at  
1/5000 dilution  
Exposure time: 10 seconds



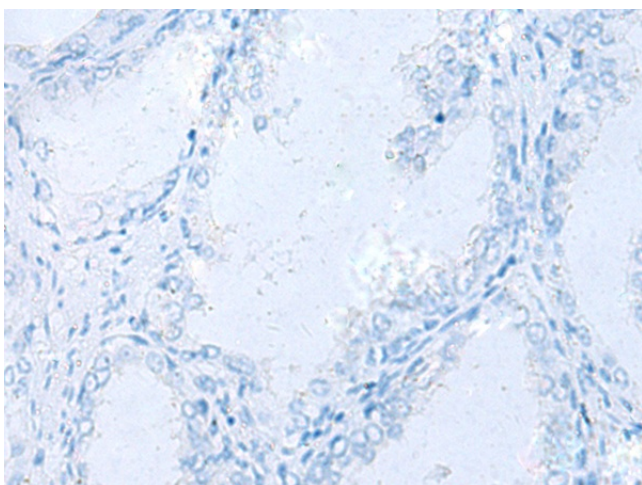
Immunohistochemistry of paraffin-embedded  
Human tonsil tissue using TA372100 (TUBB2A  
Antibody) at dilution 1/30 (Original magnification:  
 $\times$ 200)



Immunohistochemistry of paraffin-embedded Human tonsil tissue using TA372100 (TUBB2A Antibody) at dilution 1/30, treated with synthetic peptide. (Original magnification:  $\times 200$ )



Immunohistochemistry of paraffin-embedded Human prostate cancer tissue using TA372100 (TUBB2A Antibody) at dilution 1/30 (Original magnification:  $\times 200$ )



Immunohistochemistry of paraffin-embedded Human prostate cancer tissue using TA372100 (TUBB2A Antibody) at dilution 1/30, treated with synthetic peptide. (Original magnification:  $\times 200$ )