

Product datasheet for **TA372099**

BCNP (FAM129C) Rabbit Polyclonal Antibody

Product data:

Product Type:	Primary Antibodies
Applications:	IHC
Recommended Dilution:	IHC: 20-100 Positive control: Human liver cancer Predicted cell location: Cytoplasm and Cell membrane
Reactivity:	Human
Host:	Rabbit
Isotype:	IgG
Clonality:	Polyclonal
Immunogen:	Synthetic peptide of human NIBAN3
Formulation:	pH7.4 PBS, 0.05% NaN ₃ , 40% Glycerol
Concentration:	lot specific
Purification:	Antigen affinity purification
Conjugation:	Unconjugated
Storage:	Store at -20°C.
Stability:	1 year
Gene Name:	family with sequence similarity 129 member C
Database Link:	Entrez Gene 199786 Human Q86XR2



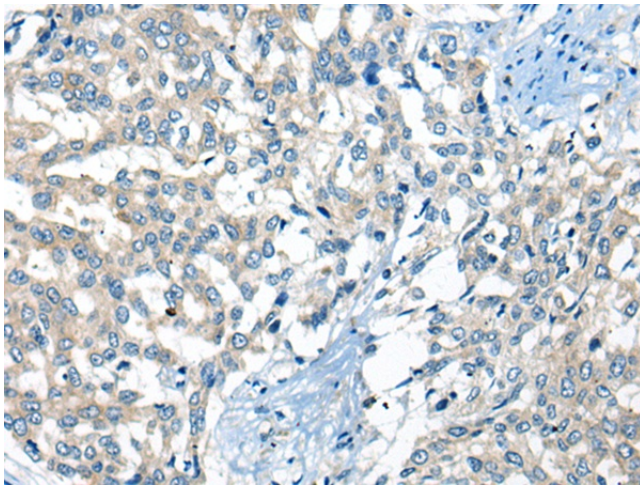
[View online »](#)

Background:

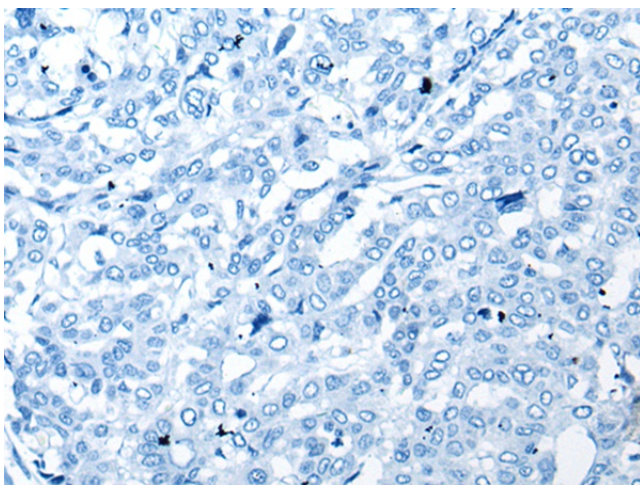
FAM129C, also known as BCNP1, BCNP1 is a 697 amino acid protein that belongs to the Niban family. Specifically expressed in B-lymphocytes, BCNP1 exists as five alternatively spliced isoforms. BCNP1 is highly expressed in B-cell malignancies, lymph node and spleen, with little to no expression in other tissues, including other hemopoietic tissues. The gene encoding the BCNP1 protein maps to human chromosome 19p13.11. Consisting of around 63 million bases with over 1,400 genes, chromosome 19 makes up over 2% of human genomic DNA. Chromosome 19 includes a diversity of interesting genes and is recognized for having the greatest gene density of the human chromosomes. It is the genetic home for a number of immunoglobulin superfamily members including the killer cell and leukocyte Ig-like receptors, a number of ICAMs, the CEACAM and PSG family, and Fc α receptors. Key genes for eye color and hair color also map to chromosome 19.

Synonyms:

BCNP1; FLJ39802

Product images:

Immunohistochemistry of paraffin-embedded Human liver cancer tissue using TA372099 (NIBAN3 Antibody) at dilution 1/30 (Original magnification: $\times 200$)



Immunohistochemistry of paraffin-embedded Human liver cancer tissue using TA372099 (NIBAN3 Antibody) at dilution 1/30, treated with synthetic peptide. (Original magnification: $\times 200$)