

Product datasheet for **TA372095S**

BAGE2 Rabbit Polyclonal Antibody

Product data:

Product Type:	Primary Antibodies
Applications:	IHC
Recommended Dilution:	IHC: 25-100 Positive control: Human tonsil Predicted cell location: Secreted
Reactivity:	Human
Host:	Rabbit
Isotype:	IgG
Clonality:	Polyclonal
Immunogen:	Synthetic peptide of human BAGE2
Formulation:	pH7.4 PBS, 0.05% NaN ₃ , 40% Glycerol
Concentration:	lot specific
Purification:	Antigen affinity purification
Conjugation:	Unconjugated
Storage:	Store at -20°C.
Stability:	1 year
Gene Name:	B melanoma antigen family member 2
Database Link:	Entrez Gene 85319 Human Q86Y30

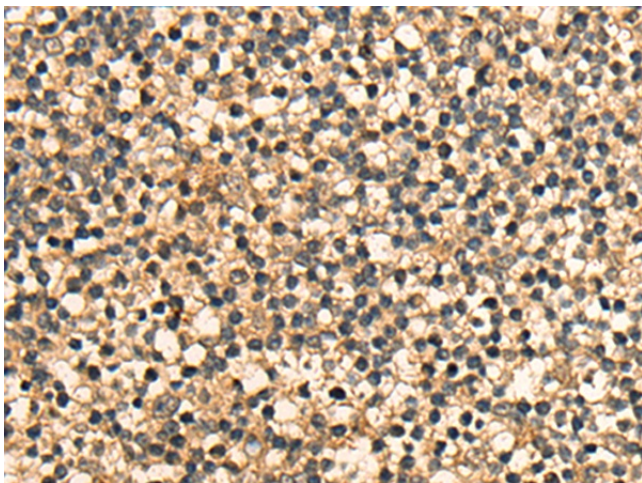
Background: Members of the BAGE gene family encode antigens that are recognized by cytotoxic T lymphocytes and are also known as CT (cancer/testis) antigens. Generated by juxtacentromeric shuffling of the MLL3 gene, the ancestral BAGE gene was expanded by acrocentric exchanges and/or juxtacentromeric movements. Generally, BAGE proteins are silent in all normal tissues with the exception of testis. BAGE2(B melanoma antigen 2), also known as Cancer/testis antigen 2.2, is 109 amino acid secreted proteins that is expressed in 22% of melanomas, lung and bladder carcinomas, and is also expressed in normal testis tissue. Like the genes encoding MAGE proteins, BAGE genes are most likely silenced by DNA methylation and/or chromatin compaction in normal tissues other than testis.



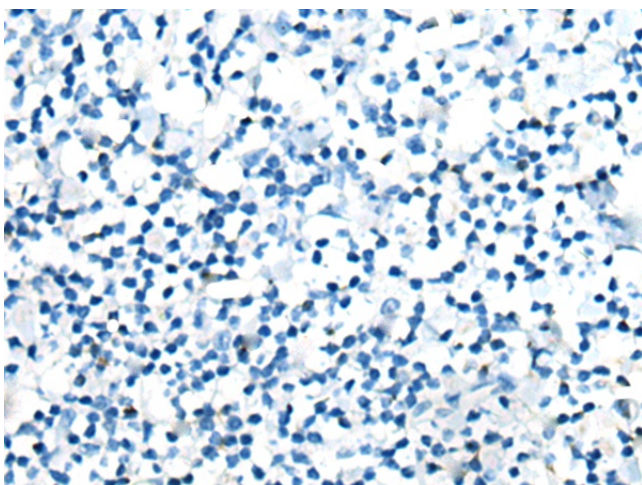
[View online »](#)

Synonyms: CT2.2

Product images:



Immunohistochemistry of paraffin-embedded Human tonsil tissue using [TA372095] (BAGE2 Antibody) at dilution 1/25 (Original magnification: ×200)



Immunohistochemistry of paraffin-embedded Human tonsil tissue using [TA372095] (BAGE2 Antibody) at dilution 1/25, treated with synthetic peptide. (Original magnification: ×200)