

## Product datasheet for **TA372092**

### **B3GNT3 Rabbit Polyclonal Antibody**

#### **Product data:**

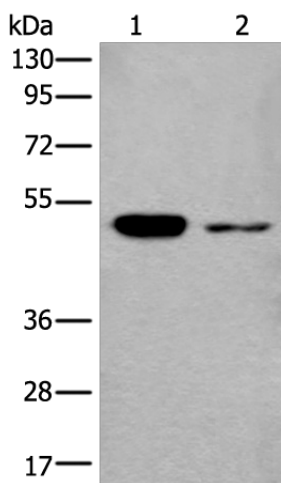
<b>Product Type:</b>	Primary Antibodies
<b>Applications:</b>	IHC, WB
<b>Recommended Dilution:</b>	WB: 200-1000 WB positive control: Hela and 293T cell lysates IHC: 25-100 Positive control: Human colorectal cancer Predicted cell location: Cytoplasm
<b>Reactivity:</b>	Human, Mouse
<b>Host:</b>	Rabbit
<b>Isotype:</b>	IgG
<b>Clonality:</b>	Polyclonal
<b>Immunogen:</b>	Synthetic peptide of human B3GNT3
<b>Formulation:</b>	pH7.4 PBS, 0.05% NaN <sub>3</sub> , 40% Glycerol
<b>Concentration:</b>	lot specific
<b>Purification:</b>	Antigen affinity purification
<b>Conjugation:</b>	Unconjugated
<b>Storage:</b>	Store at -20°C.
<b>Stability:</b>	1 year
<b>Predicted Protein Size:</b>	43 kDa
<b>Gene Name:</b>	UDP-GlcNAc:betaGal beta-1,3-N-acetylglucosaminyltransferase 3
<b>Database Link:</b>	<a href="#">Entrez Gene 10331 Human Q9Y2A9</a>
<b>Background:</b>	This gene encodes a member of the beta-1,3-N-acetylglucosaminyltransferase family. This enzyme is a type II transmembrane protein and contains a signal anchor that is not cleaved. It prefers the substrates of lacto-N-tetraose and lacto-N-neotetraose, and is involved in the biosynthesis of poly-N-acetyllactosamine chains and the biosynthesis of the backbone structure of dimeric sialyl Lewis a. It plays dominant roles in L-selectin ligand biosynthesis, lymphocyte homing and lymphocyte trafficking.



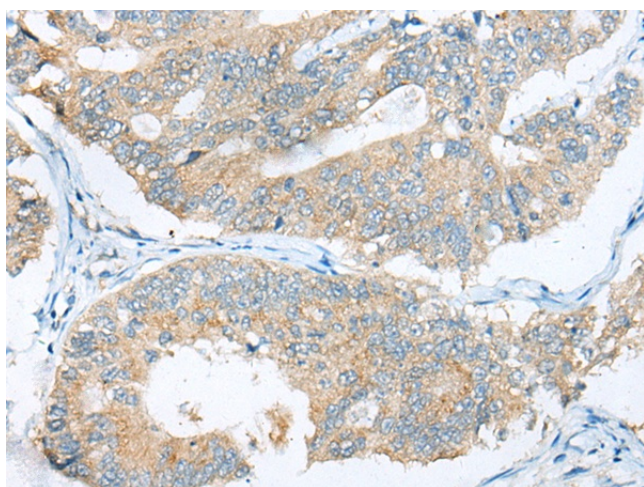
[View online »](#)

**Synonyms:** B3GAL-T8; B3GALT8; B3GN-T3; B3GNT-3; Beta-3-Gx-T8; Beta3Gal-T8; Beta3Gn-T3; BGnT-3; Core1-beta3GlcNAcT; HP10328; TMEM3

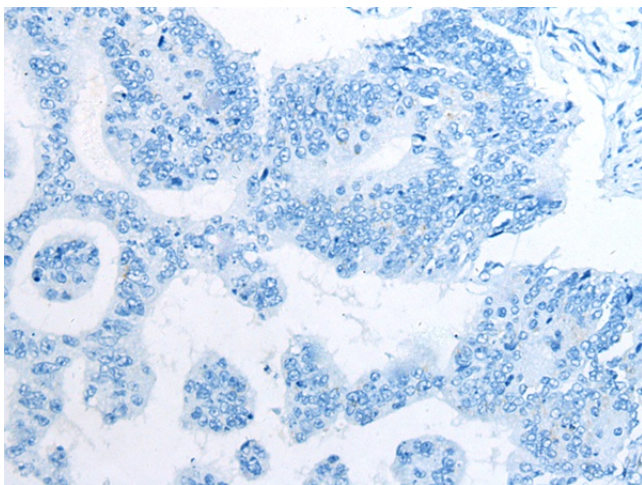
**Product images:**



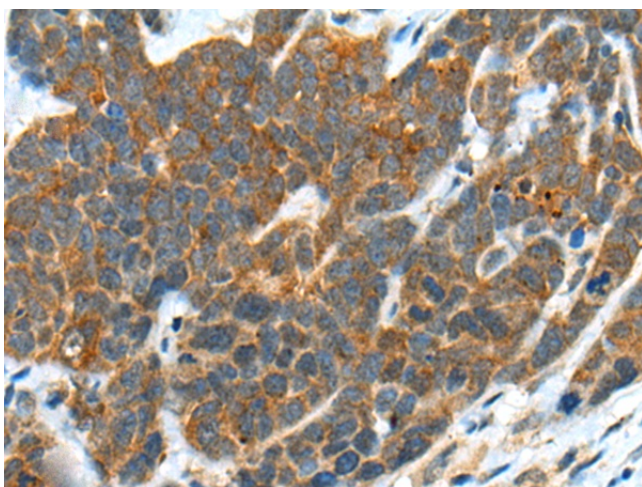
Gel: 8%SDS-PAGE  
 Lysate: 40 µg  
 Lane 1-2: HeLa and 293T cell lysates  
 Primary antibody: TA372092 (B3GNT3 Antibody) at dilution 1/250  
 Secondary antibody: Goat anti rabbit IgG at 1/8000 dilution  
 Exposure time: 30 seconds



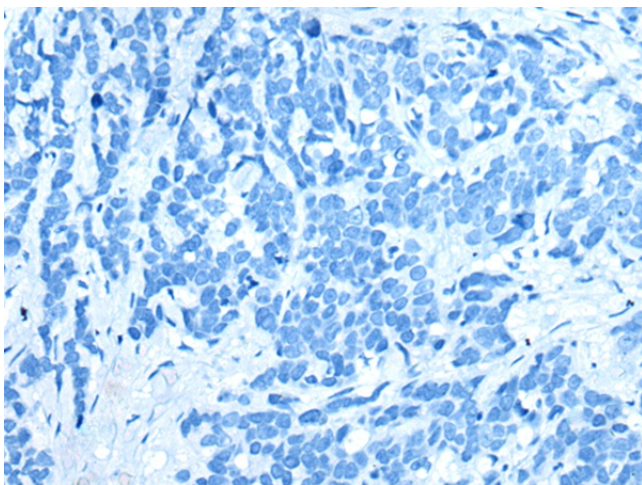
Immunohistochemistry of paraffin-embedded Human colorectal cancer tissue using TA372092 (B3GNT3 Antibody) at dilution 1/30 (Original magnification: ×200)



Immunohistochemistry of paraffin-embedded Human colorectal cancer tissue using TA372092 (B3GNT3 Antibody) at dilution 1/30, treated with synthetic peptide. (Original magnification: ×200)



Immunohistochemistry of paraffin-embedded Human thyroid cancer tissue using TA372092 (B3GNT3 Antibody) at dilution 1/30 (Original magnification: ×200)



Immunohistochemistry of paraffin-embedded Human thyroid cancer tissue using TA372092 (B3GNT3 Antibody) at dilution 1/30, treated with synthetic peptide. (Original magnification: ×200)