

## Product datasheet for **TA372083**

### UTP18 Rabbit Polyclonal Antibody

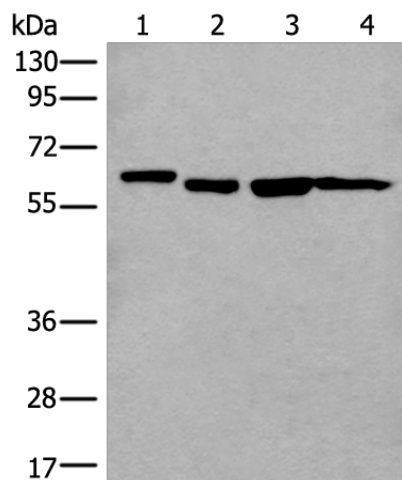
#### Product data:

Product Type:	Primary Antibodies
Applications:	IHC, WB
Recommended Dilution:	WB: 200-1000 WB positive control: 293T□Hela□Raji and A172 cell lysates IHC: 20-100 Positive control: Human gastric cancer Predicted cell location: Nucleus
Reactivity:	Human, Mouse
Host:	Rabbit
Isotype:	IgG
Clonality:	Polyclonal
Immunogen:	Synthetic peptide of human UTP18
Formulation:	pH7.4 PBS, 0.05% NaN <sub>3</sub> , 40% Glycerol
Concentration:	lot specific
Purification:	Antigen affinity purification
Conjugation:	Unconjugated
Storage:	Store at -20°C.
Stability:	1 year
Predicted Protein Size:	62 kDa
Gene Name:	UTP18, small subunit processome component
Database Link:	<a href="#">Entrez Gene 51096 Human Q9Y5J1</a>
Background:	Involved in nucleolar processing of pre-18S ribosomal RNA.
Synonyms:	CGI-48; WDR50



[View online »](#)

## Product images:



Gel: 8%SDS-PAGE

Lysate: 40  $\mu$ g

Lane 1-4: 293T

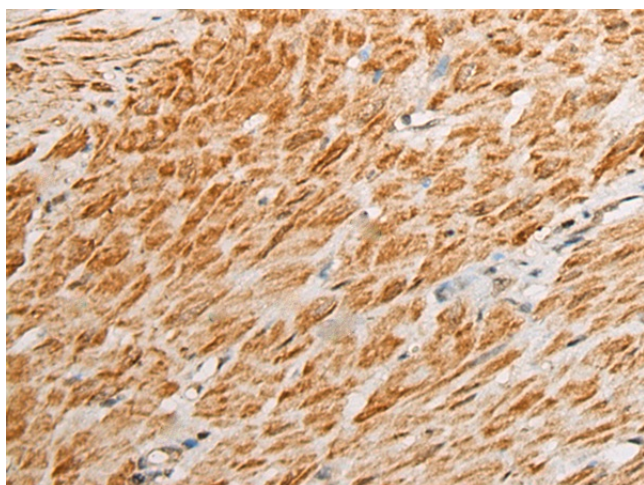
HeLa

Raji and A172 cell lysates

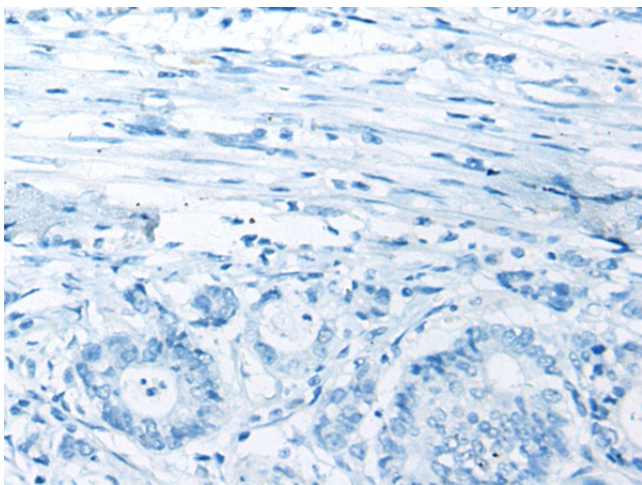
Primary antibody: TA372083 (UTP18 Antibody) at dilution 1/200

Secondary antibody: Goat anti rabbit IgG at 1/8000 dilution

Exposure time: 1 minute



Immunohistochemistry of paraffin-embedded Human gastric cancer tissue using TA372083 (UTP18 Antibody) at dilution 1/25 (Original magnification:  $\times$ 200)



Immunohistochemistry of paraffin-embedded Human gastric cancer tissue using TA372083 (UTP18 Antibody) at dilution 1/25, treated with synthetic peptide. (Original magnification: ×200)