

Product datasheet for **TA372071S**

UGGT (UGGT1) Rabbit Polyclonal Antibody

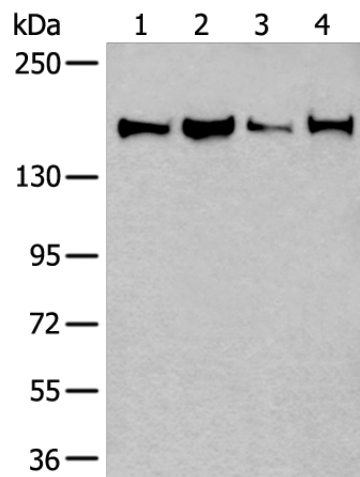
Product data:

Product Type:	Primary Antibodies
Applications:	IHC, WB
Recommended Dilution:	WB: 200-1000 WB positive control: 231□A172□Jurkat and HEPG2 cell lysates IHC: 20-100 Positive control: Human colorectal cancer Predicted cell location: Cytoplasm
Reactivity:	Human
Host:	Rabbit
Isotype:	IgG
Clonality:	Polyclonal
Immunogen:	Synthetic peptide of human UGGT1
Formulation:	pH7.4 PBS, 0.05% NaN ₃ , 40% Glycerol
Concentration:	lot specific
Purification:	Antigen affinity purification
Conjugation:	Unconjugated
Storage:	Store at -20°C.
Stability:	1 year
Predicted Protein Size:	177 kDa
Gene Name:	UDP-glucose glycoprotein glucosyltransferase 1
Database Link:	Entrez Gene 56886 Human Q9NYU2
Background:	UDP-glucose:glycoprotein glucosyltransferase (UGT) is a soluble protein of the endoplasmic reticulum (ER) that selectively reglycosylates unfolded glycoproteins, thus providing quality control for protein transport out of the ER.
Synonyms:	0910001L17Rik; A930007H10Rik; AA589501; AI414429; AI448372; C820010P03Rik; GT; rUGT1; Ugcgl1; Ugggt; UGT1

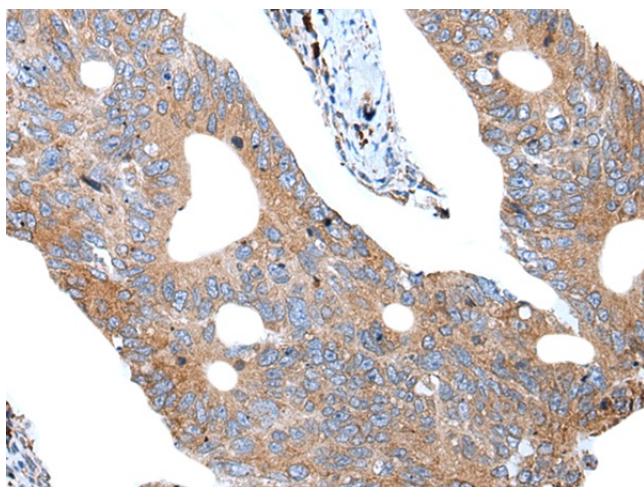


[View online »](#)

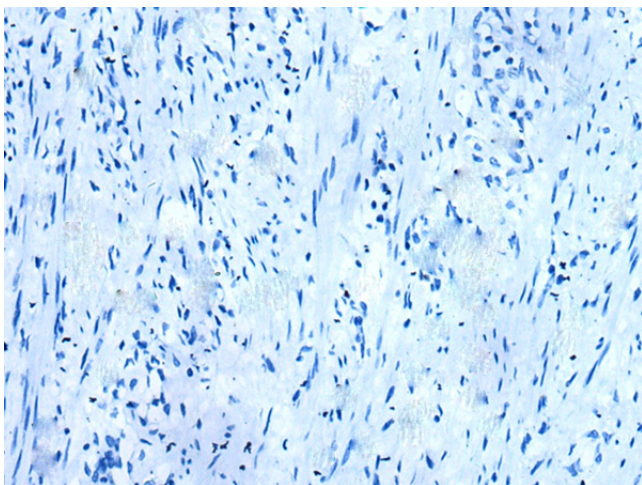
Product images:



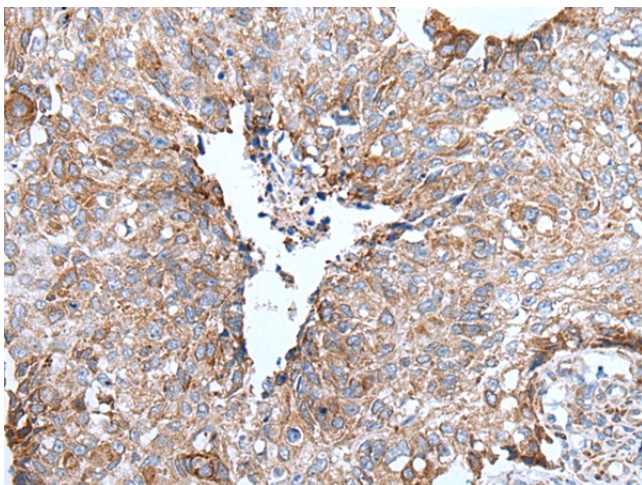
Gel: 6%SDS-PAGE
Lysate: 40 μ g
Lane 1-4: 231
A172
Jurkat and HEPG2 cell lysates
Primary antibody: [TA372071] (UGGT1 Antibody)
at dilution 1/200
Secondary antibody: Goat anti rabbit IgG at
1/8000 dilution
Exposure time: 1 minute



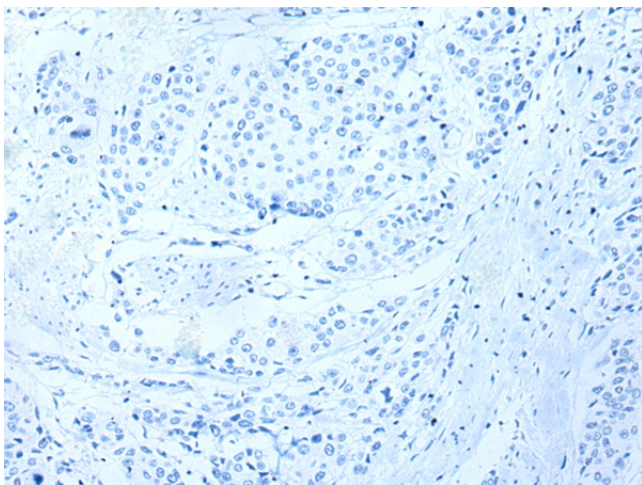
Immunohistochemistry of paraffin-embedded
Human colorectal cancer tissue using [TA372071]
(UGGT1 Antibody) at dilution 1/20 (Original
magnification: $\times 200$)



Immunohistochemistry of paraffin-embedded Human colorectal cancer tissue using [TA372071] (UGGT1 Antibody) at dilution 1/20, treated with synthetic peptide. (Original magnification: $\times 200$)



Immunohistochemistry of paraffin-embedded Human lung cancer tissue using [TA372071] (UGGT1 Antibody) at dilution 1/20 (Original magnification: $\times 200$)



Immunohistochemistry of paraffin-embedded Human lung cancer tissue using [TA372071] (UGGT1 Antibody) at dilution 1/20, treated with synthetic peptide. (Original magnification: $\times 200$)