

Product datasheet for **TA372065S**

UBQLN2 Rabbit Polyclonal Antibody

Product data:

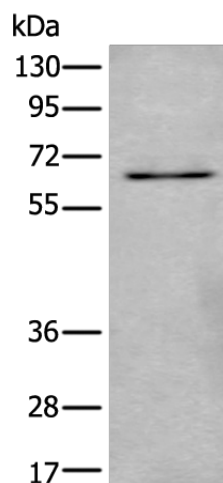
| | |
|-------------------------|--|
| Product Type: | Primary Antibodies |
| Applications: | IHC, WB |
| Recommended Dilution: | WB: 500-2000 WB positive control: SKOV3 cell lysate IHC: 30-150 Positive control: Human thyroid cancer Predicted cell location: Cytoplasm and Nucleus |
| Reactivity: | Human, Mouse |
| Host: | Rabbit |
| Isotype: | IgG |
| Clonality: | Polyclonal |
| Immunogen: | Synthetic peptide of human UBQLN2 |
| Formulation: | pH7.4 PBS, 0.05% NaN ₃ , 40% Glycerol |
| Concentration: | lot specific |
| Purification: | Antigen affinity purification |
| Conjugation: | Unconjugated |
| Storage: | Store at -20°C. |
| Stability: | 1 year |
| Predicted Protein Size: | 66 kDa |
| Gene Name: | ubiquilin 2 |
| Database Link: | Entrez Gene 29978 Human Q9UHD9 |
| Background: | This gene encodes an ubiquitin-like protein (ubiquilin) that shares high degree of similarity with related products in yeast, rat and frog. Ubiquilins contain a N-terminal ubiquitin-like domain and a C-terminal ubiquitin-associated domain. They physically associate with both proteasomes and ubiquitin ligases; and thus, are thought to functionally link the ubiquitination machinery to the proteasome to affect in vivo protein degradation. This ubiquilin has also been shown to bind the ATPase domain of the Hsp70-like Stch protein. |



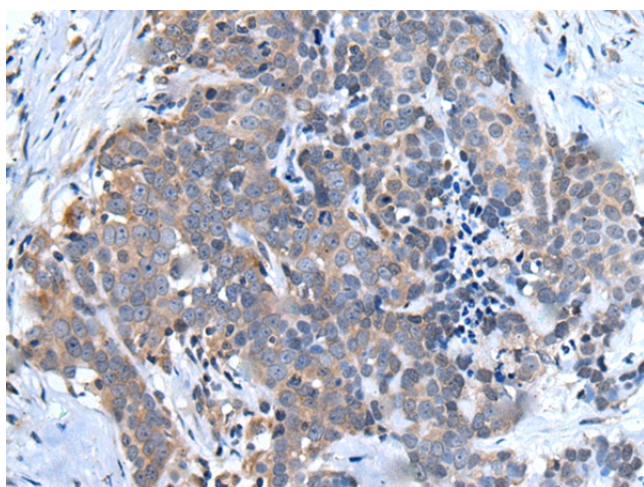
[View online »](#)

Synonyms: Chap1; CHAP1/DSK2; Dsk2; FLJ10167; FLJ56541; hPLIC-2; HRIHFB2157; LIC-2; N4BP4; PLIC-2; PLIC2; RIHFB2157

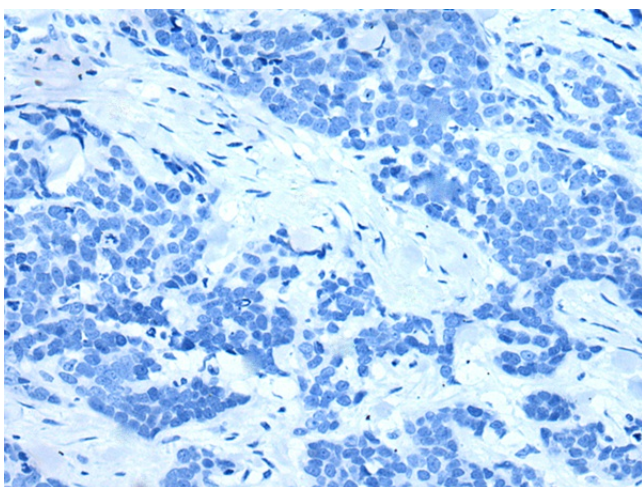
Product images:



Gel: 8%SDS-PAGE
Lysate: 40 μ g
Lane: SKOV3 cell lysate
Primary antibody: [TA372065] (UBQLN2 Antibody) at dilution 1/500
Secondary antibody: Goat anti rabbit IgG at 1/8000 dilution
Exposure time: 1 minute



Immunohistochemistry of paraffin-embedded Human thyroid cancer tissue using [TA372065] (UBQLN2 Antibody) at dilution 1/45 (Original magnification: \times 200)



Immunohistochemistry of paraffin-embedded Human thyroid cancer tissue using [TA372065] (UBQLN2 Antibody) at dilution 1/45, treated with synthetic peptide. (Original magnification: ×200)