

## Product datasheet for **TA372057S**

### VPS35 Rabbit Polyclonal Antibody

#### Product data:

Product Type:	Primary Antibodies
Applications:	IHC, WB
Recommended Dilution:	WB: 500-2000 WB positive control: Hela,HEPG2,Raji,NIH/3T3 and A549 cell lysates,Human cerebella tissue and Mouse brain tissue lysates IHC: 20-100 Positive control: Human colorectal cancer Predicted cell location: Cytoplasm or Nucleus
Reactivity:	Human, Mouse
Host:	Rabbit
Isotype:	IgG
Clonality:	Polyclonal
Immunogen:	Synthetic peptide of human VPS35
Formulation:	pH7.4 PBS, 0.05% NaN <sub>3</sub> , 40% Glycerol
Concentration:	lot specific
Purification:	Antigen affinity purification
Conjugation:	Unconjugated
Storage:	Store at -20°C.
Stability:	1 year
Predicted Protein Size:	92 kDa
Gene Name:	VPS35 retromer complex component
Database Link:	<a href="#">Entrez Gene 55737 Human Q96QK1</a>



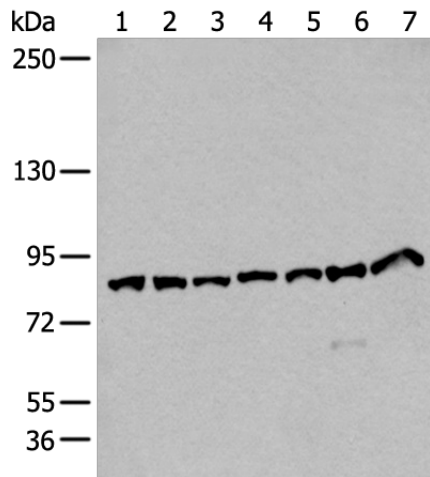
[View online »](#)

**Background:**

This gene belongs to a group of vacuolar protein sorting (VPS) genes. The encoded protein is a component of a large multimeric complex, termed the retromer complex, involved in retrograde transport of proteins from endosomes to the trans-Golgi network. The close structural similarity between the yeast and human proteins that make up this complex suggests a similarity in function. Expression studies in yeast and mammalian cells indicate that this protein interacts directly with VPS35, which serves as the core of the retromer complex.

**Synonyms:**

DKFZp434E1211; DKFZp434P1672; FLJ10752; FLJ13588; FLJ20388; hVPS35; MEM3

**Product images:**


Gel: 6%SDS-PAGE

Lysate: 40 µg

Lane 1-7: HeLa

HEPG2

Raji

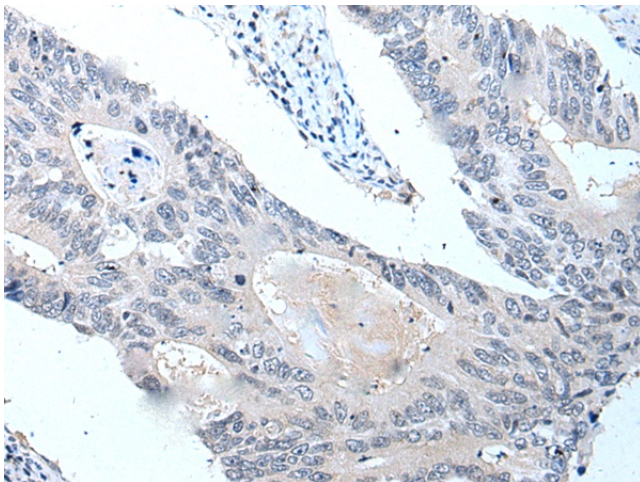
NIH/3T3 and A549 cell lysates

Human cerebella tissue and Mouse brain tissue lysates

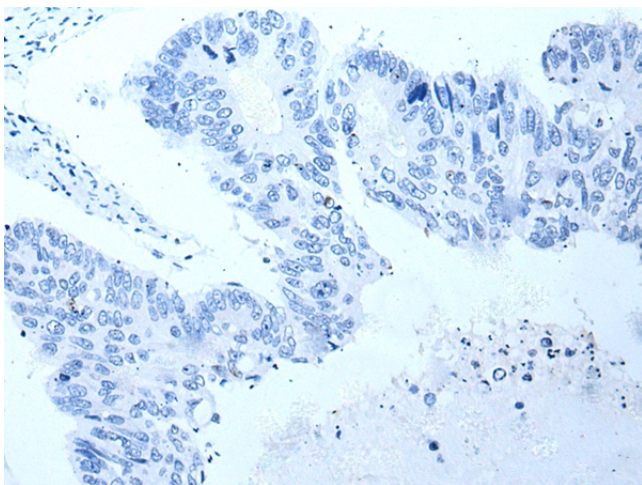
Primary antibody: [TA372057] (VPS35 Antibody) at dilution 1/250

Secondary antibody: Goat anti rabbit IgG at 1/8000 dilution

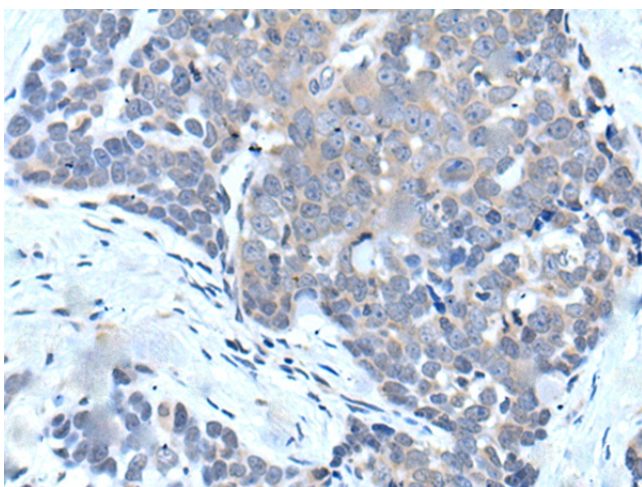
Exposure time: 1 minute



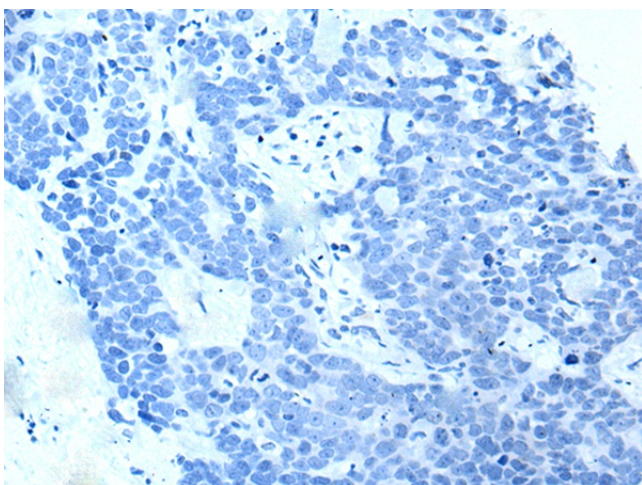
Immunohistochemistry of paraffin-embedded Human colorectal cancer tissue using [TA372057] (VPS35 Antibody) at dilution 1/25 (Original magnification: ×200)



Immunohistochemistry of paraffin-embedded Human colorectal cancer tissue using [TA372057] (VPS35 Antibody) at dilution 1/25, treated with synthetic peptide. (Original magnification: ×200)



Immunohistochemistry of paraffin-embedded Human thyroid cancer tissue using [TA372057] (VPS35 Antibody) at dilution 1/25 (Original magnification: ×200)



Immunohistochemistry of paraffin-embedded Human thyroid cancer tissue using [TA372057] (VPS35 Antibody) at dilution 1/25, treated with synthetic peptide. (Original magnification: ×200)