

Product datasheet for **TA372057**

VPS35 Rabbit Polyclonal Antibody

Product data:

Product Type:	Primary Antibodies
Applications:	IHC, WB
Recommended Dilution:	WB: 500-2000 WB positive control: HeLa, HEPG2, Raji, NIH/3T3 and A549 cell lysates, Human cerebella tissue and Mouse brain tissue lysates IHC: 20-100 Positive control: Human colorectal cancer Predicted cell location: Cytoplasm or Nucleus
Reactivity:	Human, Mouse
Host:	Rabbit
Isotype:	IgG
Clonality:	Polyclonal
Immunogen:	Synthetic peptide of human VPS35
Formulation:	pH7.4 PBS, 0.05% NaN ₃ , 40% Glycerol
Concentration:	lot specific
Purification:	Antigen affinity purification
Conjugation:	Unconjugated
Storage:	Store at -20°C.
Stability:	1 year
Predicted Protein Size:	92 kDa
Gene Name:	VPS35 retromer complex component
Database Link:	Entrez Gene 55737 Human Q96QK1



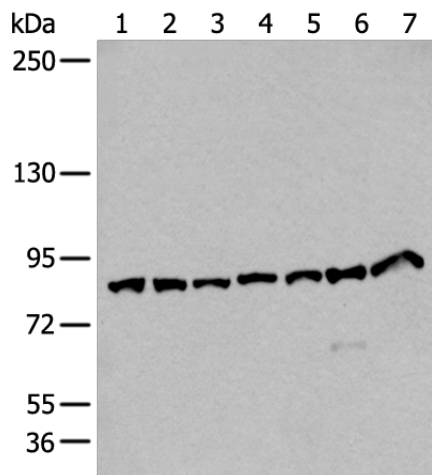
[View online »](#)

Background:

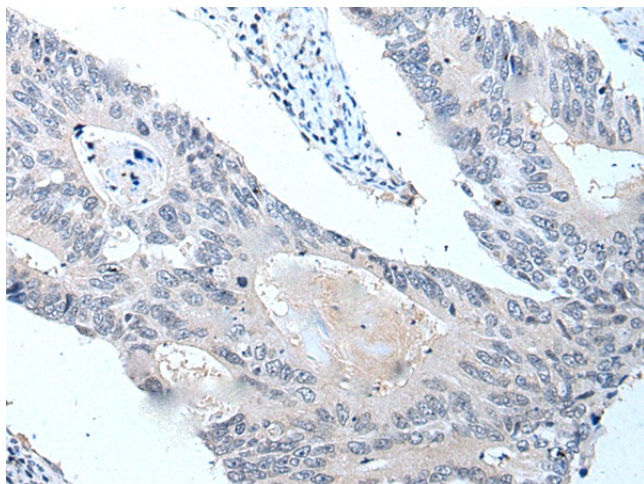
This gene belongs to a group of vacuolar protein sorting (VPS) genes. The encoded protein is a component of a large multimeric complex, termed the retromer complex, involved in retrograde transport of proteins from endosomes to the trans-Golgi network. The close structural similarity between the yeast and human proteins that make up this complex suggests a similarity in function. Expression studies in yeast and mammalian cells indicate that this protein interacts directly with VPS35, which serves as the core of the retromer complex.

Synonyms:

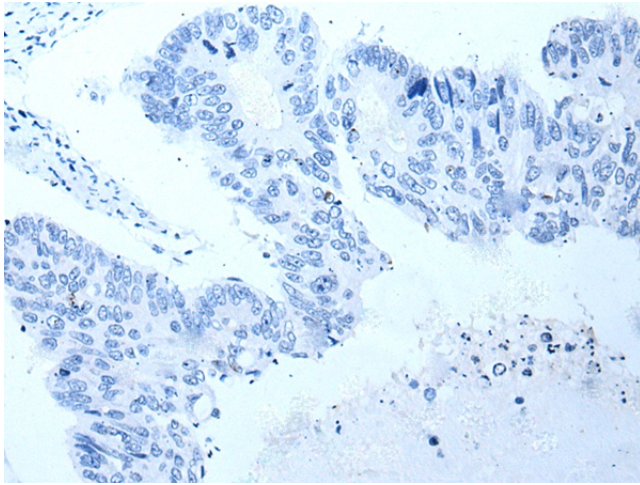
DKFZp434E1211; DKFZp434P1672; FLJ10752; FLJ13588; FLJ20388; hVPS35; MEM3

Product images:


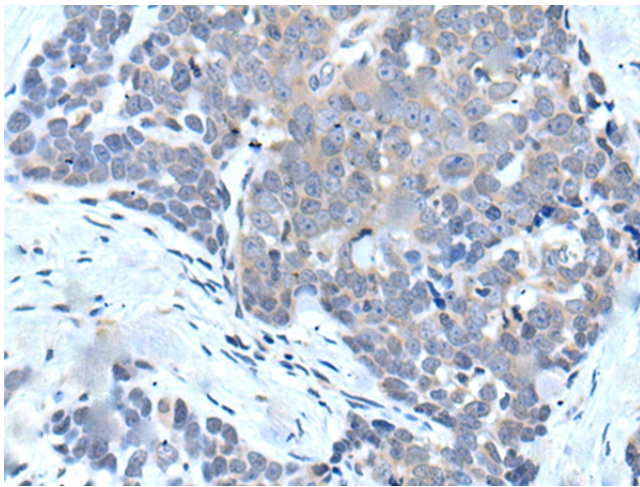
Gel: 6%SDS-PAGE
 Lysate: 40 µg
 Lane 1-7: Hela
 HEPG2
 Raji
 NIH/3T3 and A549 cell lysates
 Human cerebella tissue and Mouse brain tissue lysates
 Primary antibody: TA372057 (VPS35 Antibody) at dilution 1/250
 Secondary antibody: Goat anti rabbit IgG at 1/8000 dilution
 Exposure time: 1 minute



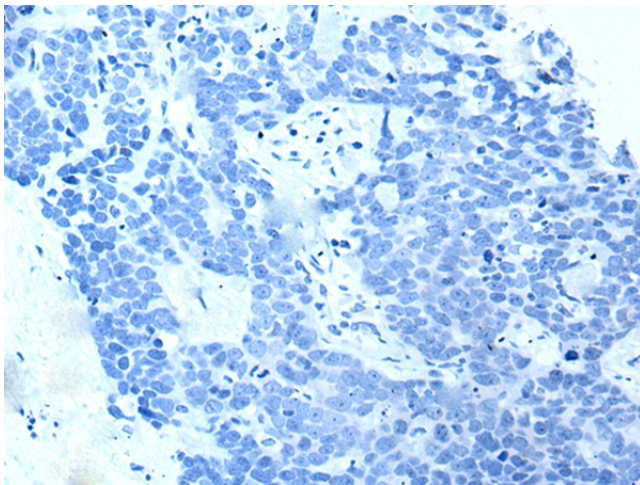
Immunohistochemistry of paraffin-embedded Human colorectal cancer tissue using TA372057 (VPS35 Antibody) at dilution 1/25 (Original magnification: ×200)



Immunohistochemistry of paraffin-embedded Human colorectal cancer tissue using TA372057 (VPS35 Antibody) at dilution 1/25, treated with synthetic peptide. (Original magnification: ×200)



Immunohistochemistry of paraffin-embedded Human thyroid cancer tissue using TA372057 (VPS35 Antibody) at dilution 1/25 (Original magnification: ×200)



Immunohistochemistry of paraffin-embedded Human thyroid cancer tissue using TA372057 (VPS35 Antibody) at dilution 1/25, treated with synthetic peptide. (Original magnification: ×200)