

## Product datasheet for **TA372055S**

### VGLUT3 (SLC17A8) Rabbit Polyclonal Antibody

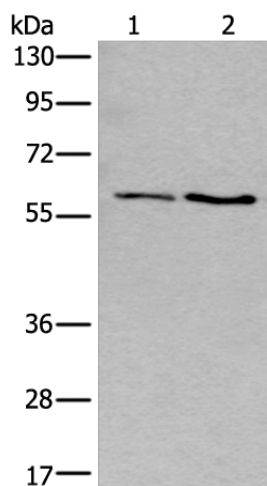
#### Product data:

Product Type:	Primary Antibodies
Applications:	WB
Recommended Dilution:	WB: 200-1000 WB positive control: Human cerebella tissue and Human cerebrum tissue lysates
Reactivity:	Human
Host:	Rabbit
Isotype:	IgG
Clonality:	Polyclonal
Immunogen:	Synthetic peptide of human SLC17A8
Formulation:	pH7.4 PBS, 0.05% NaN <sub>3</sub> , 40% Glycerol
Concentration:	lot specific
Purification:	Antigen affinity purification
Conjugation:	Unconjugated
Storage:	Store at -20°C.
Stability:	1 year
Predicted Protein Size:	65 kDa
Gene Name:	solute carrier family 17 member 8
Database Link:	<a href="#">Entrez Gene 246213 Human Q8NDX2</a>
Background:	This gene encodes a vesicular glutamate transporter. The encoded protein transports the neurotransmitter glutamate into synaptic vesicles before it is released into the synaptic cleft. Mutations in this gene are the cause of autosomal-dominant nonsyndromic type 25 deafness. Alternate splicing results in multiple transcript variants.
Synonyms:	DFNA25; VGLUT3



[View online »](#)

## Product images:



Gel: 8%SDS-PAGE  
Lysate: 40  $\mu$ g  
Lane 1-2: Human cerebella tissue and Human cerebrum tissue lysates  
Primary antibody: [TA372055] (SLC17A8 Antibody) at dilution 1/250  
Secondary antibody: Goat anti rabbit IgG at 1/8000 dilution  
Exposure time: 10 seconds