

Product datasheet for **TA372043S**

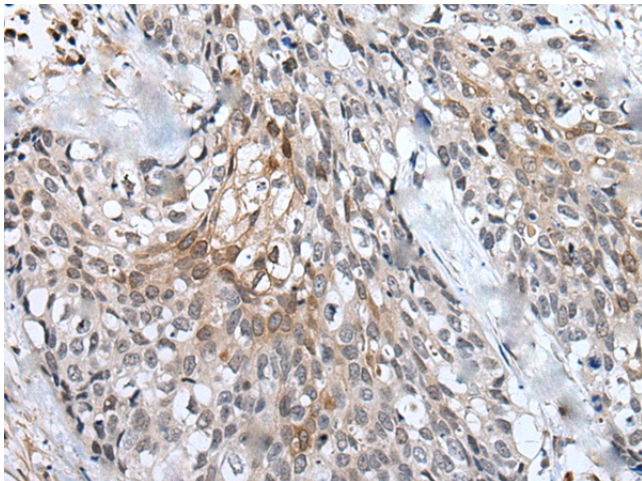
SPAG4L (SUN5) Rabbit Polyclonal Antibody

Product data:

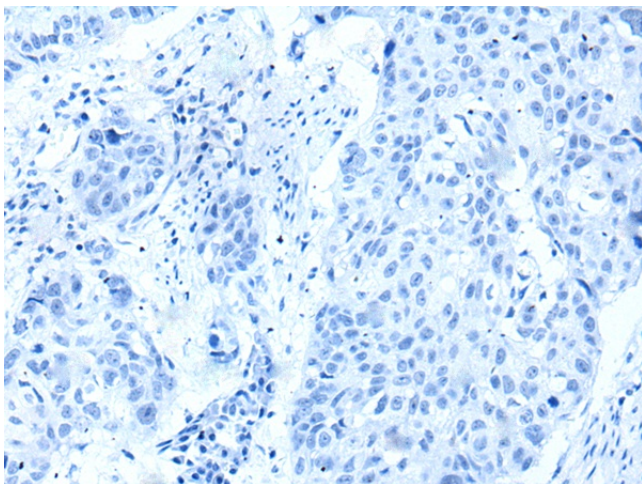
Product Type:	Primary Antibodies
Applications:	IHC
Recommended Dilution:	IHC: 20-100 Positive control: Human lung cancer Predicted cell location: Nucleus or Cell membrane
Reactivity:	Human, Mouse
Host:	Rabbit
Isotype:	IgG
Clonality:	Polyclonal
Immunogen:	Synthetic peptide of human SUN5
Formulation:	pH7.4 PBS, 0.05% NaN ₃ , 40% Glycerol
Concentration:	lot specific
Purification:	Antigen affinity purification
Conjugation:	Unconjugated
Storage:	Store at -20°C.
Stability:	1 year
Gene Name:	Sad1 and UNC84 domain containing 5
Database Link:	Entrez Gene 140732 Human Q8TC36
Background:	TSARG4 (testis and spermatogenesis-related gene 4 protein), also known as SPAG4L (sperm-associated antigen 4-like protein) or SRG4 (spermatogenesis-related gene 4) in mice, is a ubiquitously expressed protein in humans but, in mice, it is specifically expressed in the testis. TSARG4 belongs to the spindle pole body family of proteins and contains one Unc84/SUN domain and a potential transmembrane region. The human TSARG4 protein shares 74% amino acid identity with its mouse counterpart. In mice, TSARG4 is found in round spermatids and spermatocytes and may participate in mitosis. It has been hypothesized that TSARG4 localizes to the nuclear envelope.
Synonyms:	dj726C3.1; SPAG4L; TSARG4



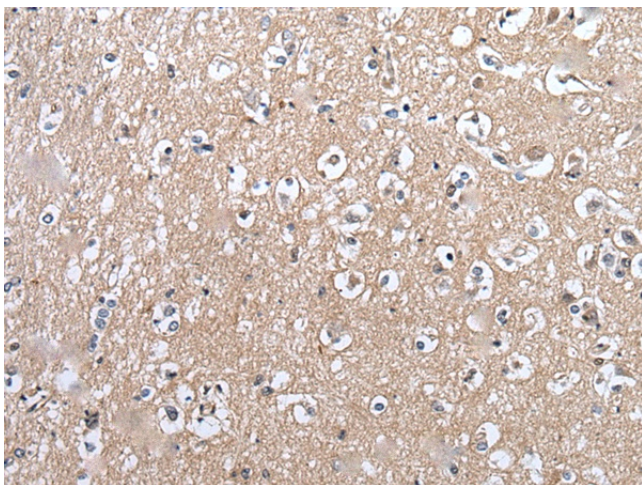
[View online »](#)

Product images:

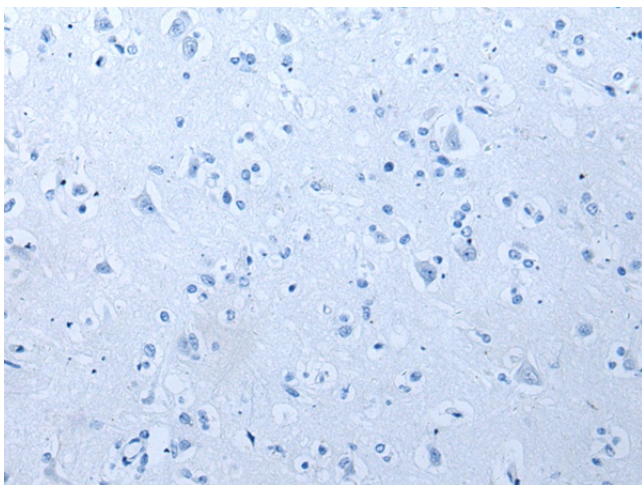
Immunohistochemistry of paraffin-embedded Human lung cancer tissue using [TA372043] (SUN5 Antibody) at dilution 1/25 (Original magnification: $\times 200$)



Immunohistochemistry of paraffin-embedded Human lung cancer tissue using [TA372043] (SUN5 Antibody) at dilution 1/25, treated with synthetic peptide. (Original magnification: $\times 200$)



Immunohistochemistry of paraffin-embedded Human brain tissue using [TA372043] (SUN5 Antibody) at dilution 1/25 (Original magnification: ×200)



Immunohistochemistry of paraffin-embedded Human brain tissue using [TA372043] (SUN5 Antibody) at dilution 1/25, treated with synthetic peptide. (Original magnification: ×200)