

Product datasheet for **TA372033S**

WDSUB1 Rabbit Polyclonal Antibody

Product data:

Product Type:	Primary Antibodies
Applications:	IHC, WB
Recommended Dilution:	WB: 200-1000 WB positive control: 231K562293T and Hela cell lysates IHC: 25-100 Positive control: Human liver cancer Predicted cell location: Cytoplasm and Cell membrane
Reactivity:	Human
Host:	Rabbit
Isotype:	IgG
Clonality:	Polyclonal
Immunogen:	Synthetic peptide of human WDSUB1
Formulation:	pH7.4 PBS, 0.05% NaN ₃ , 40% Glycerol
Concentration:	lot specific
Purification:	Antigen affinity purification
Conjugation:	Unconjugated
Storage:	Store at -20°C.
Stability:	1 year
Predicted Protein Size:	53 kDa
Gene Name:	WD repeat, sterile alpha motif and U-box domain containing 1
Database Link:	Entrez Gene 151525 Human Q8N9V3



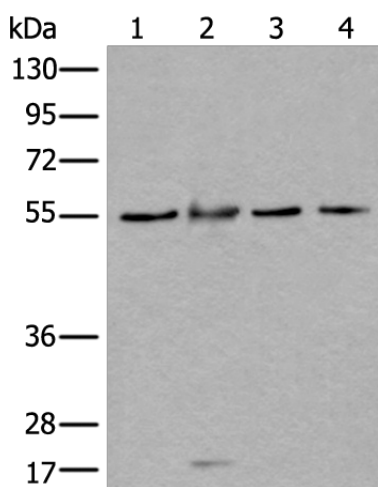
[View online »](#)

Background:

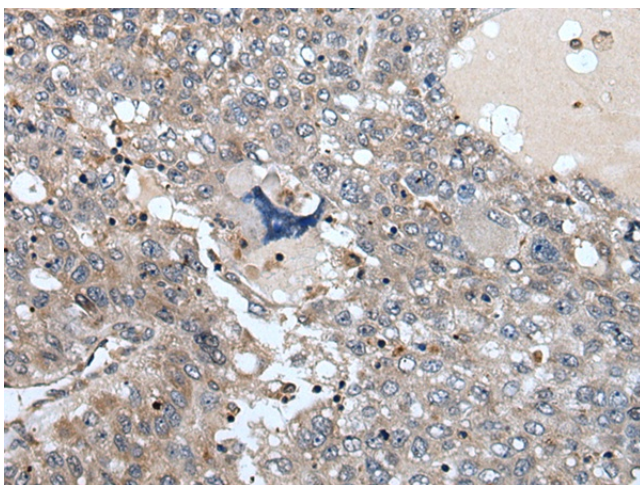
WDSUB1 (WD repeat, SAM and U-box domain-containing protein 1), also known as UBOX6 or WDSAM1, is a 476 amino acid protein that contains one SAM (sterile alpha motif) domain, one U-box domain and seven WD repeats. Existing as two isoforms due to alternative splicing, WDSUB1 is encoded by a gene located on chromosome 2. The second largest human chromosome, chromosome 2 encodes over 1,400 genes and comprises nearly 8% of the human genome, housing a number of disease-associated genes. Harlequin ichthyosis, a rare and morbid skin deformity, is associated with mutations in the ABCA12 gene, while the lipid metabolic disorder sitosterolemia is associated with defects in the ABCG5 and ABCG8 genes. Additionally, an extremely rare recessive genetic disorder, Alström syndrome, is caused by mutations in the ALMS1 gene, which maps to chromosome 2.

Synonyms:

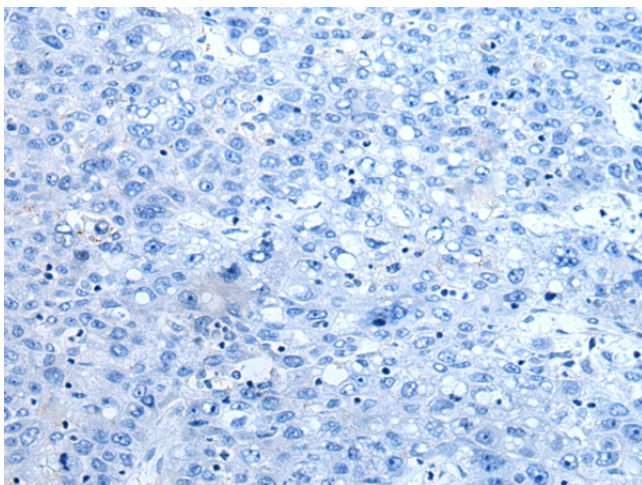
2610014F08Rik; FLJ36175; UBOX6; WDSAM1

Product images:


Gel: 8%SDS-PAGE
 Lysate: 40 µg
 Lane 1-4: 231
 K562
 293T and Hela cell lysates
 Primary antibody: [TA372033] (WDSUB1
 Antibody) at dilution 1/250
 Secondary antibody: Goat anti rabbit IgG at
 1/8000 dilution
 Exposure time: 10 seconds



Immunohistochemistry of paraffin-embedded
 Human liver cancer tissue using [TA372033]
 (WDSUB1 Antibody) at dilution 1/25 (Original
 magnification: ×200)



Immunohistochemistry of paraffin-embedded Human liver cancer tissue using [TA372033] (WDSUB1 Antibody) at dilution 1/25, treated with synthetic peptide. (Original magnification: ×200)