

## Product datasheet for **TA372017S**

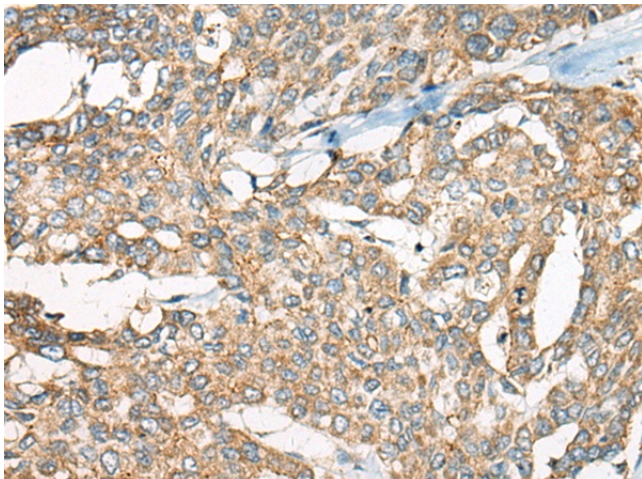
### YEATS2 Rabbit Polyclonal Antibody

#### Product data:

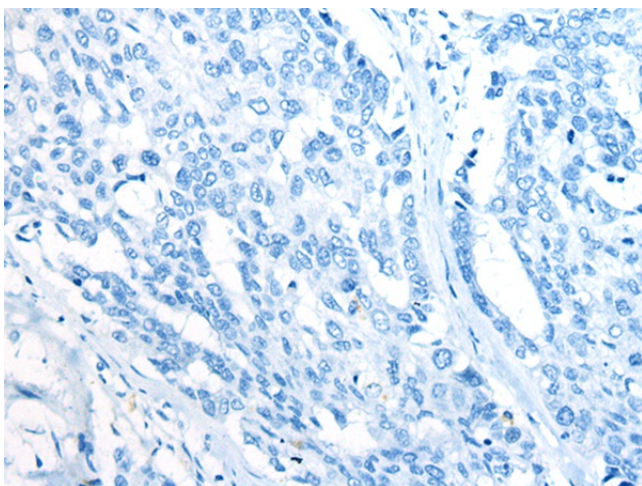
|                       |  |
|-----------------------|--|
| Product Type:         | Primary Antibodies   |
| Applications:         | IHC  |
| Recommended Dilution: | IHC: 40-200<br>Positive control: Human liver cancer<br>Predicted cell location: Cytoplasm and Cell membrane  |
| Reactivity:           | Human, Mouse   |
| Host:                 | Rabbit   |
| Isotype:              | IgG  |
| Clonality:            | Polyclonal   |
| Immunogen:            | Synthetic peptide of human YEATS2  |
| Formulation:          | pH7.4 PBS, 0.05% NaN <sub>3</sub> , 40% Glycerol   |
| Concentration:        | lot specific   |
| Purification:         | Antigen affinity purification  |
| Conjugation:          | Unconjugated   |
| Storage:              | Store at -20°C.  |
| Stability:            | 1 year   |
| Gene Name:            | YEATS domain containing 2  |
| Database Link:        | <a href="#">Entrez Gene 55689 Human Q9ULM3</a>   |
| Background:           | YEATS2 is a scaffolding subunit of the ADA2A (TADA2A; MIM 602276)-containing (ATAC) histone acetyltransferase complex (Wang et al., 2008 [PubMed 18838386]). |
| Synonyms:             | FLJ10201; FLJ12841; FLJ13308; FLJ33401; FLJ34335; KIAA1197   |



[View online »](#)

**Product images:**

Immunohistochemistry of paraffin-embedded Human liver cancer tissue using [TA372017] (YEATS2 Antibody) at dilution 1/55 (Original magnification: ×200)



Immunohistochemistry of paraffin-embedded Human liver cancer tissue using [TA372017] (YEATS2 Antibody) at dilution 1/55, treated with synthetic peptide. (Original magnification: ×200)