

Product datasheet for **TA372003S**

ZPLD1 Rabbit Polyclonal Antibody

Product data:

Product Type:	Primary Antibodies
Applications:	WB
Recommended Dilution:	WB: 200-1000 WB positive control: Hela and A549 cell lysates
Reactivity:	Human, Mouse
Host:	Rabbit
Isotype:	IgG
Clonality:	Polyclonal
Immunogen:	Synthetic peptide of human ZPLD1
Formulation:	pH7.4 PBS, 0.05% NaN ₃ , 40% Glycerol
Concentration:	lot specific
Purification:	Antigen affinity purification
Conjugation:	Unconjugated
Storage:	Store at -20°C.
Stability:	1 year
Predicted Protein Size:	46 kDa
Gene Name:	zona pellucida-like domain containing 1
Database Link:	Entrez Gene 131368 Human Q8TCW7



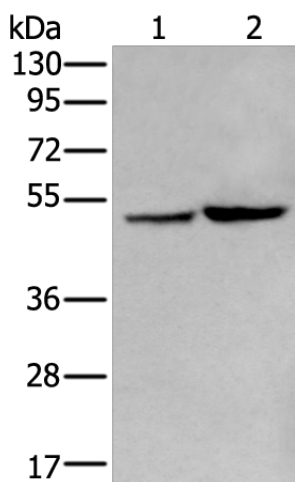
[View online »](#)

Background:

Many proteins containing ZP (zona pellucida) domains play fundamental roles in development, immunity, hearing and cancer. These domains are located near the carboxy-terminus of the polypeptide and typically consist of approximately 260 amino acids. ZP domain-containing proteins are often glycosylated and are usually present in filaments or matrices and therefore are thought to be involved in protein polymerization. ZPLD1 (Zona pellucida-like domain-containing protein 1) is a 415 amino acid single-pass transmembrane protein that contains one ZP domain. The gene encoding ZPLD1 maps to human chromosome 3, which is made up of about 214 million bases encoding over 1,100 genes, including a chemokine receptor (CKR) gene cluster and a variety of human cancer-related gene loci. There are two isoforms of ZPLD1 that are produced as a result of alternative splicing events.

Synonyms:

ZPLD1

Product images:


Gel: 8%SDS-PAGE
Lysate: 40 µg
Lane 1-2: HeLa and A549 cell lysates
Primary antibody: [TA372003] (ZPLD1 Antibody)
at dilution 1/200
Secondary antibody: Goat anti rabbit IgG at
1/8000 dilution
Exposure time: 30 seconds