

## Product datasheet for **TA371999S**

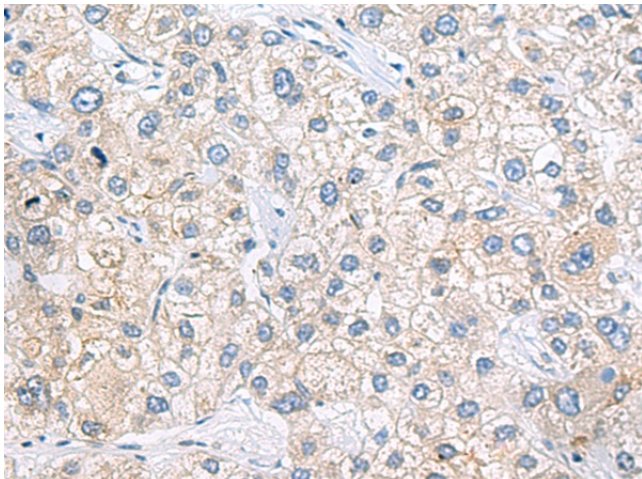
### ZNF35 Rabbit Polyclonal Antibody

#### Product data:

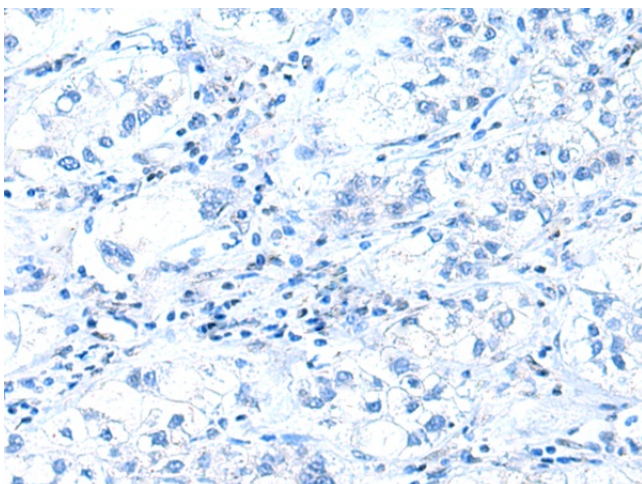
Product Type:	Primary Antibodies
Applications:	IHC
Recommended Dilution:	IHC: 50-100 Positive control: Human liver cancer Predicted cell location: Cytoplasm
Reactivity:	Human
Host:	Rabbit
Isotype:	IgG
Clonality:	Polyclonal
Immunogen:	Synthetic peptide of human ZNF35
Formulation:	pH7.4 PBS, 0.05% NaN <sub>3</sub> , 40% Glycerol
Concentration:	lot specific
Purification:	Antigen affinity purification
Conjugation:	Unconjugated
Storage:	Store at -20°C.
Stability:	1 year
Gene Name:	zinc finger protein 35
Database Link:	<a href="#">Entrez Gene 7584 Human P13682</a>
Background:	May be involved in transcriptional regulation. Involved in cell differentiation and/or proliferation.
Synonyms:	HF.10; HF10; Zfp105



[View online »](#)

**Product images:**

Immunohistochemistry of paraffin-embedded Human liver cancer tissue using [TA371999] (ZNF35 Antibody) at dilution 1/40 (Original magnification:  $\times 200$ )



Immunohistochemistry of paraffin-embedded Human liver cancer tissue using [TA371999] (ZNF35 Antibody) at dilution 1/40, treated with synthetic peptide. (Original magnification:  $\times 200$ )