

## Product datasheet for **TA371998S**

### ZNF143 Rabbit Polyclonal Antibody

#### Product data:

Product Type:	Primary Antibodies
Applications:	IHC
Recommended Dilution:	IHC: 10-50 Positive control: Human liver cancer Predicted cell location: Nucleus
Reactivity:	Human, Mouse, Rat
Host:	Rabbit
Isotype:	IgG
Clonality:	Polyclonal
Immunogen:	Synthetic peptide of human ZNF143
Formulation:	pH7.4 PBS, 0.05% NaN <sub>3</sub> , 40% Glycerol
Concentration:	lot specific
Purification:	Antigen affinity purification
Conjugation:	Unconjugated
Storage:	Store at -20°C.
Stability:	1 year
Gene Name:	zinc finger protein 143
Database Link:	<a href="#">Entrez Gene 7702 Human P52747</a>

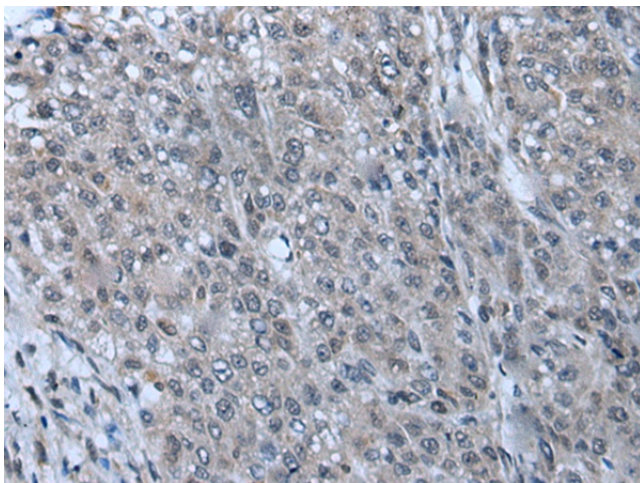
**Background:** ZNF143 (zinc finger protein 143), also known as SBF, STAF or pHZ-1, is a 626 amino acid protein that contains seven C2H2-type zinc fingers and belongs to the GLI (glioma-associated oncogene) C2H2-type zinc-finger family. Localized to the nucleus and expressed ubiquitously with highest expression in ovaries, ZNF143 functions as a transcriptional activator that, via its C2H2-type zinc domains, binds to the SPH motif found in the promoters of small nuclear RNAs (snRNA). Through its ability to bind the promoters of various snRNA genes, ZNF143 controls the subsequent expression of the corresponding protein products. ZNF143 expression is induced upon DNA damage, suggesting an important role for ZNF143 in DNA repair events.



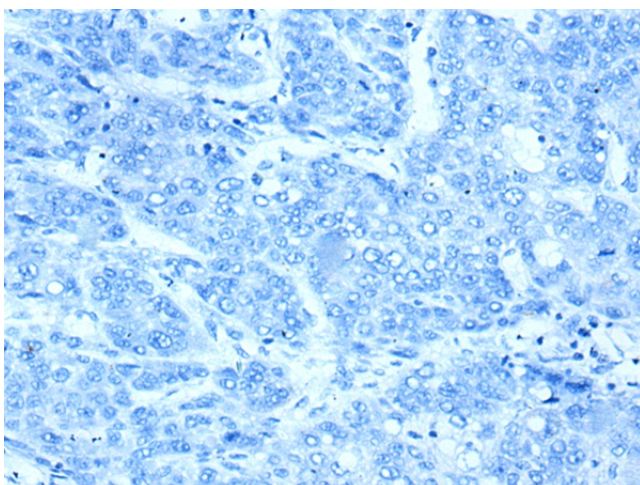
[View online »](#)

Synonyms: hStaf; pHZ-1; SBF; STAF

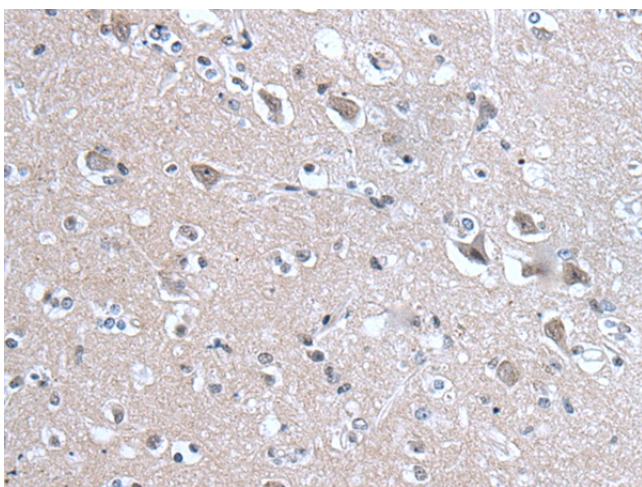
### Product images:



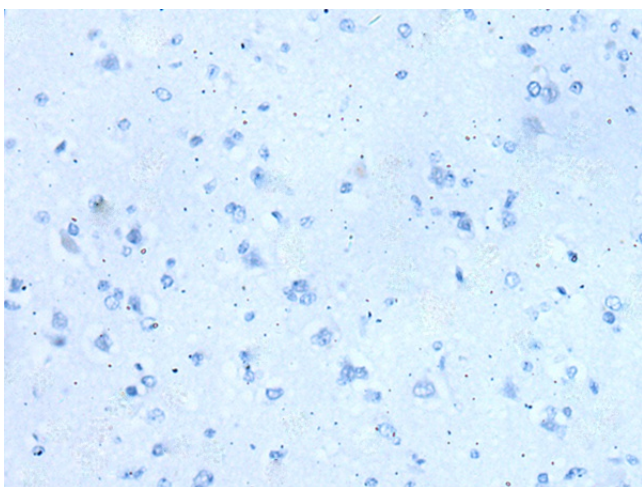
Immunohistochemistry of paraffin-embedded Human liver cancer tissue using [TA371998] (ZNF143 Antibody) at dilution 1/20 (Original magnification: x200)



Immunohistochemistry of paraffin-embedded Human liver cancer tissue using [TA371998] (ZNF143 Antibody) at dilution 1/20, treated with synthetic peptide. (Original magnification: x200)



Immunohistochemistry of paraffin-embedded Human brain tissue using [TA371998] (ZNF143 Antibody) at dilution 1/20 (Original magnification: ×200)



Immunohistochemistry of paraffin-embedded Human brain tissue using [TA371998] (ZNF143 Antibody) at dilution 1/20, treated with synthetic peptide. (Original magnification: ×200)