

Product datasheet for **TA371995S**

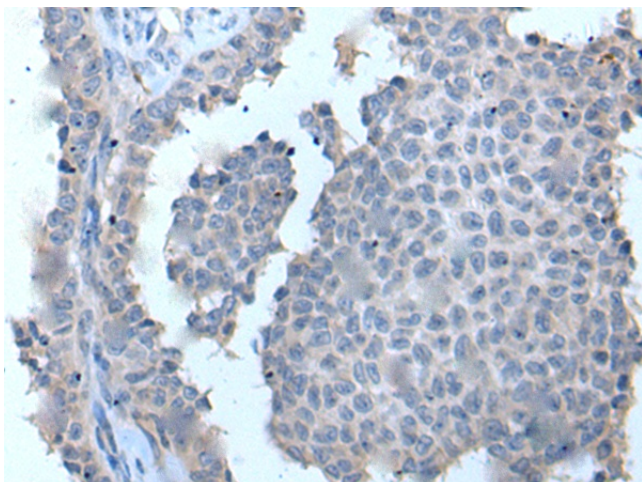
ZDHHC5 Rabbit Polyclonal Antibody

Product data:

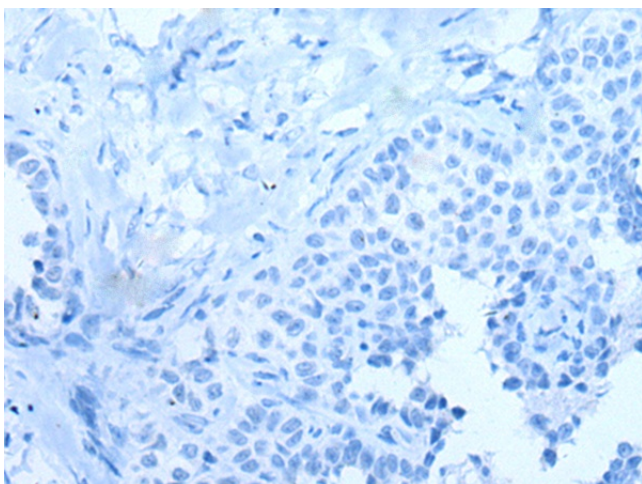
Product Type:	Primary Antibodies
Applications:	IHC
Recommended Dilution:	IHC: 20-100 Positive control: Human ovarian cancer Predicted cell location: Cell membrane and Cytoplasm
Reactivity:	Human, Mouse, Rat
Host:	Rabbit
Isotype:	IgG
Clonality:	Polyclonal
Immunogen:	Synthetic peptide of human ZDHHC5
Formulation:	pH7.4 PBS, 0.05% NaN ₃ , 40% Glycerol
Concentration:	lot specific
Purification:	Antigen affinity purification
Conjugation:	Unconjugated
Storage:	Store at -20°C.
Stability:	1 year
Gene Name:	zinc finger DHHC-type containing 5
Database Link:	Entrez Gene 25921 Human Q9C0B5
Background:	Palmitoyl acyltransferase for the G-protein coupled receptor SSTR5. Also palmitoylates FLOT2 (By similarity).
Synonyms:	DHHC-5; DKFZp586K0524; KIAA1748; ZNF375



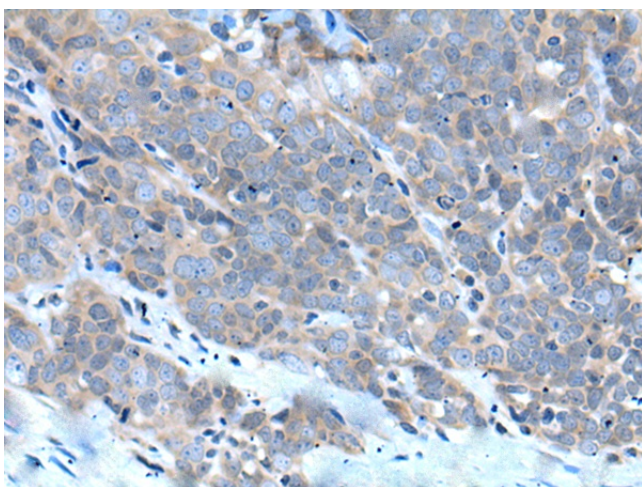
[View online »](#)

Product images:


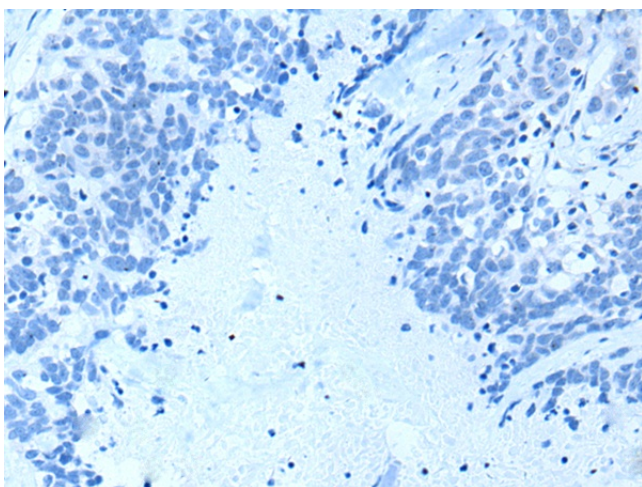
Immunohistochemistry of paraffin-embedded Human ovarian cancer tissue using [TA371995] (ZDHHC5 Antibody) at dilution 1/20 (Original magnification: ×200)



Immunohistochemistry of paraffin-embedded Human ovarian cancer tissue using [TA371995] (ZDHHC5 Antibody) at dilution 1/20, treated with synthetic peptide. (Original magnification: ×200)



Immunohistochemistry of paraffin-embedded Human thyroid cancer tissue using [TA371995] (ZDHHC5 Antibody) at dilution 1/20 (Original magnification: ×200)



Immunohistochemistry of paraffin-embedded Human thyroid cancer tissue using [TA371995] (ZDHHC5 Antibody) at dilution 1/20, treated with synthetic peptide. (Original magnification: ×200)