

## Product datasheet for **TA371994S**

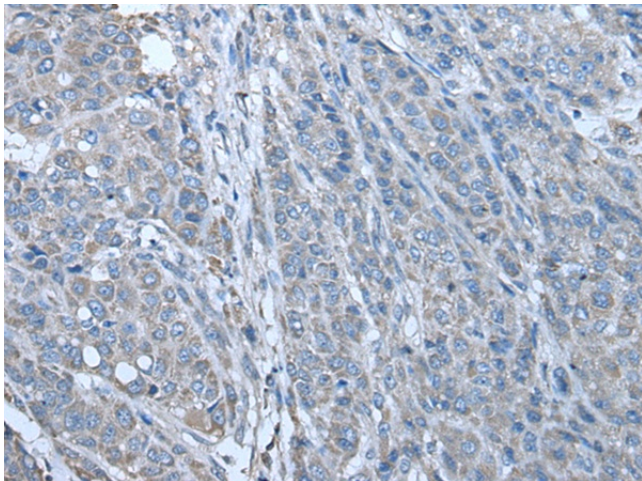
### ZC3HAV1 Rabbit Polyclonal Antibody

#### Product data:

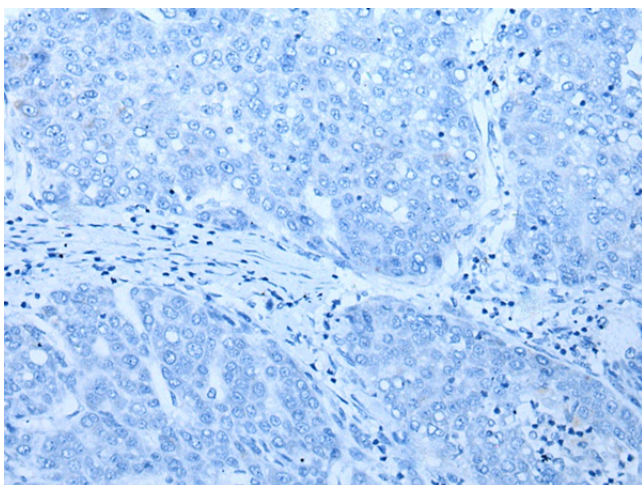
|                       |  |
|-----------------------|--|
| Product Type:         | Primary Antibodies   |
| Applications:         | IHC  |
| Recommended Dilution: | IHC: 45-300<br>Positive control: Human liver cancer<br>Predicted cell location: Cytoplasm  |
| Reactivity:           | Human  |
| Host:                 | Rabbit   |
| Isotype:              | IgG  |
| Clonality:            | Polyclonal   |
| Immunogen:            | Synthetic peptide of human ZC3HAV1   |
| Formulation:          | pH7.4 PBS, 0.05% NaN <sub>3</sub> , 40% Glycerol   |
| Concentration:        | lot specific   |
| Purification:         | Antigen affinity purification  |
| Conjugation:          | Unconjugated   |
| Storage:              | Store at -20°C.  |
| Stability:            | 1 year   |
| Gene Name:            | zinc finger CCCH-type containing, antiviral 1  |
| Database Link:        | <a href="#">Entrez Gene 56829 Human Q7Z2W4</a>   |
| Background:           | This gene encodes a CCCH-type zinc finger protein that is thought to prevent infection by retroviruses. Studies of the rat homolog indicate that the protein may primarily function to inhibit viral gene expression and induce an innate immunity to viral infection. Alternative splicing occurs at this locus and two variants, each encoding distinct isoforms, are described. |
| Synonyms:             | DKFZp686F2052; DKFZp686H1869; DKFZp686O19171; FLB6421; FLJ13288; MGC48898; ZAP; ZC3H2; ZC3HDC2   |



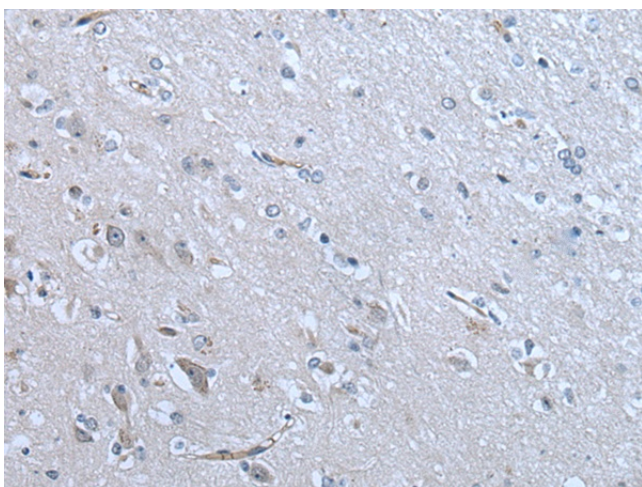
[View online »](#)

**Product images:**

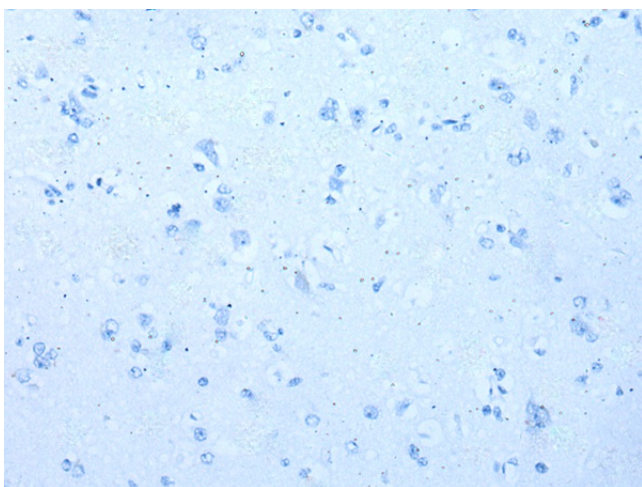
Immunohistochemistry of paraffin-embedded Human liver cancer tissue using [TA371994] (ZC3HAV1 Antibody) at dilution 1/70 (Original magnification:  $\times 200$ )



Immunohistochemistry of paraffin-embedded Human liver cancer tissue using [TA371994] (ZC3HAV1 Antibody) at dilution 1/70, treated with synthetic peptide. (Original magnification:  $\times 200$ )



Immunohistochemistry of paraffin-embedded Human brain tissue using [TA371994] (ZC3HAV1 Antibody) at dilution 1/70 (Original magnification: ×200)



Immunohistochemistry of paraffin-embedded Human brain tissue using [TA371994] (ZC3HAV1 Antibody) at dilution 1/70, treated with synthetic peptide. (Original magnification: ×200)