

Product datasheet for **TA371991S**

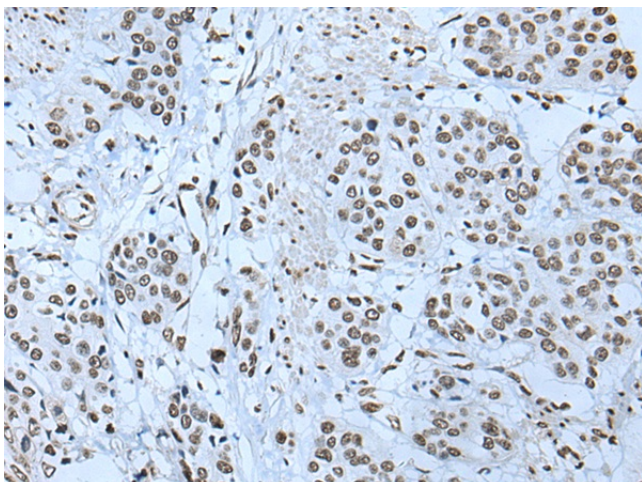
ZBTB4 Rabbit Polyclonal Antibody

Product data:

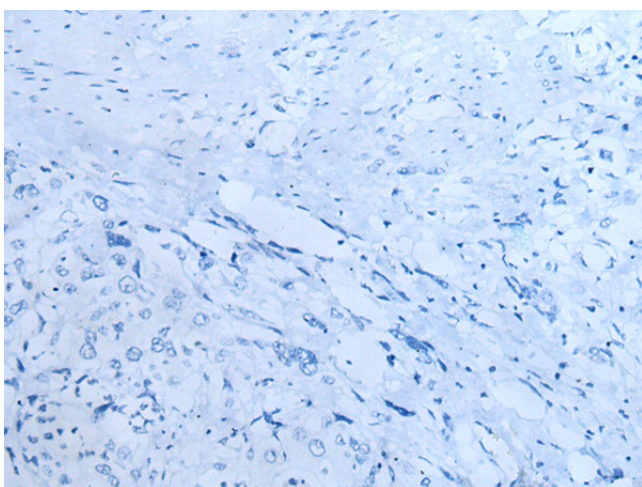
Product Type:	Primary Antibodies
Applications:	IHC
Recommended Dilution:	IHC: 20-100 Positive control: Human prostate cancer Predicted cell location: Nucleus
Reactivity:	Human, Rat
Host:	Rabbit
Isotype:	IgG
Clonality:	Polyclonal
Immunogen:	Synthetic peptide of human ZBTB4
Formulation:	pH7.4 PBS, 0.05% NaN ₃ , 40% Glycerol
Concentration:	lot specific
Purification:	Antigen affinity purification
Conjugation:	Unconjugated
Storage:	Store at -20°C.
Stability:	1 year
Gene Name:	zinc finger and BTB domain containing 4
Database Link:	Entrez Gene 57659 Human Q9P1Z0
Background:	ZBTB4 (zinc finger and BTB domain containing 4), also known as KAISO-L1 (KAISO-like zinc finger protein 1), is a 1,013 amino acid nuclear protein that is involved in transcriptional regulation. ZBTB4 contains one BTB (POZ) domain, six C2H2-type zinc fingers and is phosphorylated and downregulated by HIPK2. The gene encoding ZBTB4 maps to human chromosome 17, which comprises over 2.5% of the human genome and encodes over 1,200 genes.
Synonyms:	KAISO-L1; KIAA1538



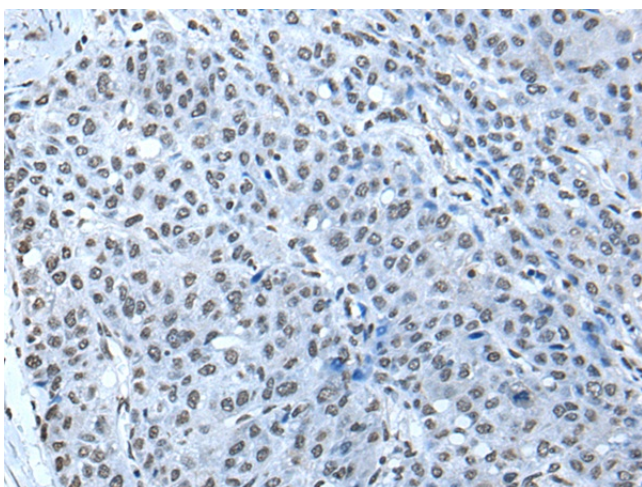
[View online »](#)

Product images:

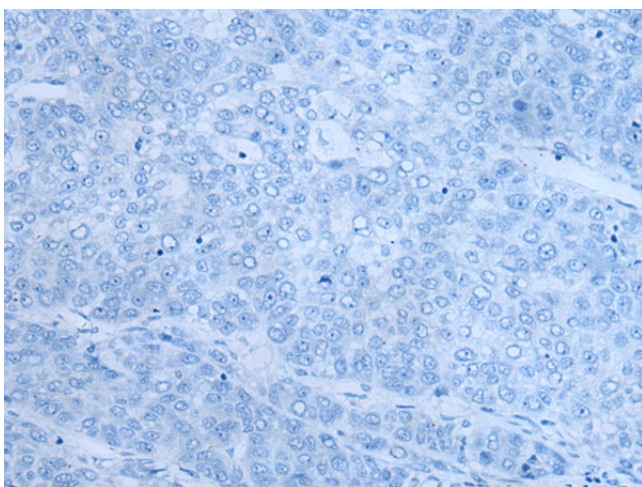
Immunohistochemistry of paraffin-embedded Human prostate cancer tissue using [TA371991] (ZBTB4 Antibody) at dilution 1/20 (Original magnification: $\times 200$)



Immunohistochemistry of paraffin-embedded Human prostate cancer tissue using [TA371991] (ZBTB4 Antibody) at dilution 1/20, treated with synthetic peptide. (Original magnification: $\times 200$)



Immunohistochemistry of paraffin-embedded Human liver cancer tissue using [TA371991] (ZBTB4 Antibody) at dilution 1/20 (Original magnification: $\times 200$)



Immunohistochemistry of paraffin-embedded Human liver cancer tissue using [TA371991] (ZBTB4 Antibody) at dilution 1/20, treated with synthetic peptide. (Original magnification: $\times 200$)