

## Product datasheet for **TA371988**

### ZBTB10 Rabbit Polyclonal Antibody

#### Product data:

Product Type:	Primary Antibodies
Applications:	IHC, WB
Recommended Dilution:	WB: 500-2000 WB positive control: Jurkat cell lysate IHC: 50-300 Positive control: Human colorectal cancer Predicted cell location: Nucleus and Cytoplasm
Reactivity:	Human
Host:	Rabbit
Isotype:	IgG
Clonality:	Polyclonal
Immunogen:	Synthetic peptide of human ZBTB10
Formulation:	pH7.4 PBS, 0.05% NaN <sub>3</sub> , 40% Glycerol
Concentration:	lot specific
Purification:	Antigen affinity purification
Conjugation:	Unconjugated
Storage:	Store at -20°C.
Stability:	1 year
Predicted Protein Size:	95 kDa
Gene Name:	zinc finger and BTB domain containing 10
Database Link:	<a href="#">Entrez Gene 65986 Human Q96DT7</a>



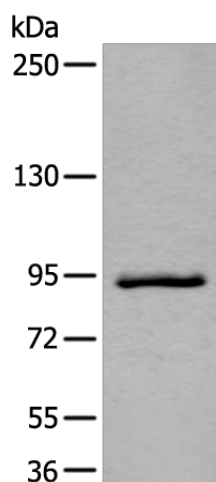
[View online »](#)

**Background:**

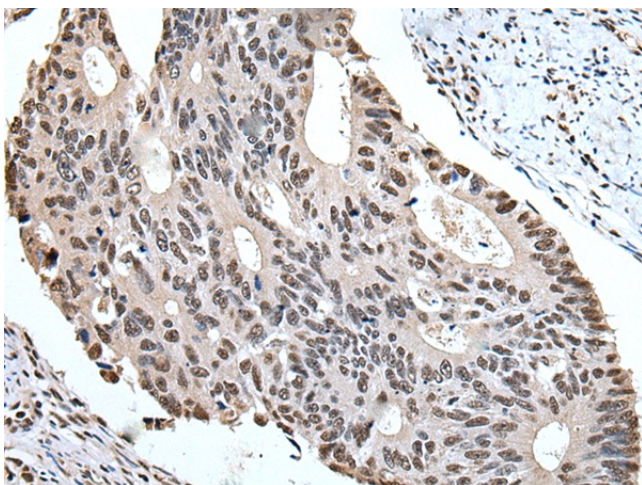
RINZF, also known as ZBTB10 (zinc finger and BTB domain containing protein 10), is a 847 amino acid protein that contains one BTB/POZ domain and two C2H2-type zinc fingers. Localized to the nucleus, RINZF is believed to play a role in transcriptional regulation. Specifically, RINZF is capable of binding to the CACC element of the Gastrin promoter. In this regard, RINZF competes with Sp1 for CACC binding and interferes with Sp1 transactivation, thereby regulating Gastrin gene expression. The rat RINZF protein shares 98% homology with the human RINZF protein, suggesting that RINZF is a conserved protein. Due to alternative splicing events, two RINZF isoforms exist. In addition, RINZF may be phosphorylated by ATR or ATM upon DNA damage.

**Synonyms:**

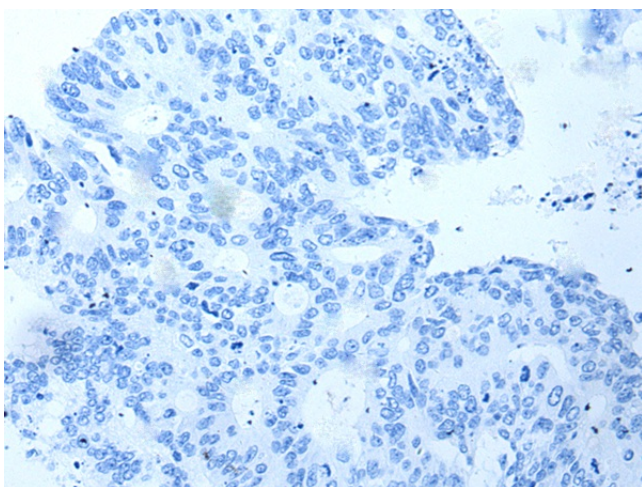
FLJ12752; OTTHUMP00000207119; RINZF; RINZFC

**Product images:**

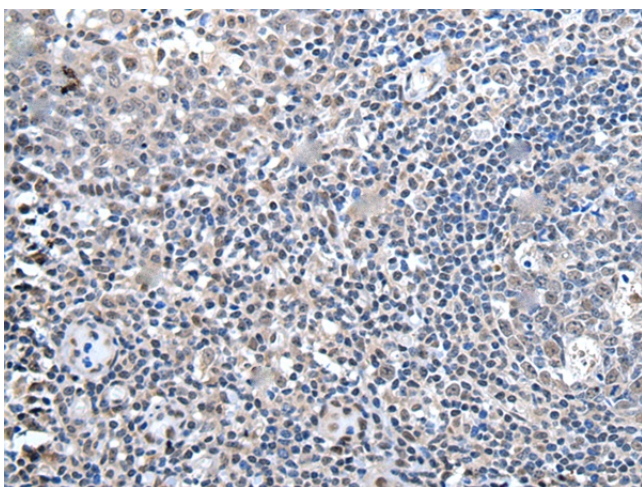
Gel: 6%SDS-PAGE  
Lysate: 40 µg  
Lane: Jurkat cell lysate  
Primary antibody: TA371988 (ZBTB10 Antibody) at dilution 1/800  
Secondary antibody: Goat anti rabbit IgG at 1/8000 dilution  
Exposure time: 40 seconds



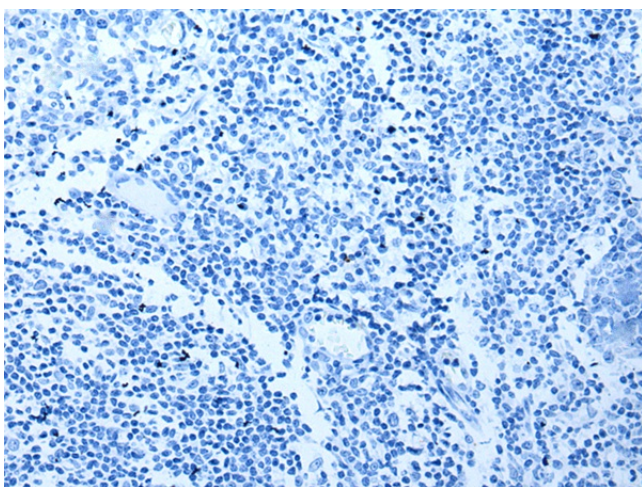
Immunohistochemistry of paraffin-embedded Human colorectal cancer tissue using TA371988 (ZBTB10 Antibody) at dilution 1/100 (Original magnification: ×200)



Immunohistochemistry of paraffin-embedded Human colorectal cancer tissue using TA371988 (ZBTB10 Antibody) at dilution 1/100, treated with synthetic peptide. (Original magnification: ×200)



Immunohistochemistry of paraffin-embedded Human tonsil tissue using TA371988 (ZBTB10 Antibody) at dilution 1/100 (Original magnification: ×200)



Immunohistochemistry of paraffin-embedded Human tonsil tissue using TA371988 (ZBTB10 Antibody) at dilution 1/100, treated with synthetic peptide. (Original magnification: ×200)