

Product datasheet for **TA371987S**

Contactin 1 (CNTN1) Rabbit Polyclonal Antibody

Product data:

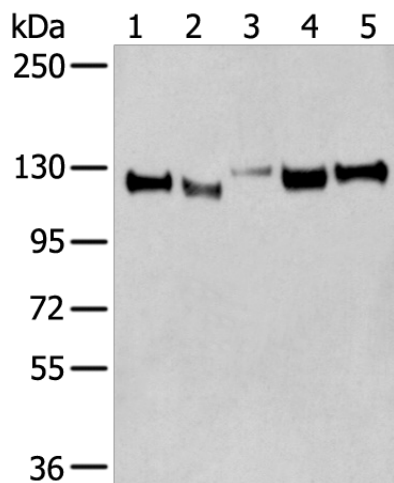
Product Type:	Primary Antibodies
Applications:	IHC, WB
Recommended Dilution:	WB: 500-2000 WB positive control: Human cerebella tissue□Human cerebrum tissue□Human fetal brain tissue□Mouse brain tissue □Rat brain tissue lysates IHC: 25-100 Positive control: Human thyroid cancer Predicted cell location: Cell membrane
Reactivity:	Human, Mouse, Rat
Host:	Rabbit
Isotype:	IgG
Clonality:	Polyclonal
Immunogen:	Synthetic peptide of human CNTN1
Formulation:	pH7.4 PBS, 0.05% NaN ₃ , 40% Glycerol
Concentration:	lot specific
Purification:	Antigen affinity purification
Conjugation:	Unconjugated
Storage:	Store at -20°C.
Stability:	1 year
Predicted Protein Size:	113 kDa
Gene Name:	contactin 1
Database Link:	Entrez Gene 1272 Human Q12860
Background:	The protein encoded by this gene is a member of the immunoglobulin superfamily. It is a glycosylphosphatidylinositol (GPI)-anchored neuronal membrane protein that functions as a cell adhesion molecule. It may play a role in the formation of axon connections in the developing nervous system. Multiple alternatively spliced transcript variants encoding different isoforms have been found for this gene.



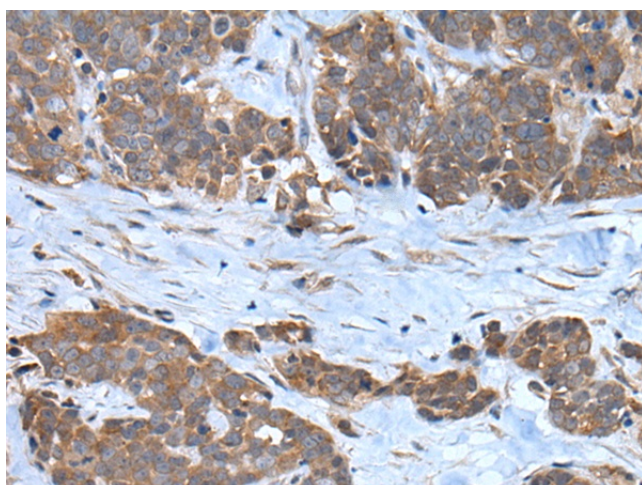
[View online »](#)

Synonyms: F3; GP135

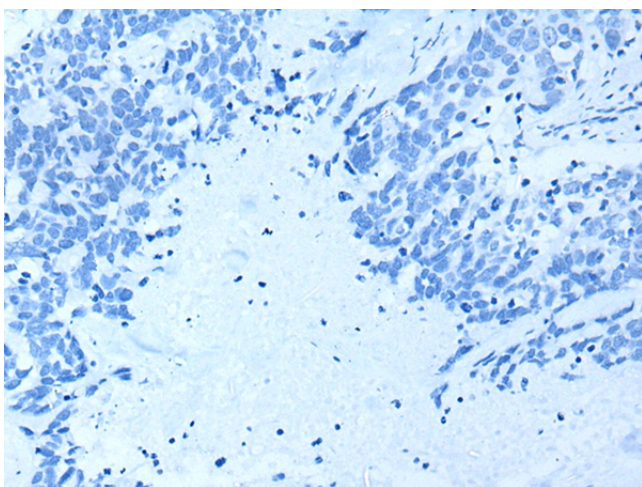
Product images:



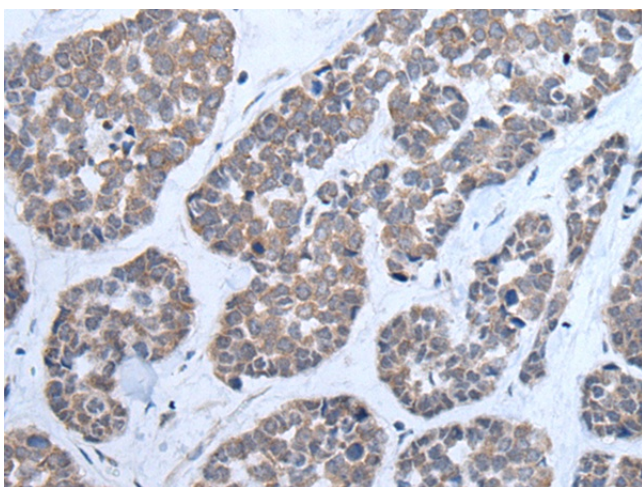
Gel: 6%SDS-PAGE
 Lysate: 40 µg
 Lane 1-5: Human cerebella tissue
 Human cerebrum tissue
 Human fetal brain tissue
 Mouse brain tissue
 Rat brain tissue lysates
 Primary antibody: [TA371987] (CNTN1 Antibody)
 at dilution 1/350
 Secondary antibody: Goat anti rabbit IgG at
 1/8000 dilution
 Exposure time: 10 seconds



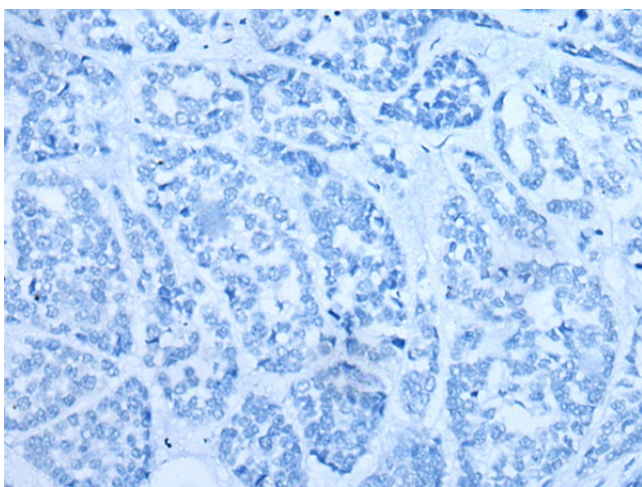
Immunohistochemistry of paraffin-embedded
 Human thyroid cancer tissue using [TA371987]
 (CNTN1 Antibody) at dilution 1/35 (Original
 magnification: x200)



Immunohistochemistry of paraffin-embedded Human thyroid cancer tissue using [TA371987] (CNTN1 Antibody) at dilution 1/35, treated with synthetic peptide. (Original magnification: ×200)



Immunohistochemistry of paraffin-embedded Human esophagus cancer tissue using [TA371987] (CNTN1 Antibody) at dilution 1/35 (Original magnification: ×200)



Immunohistochemistry of paraffin-embedded Human esophagus cancer tissue using [TA371987] (CNTN1 Antibody) at dilution 1/35, treated with synthetic peptide. (Original magnification: ×200)