

Product datasheet for **TA371985S**

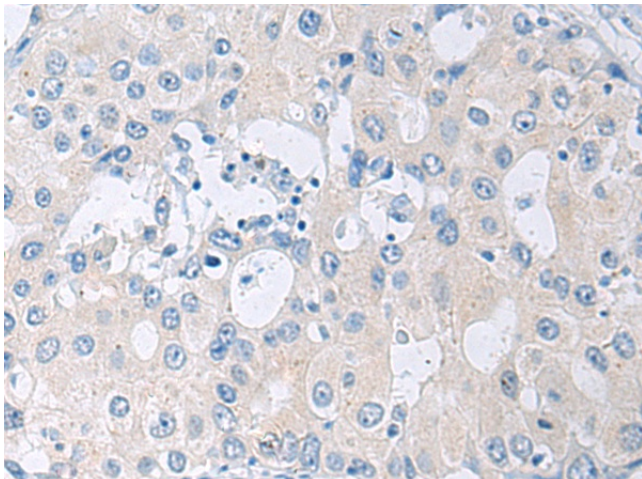
SLC23A1 Rabbit Polyclonal Antibody

Product data:

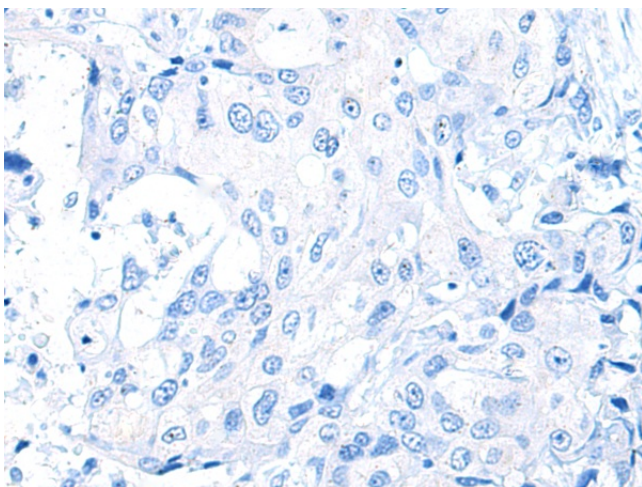
Product Type:	Primary Antibodies
Applications:	IHC
Recommended Dilution:	IHC: 25-50 Positive control: Human breast cancer Predicted cell location: Cytoplasm
Reactivity:	Human
Host:	Rabbit
Isotype:	IgG
Clonality:	Polyclonal
Immunogen:	Synthetic peptide of human SLC23A1
Formulation:	pH7.4 PBS, 0.05% NaN ₃ , 40% Glycerol
Concentration:	lot specific
Purification:	Antigen affinity purification
Conjugation:	Unconjugated
Storage:	Store at -20°C.
Stability:	1 year
Gene Name:	solute carrier family 23 member 1
Database Link:	Entrez Gene 9963 Human Q9UHI7
Background:	The absorption of vitamin C into the body and its distribution to organs requires two sodium-dependent vitamin C transporters. This gene encodes one of the two transporters. The encoded protein is active in bulk vitamin C transport involving epithelial surfaces. Previously, this gene had an official symbol of SLC23A2. Alternatively spliced transcript variants encoding different isoforms have been found for this gene.
Synonyms:	hSVCT1; MGC22361; SLC23A2; SVCT1; YSPL3



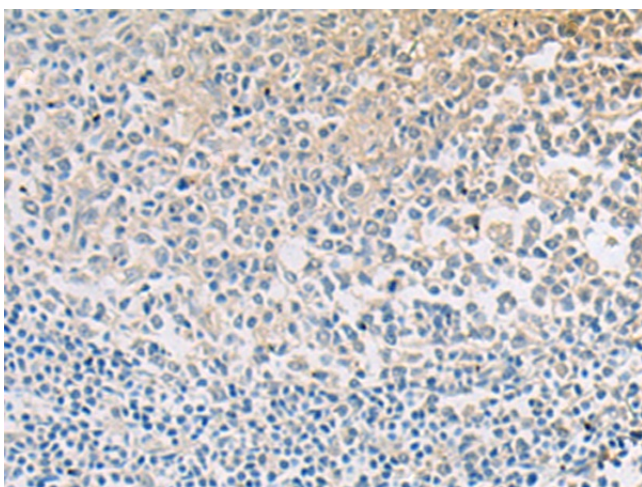
[View online »](#)

Product images:

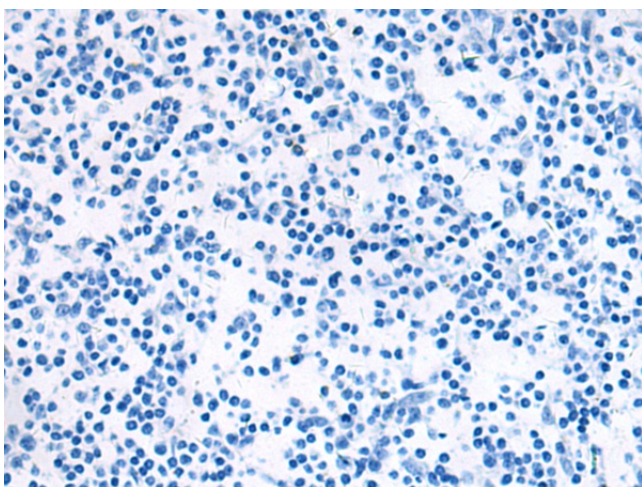
Immunohistochemistry of paraffin-embedded Human breast cancer tissue using [TA371985] (SLC23A1 Antibody) at dilution 1/30 (Original magnification: ×200)



Immunohistochemistry of paraffin-embedded Human breast cancer tissue using [TA371985] (SLC23A1 Antibody) at dilution 1/30, treated with synthetic peptide. (Original magnification: ×200)



Immunohistochemistry of paraffin-embedded Human tonsil tissue using [TA371985] (SLC23A1 Antibody) at dilution 1/30 (Original magnification: ×200)



Immunohistochemistry of paraffin-embedded Human tonsil tissue using [TA371985] (SLC23A1 Antibody) at dilution 1/30, treated with synthetic peptide. (Original magnification: ×200)