

## Product datasheet for **TA371979**

### Kallikrein 12 (KLK12) Rabbit Polyclonal Antibody

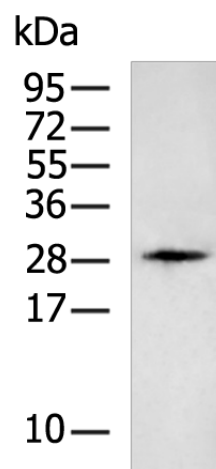
#### Product data:

Product Type:	Primary Antibodies
Applications:	IHC, WB
Recommended Dilution:	WB: 500-2000 WB positive control: HL60 cell lysate IHC: 50-100 Positive control: Human tonsil Predicted cell location: Secreted
Reactivity:	Human
Host:	Rabbit
Isotype:	IgG
Clonality:	Polyclonal
Immunogen:	Synthetic peptide of human KLK12
Formulation:	pH7.4 PBS, 0.05% NaN <sub>3</sub> , 40% Glycerol
Concentration:	lot specific
Purification:	Antigen affinity purification
Conjugation:	Unconjugated
Storage:	Store at -20°C.
Stability:	1 year
Predicted Protein Size:	27 kDa
Gene Name:	kallikrein related peptidase 12
Database Link:	<a href="#">Entrez Gene 43849 Human Q9UKR0</a>
Background:	Kallikreins are a subgroup of serine proteases having diverse physiological functions. Growing evidence suggests that many kallikreins are implicated in carcinogenesis and some have potential as novel cancer and other disease biomarkers. This gene is one of the fifteen kallikrein subfamily members located in a cluster on chromosome 19. Alternate splicing of this gene results in three transcript variants encoding different isoforms.
Synonyms:	DKFZp686H1078; KLK-L5; KLKL5; MGC42603

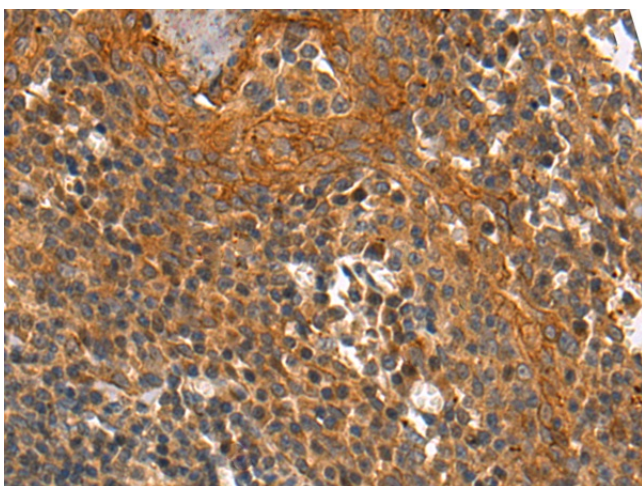


[View online »](#)

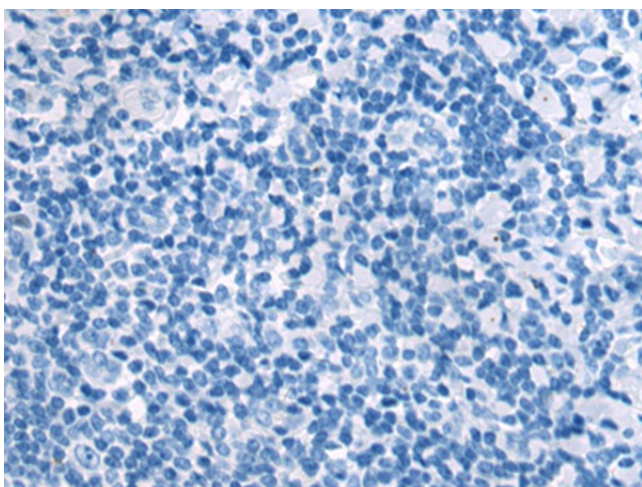
## Product images:



Gel: 12%SDS-PAGE  
Lysate: 40 µg  
Lane: HL60 cell lysate  
Primary antibody: TA371979 (KLK12 Antibody) at dilution 1/500  
Secondary antibody: Goat anti rabbit IgG at 1/5000 dilution  
Exposure time: 2 minutes



Immunohistochemistry of paraffin-embedded Human tonsil tissue using TA371979 (KLK12 Antibody) at dilution 1/20 (Original magnification: ×200)



Immunohistochemistry of paraffin-embedded Human tonsil tissue using TA371979 (KLK12 Antibody) at dilution 1/20, treated with synthetic peptide. (Original magnification:  $\times 200$ )