

## Product datasheet for **TA371978S**

### ETFB Rabbit Polyclonal Antibody

#### Product data:

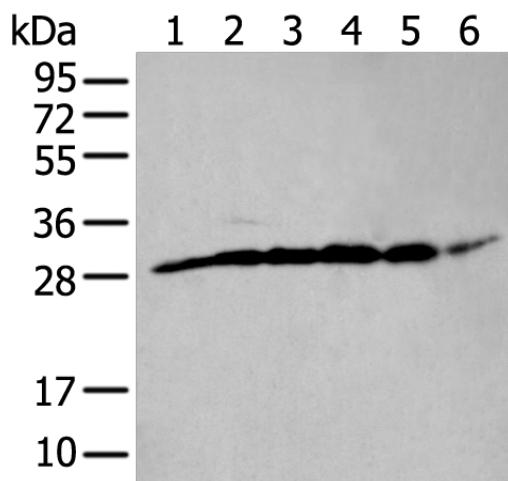
Product Type:	Primary Antibodies
Applications:	IHC, WB
Recommended Dilution:	WB: 500-2000 WB positive control: PC-3 cell□mouse skeletal muscle tissue□mouse brain tissue□human heart tissue□Hela and HEPG2 cell lysates IHC: 30-150 Positive control: Human brain Predicted cell location: Cytoplasm
Reactivity:	Human, Mouse, Rat
Host:	Rabbit
Isotype:	IgG
Clonality:	Polyclonal
Immunogen:	Synthetic peptide of human ETFB
Formulation:	pH7.4 PBS, 0.05% NaN <sub>3</sub> , 40% Glycerol
Concentration:	lot specific
Purification:	Antigen affinity purification
Conjugation:	Unconjugated
Storage:	Store at -20°C.
Stability:	1 year
Predicted Protein Size:	28 kDa
Gene Name:	electron transfer flavoprotein beta subunit
Database Link:	<a href="#">Entrez Gene 2109 Human P38117</a>
Background:	This gene encodes electron-transfer-flavoprotein, beta polypeptide, which shuttles electrons between primary flavoprotein dehydrogenases involved in mitochondrial fatty acid and amino acid catabolism and the membrane-bound electron transfer flavoprotein ubiquinone oxidoreductase. The gene deficiencies have been implicated in type II glutaricaciduria. Alternatively spliced transcript variants have been found for this gene.



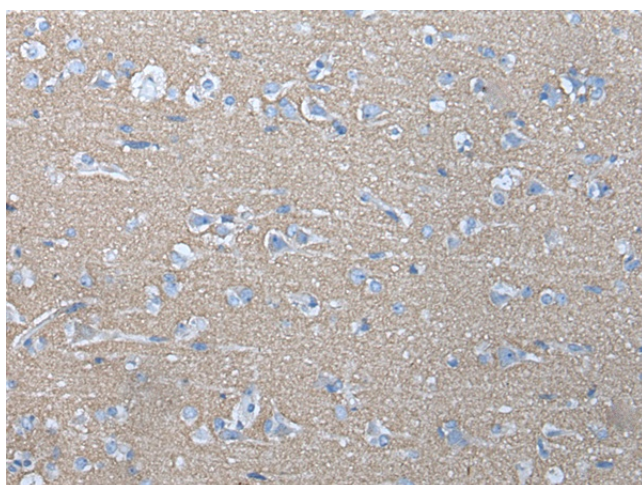
[View online »](#)

Synonyms: Beta-ETF; FP585; MADD

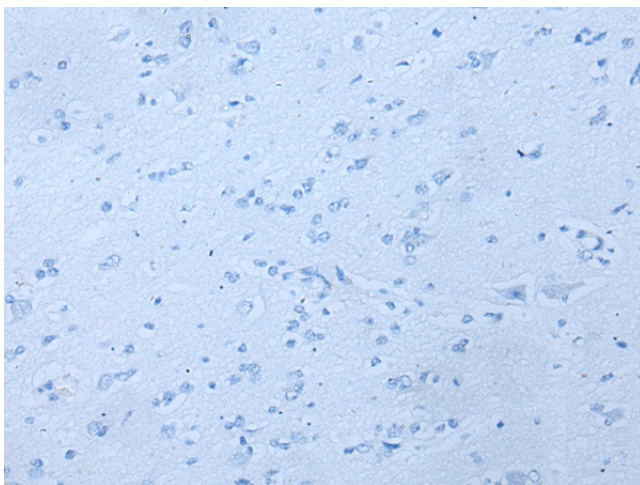
**Product images:**



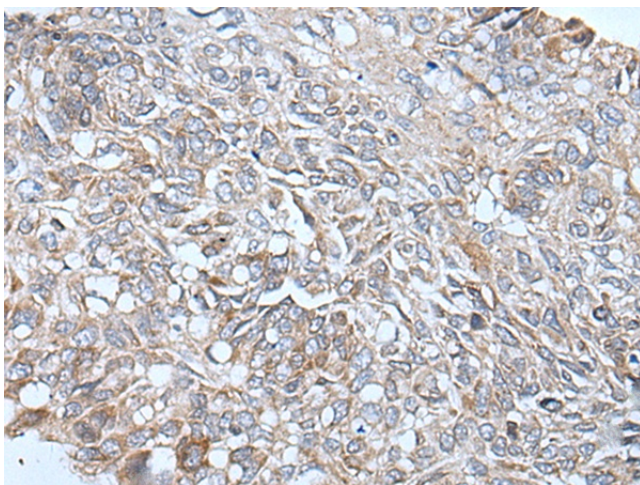
Gel: 12%SDS-PAGE  
 Lysate: 40 µg  
 Lane 1-6: PC-3 cell  
 mouse skeletal muscle tissue  
 mouse brain tissue  
 human heart tissue  
 Hela and HEPG2 cell lysates  
 Primary antibody: [TA371978] (ETFB Antibody) at dilution 1/400  
 Secondary antibody: Goat anti rabbit IgG at 1/8000 dilution  
 Exposure time: 1 minute



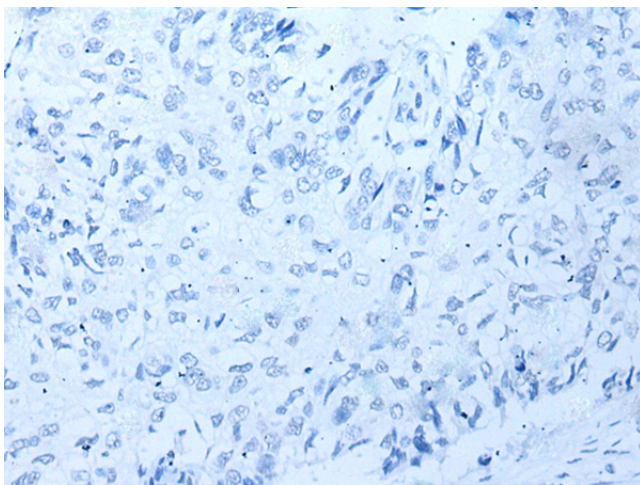
Immunohistochemistry of paraffin-embedded Human brain tissue using [TA371978] (ETFB Antibody) at dilution 1/40 (Original magnification: ×200)



Immunohistochemistry of paraffin-embedded Human brain tissue using [TA371978] (ETFB Antibody) at dilution 1/40, treated with synthetic peptide. (Original magnification: x200)



Immunohistochemistry of paraffin-embedded Human lung cancer tissue using [TA371978] (ETFB Antibody) at dilution 1/40 (Original magnification: x200)



Immunohistochemistry of paraffin-embedded Human lung cancer tissue using [TA371978] (ETFB Antibody) at dilution 1/40, treated with synthetic peptide. (Original magnification: x200)