

Product datasheet for **TA371963**

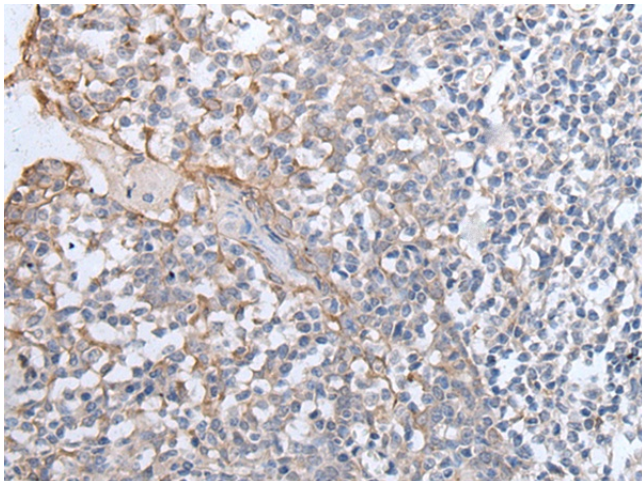
GPD2 Rabbit Polyclonal Antibody

Product data:

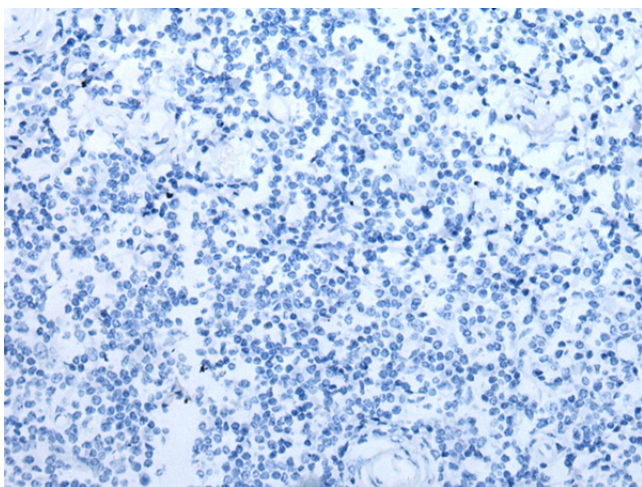
Product Type:	Primary Antibodies
Applications:	IHC
Recommended Dilution:	IHC: 30-150 Positive control: Human tonsil Predicted cell location: Cytoplasm
Reactivity:	Human, Mouse, Rat
Host:	Rabbit
Isotype:	IgG
Clonality:	Polyclonal
Immunogen:	Synthetic peptide of human GPD2
Formulation:	pH7.4 PBS, 0.05% NaN ₃ , 40% Glycerol
Concentration:	lot specific
Purification:	Antigen affinity purification
Conjugation:	Unconjugated
Storage:	Store at -20°C.
Stability:	1 year
Gene Name:	glycerol-3-phosphate dehydrogenase 2
Database Link:	Entrez Gene 2820 Human P43304
Background:	The protein encoded by this gene localizes to the inner mitochondrial membrane and catalyzes the conversion of glycerol-3-phosphate to dihydroxyacetone phosphate, using FAD as a cofactor. Along with GDP1, the encoded protein constitutes the glycerol phosphate shuttle, which reoxidizes NADH formed during glycolysis. Two transcript variants encoding the same protein have been found for this gene.
Synonyms:	AA408484; AI448216; AU021455; AW494132; Gdm1; Gpd-m; GPDH; Gpdh-m; mtGPDH; TISP38



[View online »](#)

Product images:

Immunohistochemistry of paraffin-embedded Human tonsil tissue using TA371963 (GPD2 Antibody) at dilution 1/40 (Original magnification: ×200)



Immunohistochemistry of paraffin-embedded Human tonsil tissue using TA371963 (GPD2 Antibody) at dilution 1/40, treated with synthetic peptide. (Original magnification: ×200)