

## Product datasheet for **TA371954**

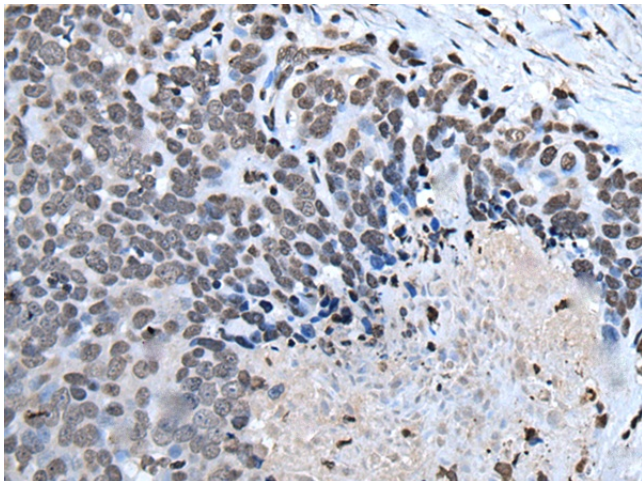
### HOXD1 Rabbit Polyclonal Antibody

#### Product data:

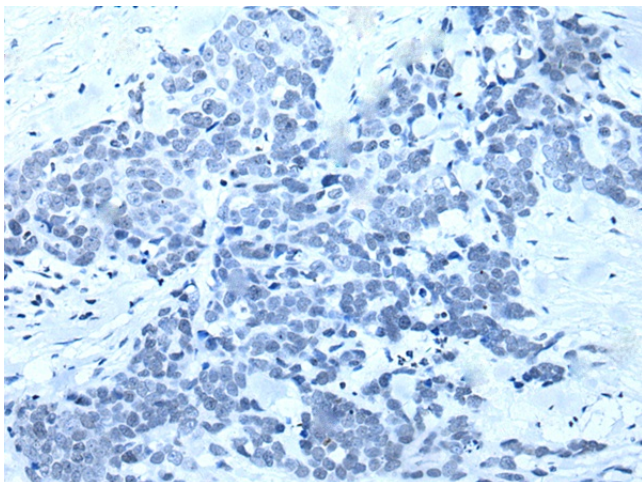
Product Type:	Primary Antibodies
Applications:	IHC
Recommended Dilution:	IHC: 25-100 Positive control: Human thyroid cancer Predicted cell location: Nucleus
Reactivity:	Human, Mouse
Host:	Rabbit
Isotype:	IgG
Clonality:	Polyclonal
Immunogen:	Synthetic peptide of human HOXD1
Formulation:	pH7.4 PBS, 0.05% NaN <sub>3</sub> , 40% Glycerol
Concentration:	lot specific
Purification:	Antigen affinity purification
Conjugation:	Unconjugated
Storage:	Store at -20°C.
Stability:	1 year
Gene Name:	homeobox D1
Database Link:	<a href="#">Entrez Gene 3231 Human Q9GZZ0</a>
Background:	This gene is a member of the Antp homeobox family and encodes a protein with a homeobox DNA-binding domain. This nuclear protein functions as a sequence-specific transcription factor that is involved in differentiation and limb development. Mutations in this gene have been associated with severe developmental defects on the anterior-posterior (a-p) limb axis.
Synonyms:	Hox-4.7; HOX4; HOX4G



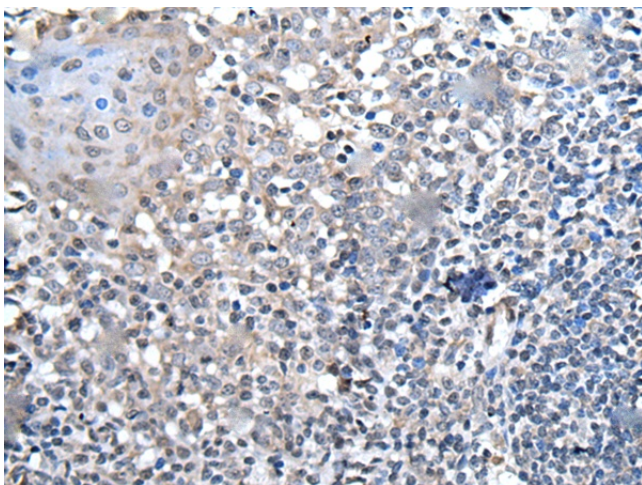
[View online »](#)

**Product images:**

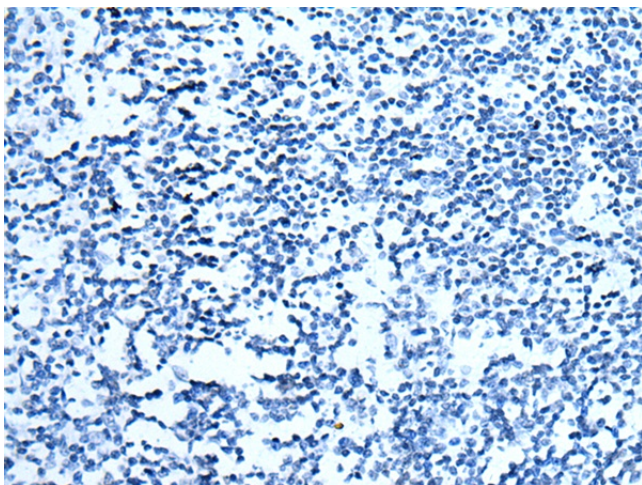
Immunohistochemistry of paraffin-embedded Human thyroid cancer tissue using TA371954 (HOXD1 Antibody) at dilution 1/25 (Original magnification: ×200)



Immunohistochemistry of paraffin-embedded Human thyroid cancer tissue using TA371954 (HOXD1 Antibody) at dilution 1/25, treated with synthetic peptide. (Original magnification: ×200)



Immunohistochemistry of paraffin-embedded Human tonsil tissue using TA371954 (HOXD1 Antibody) at dilution 1/25 (Original magnification: ×200)



Immunohistochemistry of paraffin-embedded Human tonsil tissue using TA371954 (HOXD1 Antibody) at dilution 1/25, treated with synthetic peptide. (Original magnification: ×200)