

Product datasheet for **TA371952S**

ABCD1 Rabbit Polyclonal Antibody

Product data:

Product Type:	Primary Antibodies
Applications:	IHC
Recommended Dilution:	IHC: 60-450 Positive control: Human thyroid cancer Predicted cell location: Cell membrane
Reactivity:	Human, Mouse
Host:	Rabbit
Isotype:	IgG
Clonality:	Polyclonal
Immunogen:	Synthetic peptide of human ABCD1
Formulation:	pH7.4 PBS, 0.05% NaN ₃ , 40% Glycerol
Concentration:	lot specific
Purification:	Antigen affinity purification
Conjugation:	Unconjugated
Storage:	Store at -20°C.
Stability:	1 year
Gene Name:	ATP binding cassette subfamily D member 1
Database Link:	Entrez Gene 215 Human P33897



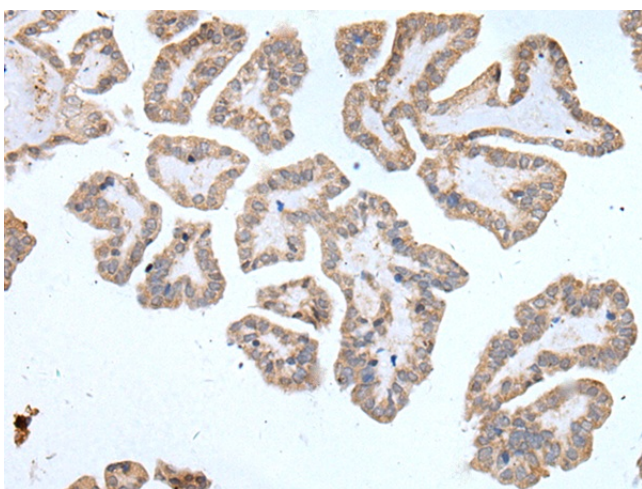
[View online »](#)

Background:

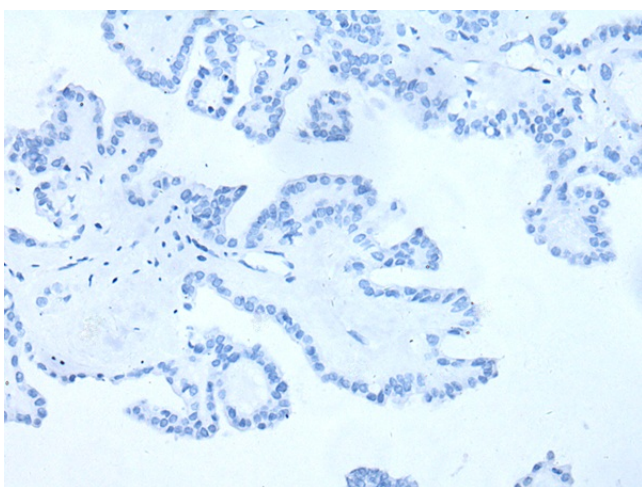
The protein encoded by this gene is a member of the superfamily of ATP-binding cassette (ABC) transporters. ABC proteins transport various molecules across extra- and intra-cellular membranes. ABC genes are divided into seven distinct subfamilies (ABC1, MDR/TAP, MRP, ALD, OABP, GCN20, White). This protein is a member of the ALD subfamily, which is involved in peroxisomal import of fatty acids and/or fatty acyl-CoAs in the organelle. All known peroxisomal ABC transporters are half transporters which require a partner half transporter molecule to form a functional homodimeric or heterodimeric transporter. This peroxisomal membrane protein is likely involved in the peroxisomal transport or catabolism of very long chain fatty acids. Defects in this gene have been identified as the underlying cause of adrenoleukodystrophy, an X-chromosome recessively inherited demyelinating disorder of the nervous system.

Synonyms:

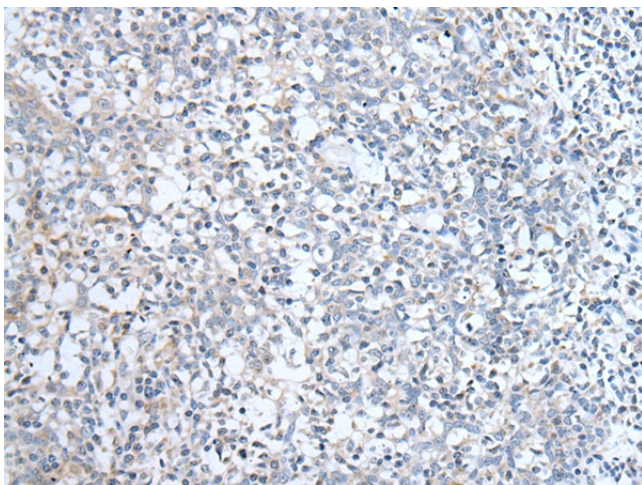
ABC42; adrenoleukodystrophy; ALD; ALDP; AMN

Product images:

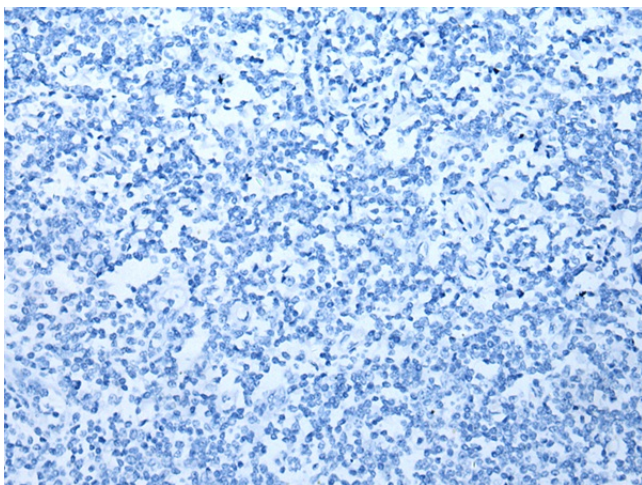
Immunohistochemistry of paraffin-embedded Human thyroid cancer tissue using [TA371952] (ABCD1 Antibody) at dilution 1/80 (Original magnification: x200)



Immunohistochemistry of paraffin-embedded Human thyroid cancer tissue using [TA371952] (ABCD1 Antibody) at dilution 1/80, treated with synthetic peptide. (Original magnification: x200)



Immunohistochemistry of paraffin-embedded Human tonsil tissue using [TA371952] (ABCD1 Antibody) at dilution 1/80 (Original magnification: ×200)



Immunohistochemistry of paraffin-embedded Human tonsil tissue using [TA371952] (ABCD1 Antibody) at dilution 1/80, treated with synthetic peptide. (Original magnification: ×200)