

Product datasheet for **TA371949S**

Macrophage Inflammatory Protein 4 (CCL18) Rabbit Polyclonal Antibody

Product data:

Product Type:	Primary Antibodies
Applications:	WB
Recommended Dilution:	WB: 500-2000 WB positive control: Human lung tissue lysate
Reactivity:	Human
Host:	Rabbit
Isotype:	IgG
Clonality:	Polyclonal
Immunogen:	Synthetic peptide of human CCL18
Formulation:	pH7.4 PBS, 0.05% NaN ₃ , 40% Glycerol
Concentration:	lot specific
Purification:	Antigen affinity purification
Conjugation:	Unconjugated
Storage:	Store at -20°C.
Stability:	1 year
Predicted Protein Size:	10 kDa
Gene Name:	C-C motif chemokine ligand 18
Database Link:	Entrez Gene 6362 Human P55774

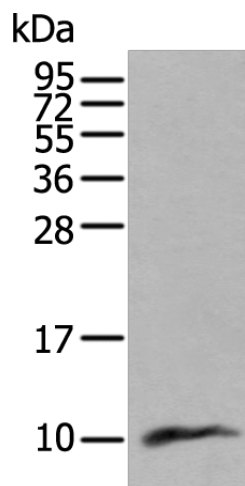
Background: This antimicrobial gene is one of several Cys-Cys (CC) cytokine genes clustered on the q arm of chromosome 17. Cytokines are a family of secreted proteins involved in immunoregulatory and inflammatory processes. The CC cytokines are proteins characterized by two adjacent cysteines. The cytokine encoded by this gene displays chemotactic activity for naive T cells, CD4⁺ and CD8⁺ T cells and nonactivated lymphocytes, but not for monocytes or granulocytes. This chemokine attracts naive T lymphocytes toward dendritic cells and activated macrophages in lymph nodes. It may play a role in both humoral and cell-mediated immunity responses.

Synonyms: AMAC-1; AMAC1; Ckb7; DC-CK1; DCCK1; MIP-4; MIP4; PARC; SCYA18



[View online »](#)

Product images:



Gel: 12%SDS-PAGE
Lysate: 40 μ g
Lane: Human lung tissue lysate
Primary antibody: [TA371949] (CCL18 Antibody) at dilution 1/400
Secondary antibody: Goat anti rabbit IgG at 1/8000 dilution
Exposure time: 2 minutes