

Product datasheet for **TA371938S**

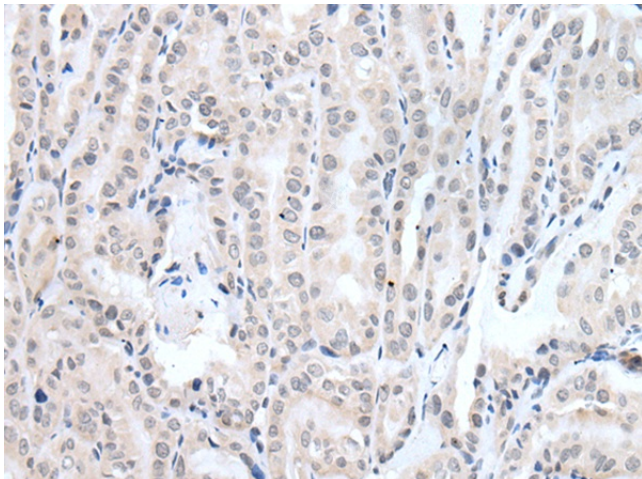
LRR67 (PPP1R42) Rabbit Polyclonal Antibody

Product data:

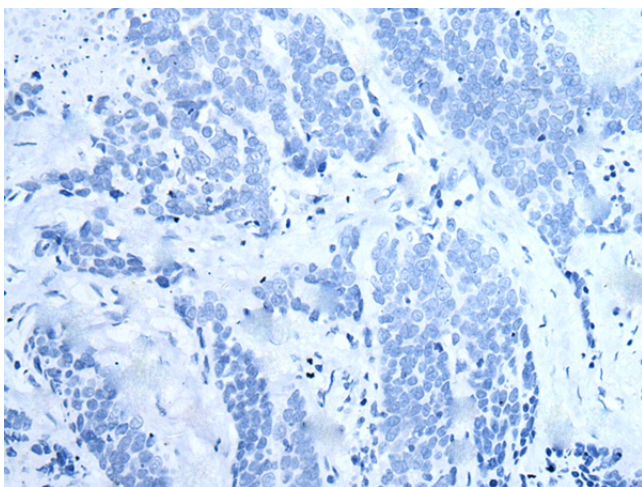
Product Type:	Primary Antibodies
Applications:	IHC
Recommended Dilution:	IHC: 25-100 Positive control: Human thyroid cancer Predicted cell location: Nucleus
Reactivity:	Human, Mouse
Host:	Rabbit
Isotype:	IgG
Clonality:	Polyclonal
Immunogen:	Synthetic peptide of human PPP1R42
Formulation:	pH7.4 PBS, 0.05% NaN ₃ , 40% Glycerol
Concentration:	lot specific
Purification:	Antigen affinity purification
Conjugation:	Unconjugated
Storage:	Store at -20°C.
Stability:	1 year
Gene Name:	protein phosphatase 1 regulatory subunit 42
Database Link:	Entrez Gene 286187 Human Q7Z4L9
Background:	Regulates phosphatase activity of protein phosphatase 1 (PP1) complexes in the testis.
Synonyms:	1700011J18Rik; 4930418G15Rik; Lrrc67; TLRR



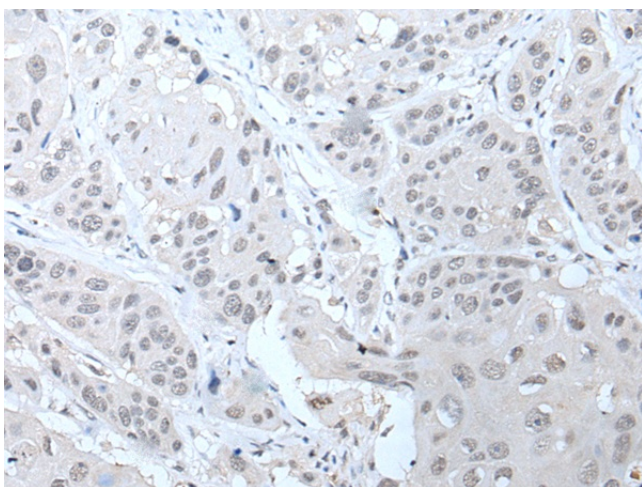
[View online »](#)

Product images:

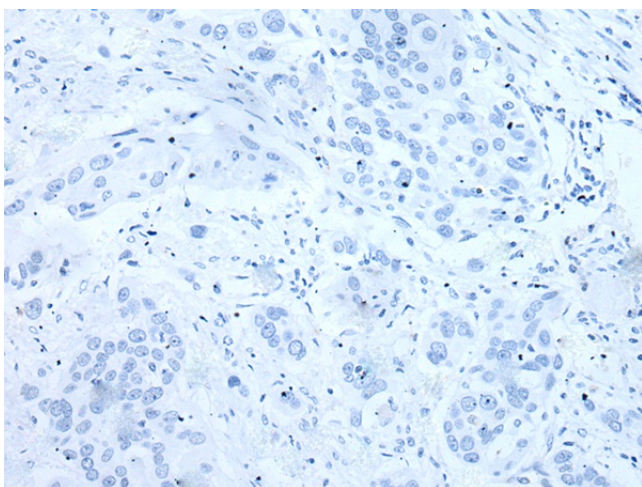
Immunohistochemistry of paraffin-embedded Human thyroid cancer tissue using [TA371938] (PPP1R42 Antibody) at dilution 1/20 (Original magnification: $\times 200$)



Immunohistochemistry of paraffin-embedded Human thyroid cancer tissue using [TA371938] (PPP1R42 Antibody) at dilution 1/20, treated with synthetic peptide. (Original magnification: $\times 200$)



Immunohistochemistry of paraffin-embedded Human liver cancer tissue using [TA371938] (PPP1R42 Antibody) at dilution 1/20 (Original magnification: $\times 200$)



Immunohistochemistry of paraffin-embedded Human liver cancer tissue using [TA371938] (PPP1R42 Antibody) at dilution 1/20, treated with synthetic peptide. (Original magnification: $\times 200$)