

Product datasheet for **TA371935S**

LAT Rabbit Polyclonal Antibody

Product data:

Product Type:	Primary Antibodies
Applications:	IHC, WB
Recommended Dilution:	WB: 200-1000 WB positive control: Human lymph gland tissue lysate IHC: 25-100 Positive control: Human thyroid cancer Predicted cell location: Cell membrane and Cytoplasm
Reactivity:	Human, Rat
Host:	Rabbit
Isotype:	IgG
Clonality:	Polyclonal
Immunogen:	Synthetic peptide of human LAT
Formulation:	pH7.4 PBS, 0.05% NaN ₃ , 40% Glycerol
Concentration:	lot specific
Purification:	Antigen affinity purification
Conjugation:	Unconjugated
Storage:	Store at -20°C.
Stability:	1 year
Predicted Protein Size:	28 kDa
Gene Name:	linker for activation of T-cells
Database Link:	Entrez Gene 27040 Human O43561



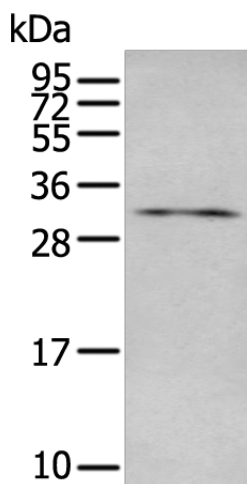
[View online »](#)

Background:

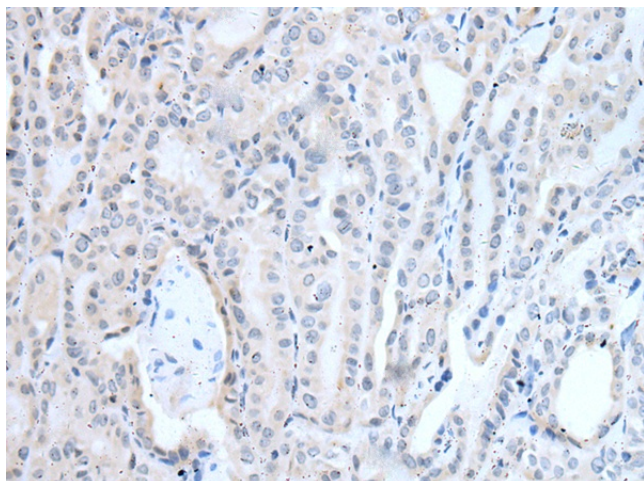
The protein encoded by this gene is phosphorylated by ZAP-70/Syk protein tyrosine kinases following activation of the T-cell antigen receptor (TCR) signal transduction pathway. This transmembrane protein localizes to lipid rafts and acts as a docking site for SH2 domain-containing proteins. Upon phosphorylation, this protein recruits multiple adaptor proteins and downstream signaling molecules into multimolecular signaling complexes located near the site of TCR engagement. Alternative splicing results in multiple transcript variants encoding different isoforms.

Synonyms:

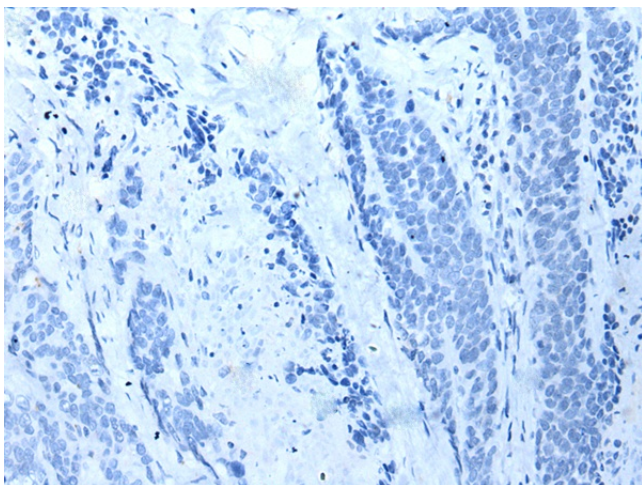
LAT1; p36-38; pp36

Product images:

Gel: 12%SDS-PAGE
Lysate: 40 µg
Lane: Human lymph gland tissue lysate
Primary antibody: [TA371935] (LAT Antibody) at dilution 1/350
Secondary antibody: Goat anti rabbit IgG at 1/8000 dilution
Exposure time: 1 minute



Immunohistochemistry of paraffin-embedded Human thyroid cancer tissue using [TA371935] (LAT Antibody) at dilution 1/30 (Original magnification: ×200)



Immunohistochemistry of paraffin-embedded Human thyroid cancer tissue using [TA371935] (LAT Antibody) at dilution 1/30, treated with synthetic peptide. (Original magnification: ×200)