

## Product datasheet for **TA371933S**

### **MAGEB1 Rabbit Polyclonal Antibody**

#### **Product data:**

|                         |   |
|-------------------------|---|
| Product Type:           | Primary Antibodies  |
| Applications:           | WB  |
| Recommended Dilution:   | WB: 200-1000<br>WB positive control: Human testis tissue and HEPG2 cell lysates |
| Reactivity:             | Human   |
| Host:                   | Rabbit  |
| Isotype:                | IgG   |
| Clonality:              | Polyclonal  |
| Immunogen:              | Synthetic peptide of human MAGEB1   |
| Formulation:            | pH7.4 PBS, 0.05% NaN <sub>3</sub> , 40% Glycerol                                |
| Concentration:          | lot specific  |
| Purification:           | Antigen affinity purification   |
| Conjugation:            | Unconjugated  |
| Storage:                | Store at -20°C.   |
| Stability:              | 1 year  |
| Predicted Protein Size: | 39 kDa  |
| Gene Name:              | MAGE family member B1   |
| Database Link:          | <a href="#">Entrez Gene 4112 Human P43366</a>                                   |



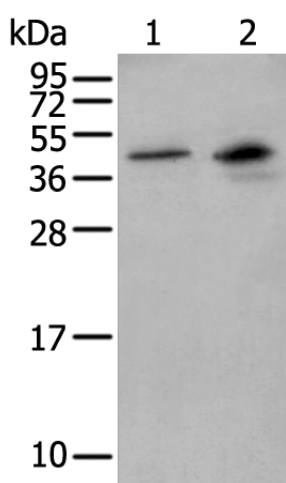
[View online »](#)

**Background:**

This gene is a member of the MAGEB gene family. The members of this family have their entire coding sequences located in the last exon, and the encoded proteins show 50 to 68% sequence identity to each other. The promoters and first exons of the MAGEB genes show considerable variability, suggesting that the existence of this gene family enables the same function to be expressed under different transcriptional controls. This gene is localized in the DSS (dosage-sensitive sex reversal) critical region, and expressed in testis and in a significant fraction of tumors of various histological types. This gene and other MAGEB members are clustered on chromosome Xp22-p21. Multiple alternatively spliced transcript variants encoding the same protein have been found for this gene, however, the full length nature of some variants has not been defined.

**Synonyms:**

CT3.1; DAM10; MAGE-Xp; MAGEL1; MAGEXP; MGC9322

**Product images:**

Gel: 12%SDS-PAGE  
Lysate: 40  $\mu$ g  
Lane 1-2: Human testis tissue and HEPG2 cell lysates  
Primary antibody: [TA371933] (MAGEB1 Antibody) at dilution 1/200  
Secondary antibody: Goat anti rabbit IgG at 1/8000 dilution  
Exposure time: 3 seconds