

Product datasheet for **TA371931S**

Netrin G2 Ligand (LRRC4) Rabbit Polyclonal Antibody

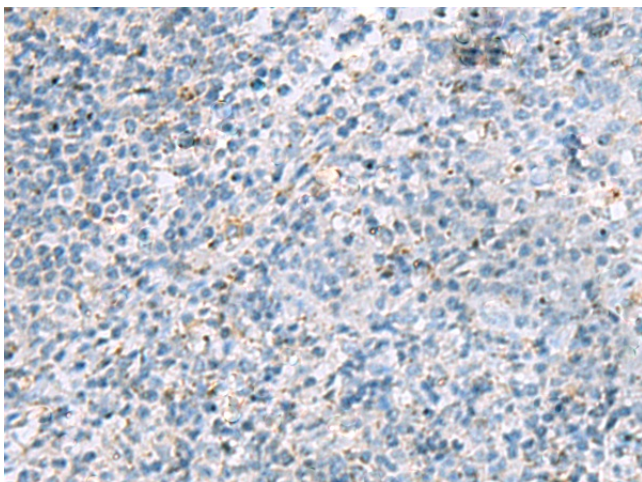
Product data:

Product Type:	Primary Antibodies
Applications:	IHC
Recommended Dilution:	IHC: 25-50 Positive control: Human tonsil Predicted cell location: Cell membrane
Reactivity:	Human, Mouse, Rat
Host:	Rabbit
Isotype:	IgG
Clonality:	Polyclonal
Immunogen:	Synthetic peptide of human LRRC4
Formulation:	pH7.4 PBS, 0.05% NaN ₃ , 40% Glycerol
Concentration:	lot specific
Purification:	Antigen affinity purification
Conjugation:	Unconjugated
Storage:	Store at -20°C.
Stability:	1 year
Gene Name:	leucine rich repeat containing 4
Database Link:	Entrez Gene 64101 Human Q9HBW1
Background:	This gene is significantly downregulated in primary brain tumors. Synaptic adhesion protein. Regulates the formation of excitatory synapses through the recruitment of pre-and-postsynaptic proteins. Organize the lamina/pathway-specific differentiation of dendrites. Plays a important role for auditory synaptic responses. Involved in the suppression of glioma (By similarity).
Synonyms:	BAG; MGC133342; MGC133343; NAG14

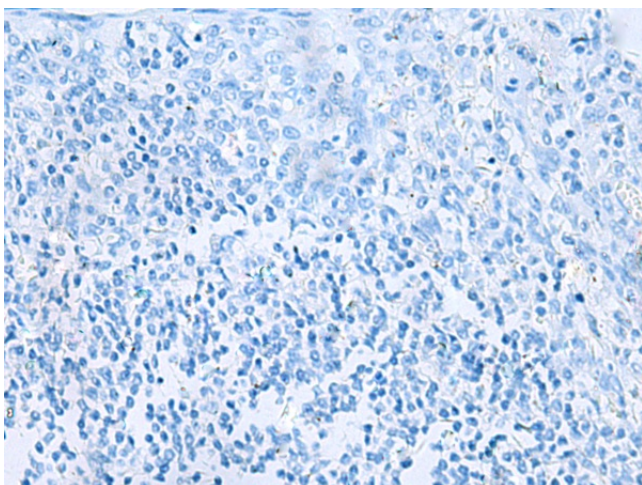


[View online »](#)

Product images:



Immunohistochemistry of paraffin-embedded Human tonsil tissue using [TA371931] (LRRC4 Antibody) at dilution 1/40 (Original magnification: ×200)



Immunohistochemistry of paraffin-embedded Human tonsil tissue using [TA371931] (LRRC4 Antibody) at dilution 1/40, treated with synthetic peptide. (Original magnification: ×200)