

Product datasheet for **TA371921S**

IRF2 Rabbit Polyclonal Antibody

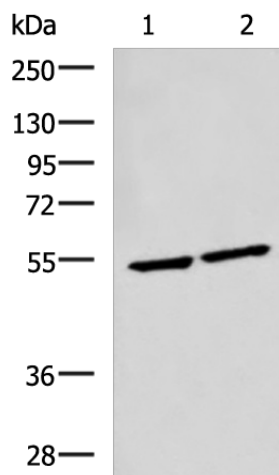
Product data:

Product Type:	Primary Antibodies
Applications:	WB
Recommended Dilution:	WB: 1000-5000 WB positive control: Raji and Jurkat cell lysates
Reactivity:	Human, Mouse
Host:	Rabbit
Isotype:	IgG
Clonality:	Polyclonal
Immunogen:	Synthetic peptide of human IRF2
Formulation:	pH7.4 PBS, 0.05% NaN ₃ , 40% Glycerol
Concentration:	lot specific
Purification:	Antigen affinity purification
Conjugation:	Unconjugated
Storage:	Store at -20°C.
Stability:	1 year
Predicted Protein Size:	39 kDa
Gene Name:	interferon regulatory factor 2
Database Link:	Entrez Gene 3660 Human P14316
Background:	IRF2 encodes interferon regulatory factor 2, a member of the interferon regulatory transcription factor (IRF) family. IRF2 competitively inhibits the IRF1-mediated transcriptional activation of interferons alpha and beta, and presumably other genes that employ IRF1 for transcription activation. However, IRF2 also functions as a transcriptional activator of histone H4.
Synonyms:	DKFZp686F0244; IRF-2



[View online »](#)

Product images:



Gel: 8%SDS-PAGE

Lysate: 40 μ g

Lane 1-2: Raji and Jurkat cell lysates

Primary antibody: [TA371921] (IRF2 Antibody) at dilution 1/1350

Secondary antibody: Goat anti rabbit IgG at 1/5000 dilution

Exposure time: 10 seconds