

Product datasheet for **TA371921**

IRF2 Rabbit Polyclonal Antibody

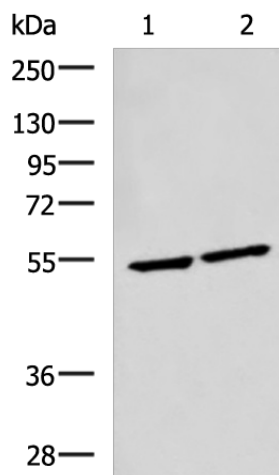
Product data:

| | |
|-------------------------|--|
| Product Type: | Primary Antibodies |
| Applications: | WB |
| Recommended Dilution: | WB: 1000-5000 WB positive control: Raji and Jurkat cell lysates |
| Reactivity: | Human, Mouse |
| Host: | Rabbit |
| Isotype: | IgG |
| Clonality: | Polyclonal |
| Immunogen: | Synthetic peptide of human IRF2 |
| Formulation: | pH7.4 PBS, 0.05% NaN ₃ , 40% Glycerol |
| Concentration: | lot specific |
| Purification: | Antigen affinity purification |
| Conjugation: | Unconjugated |
| Storage: | Store at -20°C. |
| Stability: | 1 year |
| Predicted Protein Size: | 39 kDa |
| Gene Name: | interferon regulatory factor 2 |
| Database Link: | Entrez Gene 3660 Human P14316 |
| Background: | IRF2 encodes interferon regulatory factor 2, a member of the interferon regulatory transcription factor (IRF) family. IRF2 competitively inhibits the IRF1-mediated transcriptional activation of interferons alpha and beta, and presumably other genes that employ IRF1 for transcription activation. However, IRF2 also functions as a transcriptional activator of histone H4. |
| Synonyms: | DKFZp686F0244; IRF-2 |



[View online »](#)

Product images:



Gel: 8%SDS-PAGE
Lysate: 40 μ g
Lane 1-2: Raji and Jurkat cell lysates
Primary antibody: TA371921 (IRF2 Antibody) at dilution 1/1350
Secondary antibody: Goat anti rabbit IgG at 1/5000 dilution
Exposure time: 10 seconds