

Product datasheet for **TA371914S**

IFNGR1 Rabbit Polyclonal Antibody

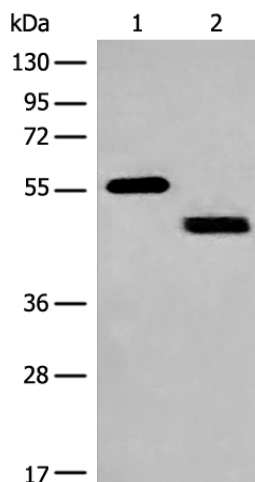
Product data:

Product Type:	Primary Antibodies
Applications:	IHC, WB
Recommended Dilution:	WB: 200-1000 WB positive control: Human lung tissue and HEPG2 cell lysates IHC: 10-50 Positive control: Human prostate cancer Predicted cell location: Cell membrane
Reactivity:	Human
Host:	Rabbit
Isotype:	IgG
Clonality:	Polyclonal
Immunogen:	Synthetic peptide of human IFNGR1
Formulation:	pH7.4 PBS, 0.05% NaN ₃ , 40% Glycerol
Concentration:	lot specific
Purification:	Antigen affinity purification
Conjugation:	Unconjugated
Storage:	Store at -20°C.
Stability:	1 year
Predicted Protein Size:	54 kDa
Gene Name:	interferon gamma receptor 1
Database Link:	Entrez Gene 3459 Human P15260
Background:	This gene (IFNGR1) encodes the ligand-binding chain (alpha) of the gamma interferon receptor. Human interferon-gamma receptor is a heterodimer of IFNGR1 and IFNGR2. A genetic variation in IFNGR1 is associated with susceptibility to Helicobacter pylori infection. In addition, defects in IFNGR1 are a cause of mendelian susceptibility to mycobacterial disease, also known as familial disseminated atypical mycobacterial infection.
Synonyms:	CD119; CDw119; FLJ45734; IFN-gamma-R1; IFNGR



[View online »](#)

Product images:



Gel: 8%SDS-PAGE

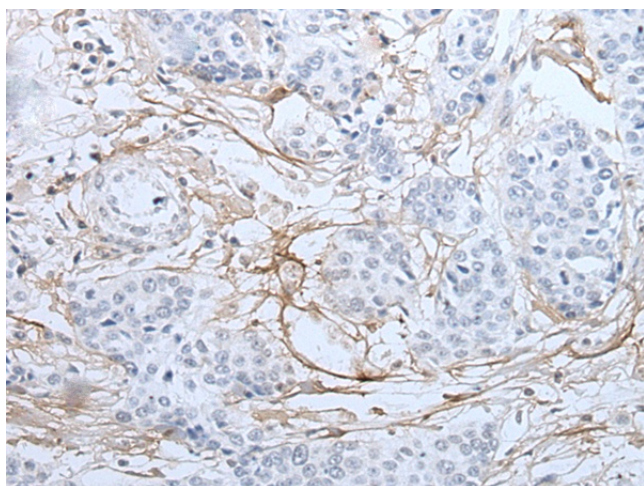
Lysate: 40 μ g

Lane 1-2: Human lung tissue and HEPG2 cell lysates

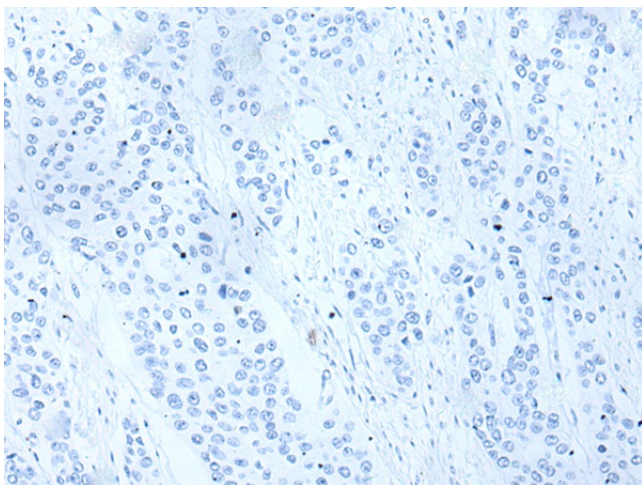
Primary antibody: [TA371914] (IFNGR1 Antibody) at dilution 1/200

Secondary antibody: Goat anti rabbit IgG at 1/8000 dilution

Exposure time: 10 seconds



Immunohistochemistry of paraffin-embedded Human prostate cancer tissue using [TA371914] (IFNGR1 Antibody) at dilution 1/25 (Original magnification: \times 200)



Immunohistochemistry of paraffin-embedded Human prostate cancer tissue using [TA371914] (IFNGR1 Antibody) at dilution 1/25, treated with synthetic peptide. (Original magnification: x200)