

## Product datasheet for **TA371909**

### Hsp47 (SERPINH1) Rabbit Polyclonal Antibody

#### Product data:

Product Type:	Primary Antibodies
Applications:	IHC, WB
Recommended Dilution:	WB: 200-1000 WB positive control: Hepg2□Hela and A431 cell□Human fetal liver tissue lysates IHC: 10-50 Positive control: Human cervical cancer Predicted cell location: Cytoplasm
Reactivity:	Human, Mouse
Host:	Rabbit
Isotype:	IgG
Clonality:	Polyclonal
Immunogen:	Synthetic peptide of human SERPINH1
Formulation:	pH7.4 PBS, 0.05% NaN <sub>3</sub> , 40% Glycerol
Concentration:	lot specific
Purification:	Antigen affinity purification
Conjugation:	Unconjugated
Storage:	Store at -20°C.
Stability:	1 year
Predicted Protein Size:	46 kDa
Gene Name:	serpin family H member 1
Database Link:	<a href="#">Entrez Gene 871 Human P50454</a>



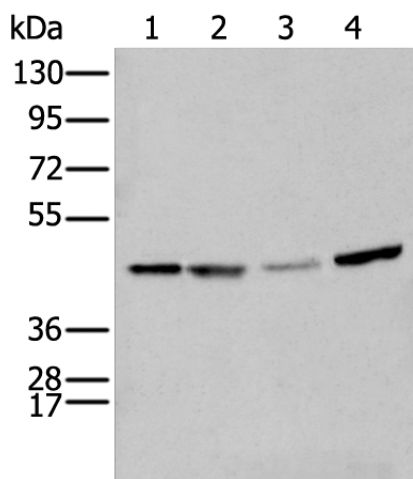
[View online »](#)

**Background:**

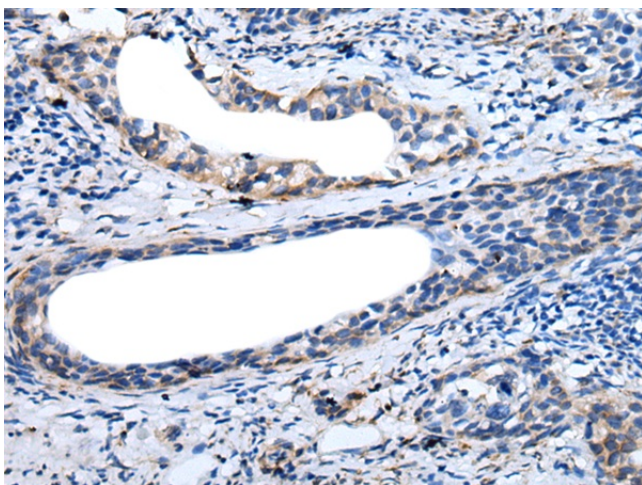
This gene encodes a member of the serpin superfamily of serine proteinase inhibitors. The encoded protein is localized to the endoplasmic reticulum and plays a role in collagen biosynthesis as a collagen-specific molecular chaperone. Autoantibodies to the encoded protein have been found in patients with rheumatoid arthritis. Expression of this gene may be a marker for cancer, and nucleotide polymorphisms in this gene may be associated with preterm birth caused by preterm premature rupture of membranes. Alternatively spliced transcript variants have been observed for this gene, and a pseudogene of this gene is located on the short arm of chromosome 9.

**Synonyms:**

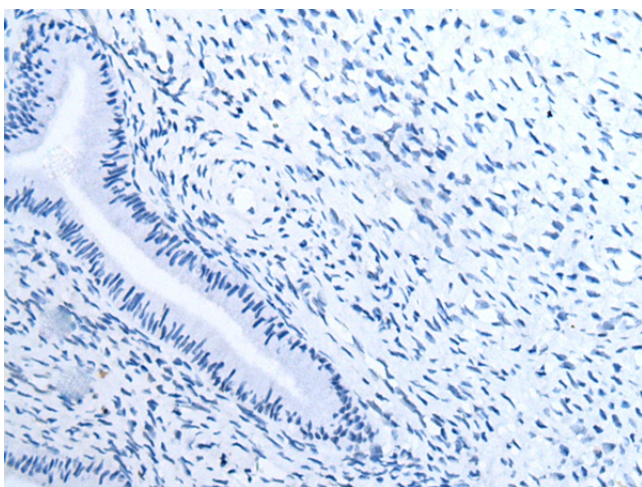
AsTP3; CBP1; CBP2; colligen; Colligin; colligin-1; colligin-2; gp46; HSP47; PIG14; PPR0M; RA-A47; SERPINH2

**Product images:**


Gel: 8%SDS-PAGE  
 Lysate: 40 µg  
 Lane 1-4: Hepg2  
 HeLa and A431 cell  
 Human fetal liver tissue lysates  
 Primary antibody: TA371909 (SERPINH1 Antibody) at dilution 1/250  
 Secondary antibody: Goat anti rabbit IgG at 1/8000 dilution  
 Exposure time: 1 minute



Immunohistochemistry of paraffin-embedded Human cervical cancer tissue using TA371909 (SERPINH1 Antibody) at dilution 1/25 (Original magnification: ×200)



Immunohistochemistry of paraffin-embedded Human cervical cancer tissue using TA371909 (SERPINH1 Antibody) at dilution 1/25, treated with synthetic peptide. (Original magnification: ×200)