

## Product datasheet for **TA371903**

### HOXD3 Rabbit Polyclonal Antibody

#### Product data:

<b>Product Type:</b>	Primary Antibodies
<b>Applications:</b>	IHC, WB
<b>Recommended Dilution:</b>	WB: 1000–5000 WB positive control: K562, Raji, A549, Hela, Jurkat cell lysates IHC: 50–100 Positive control: Human esophagus cancer Predicted cell location: Nucleus
<b>Reactivity:</b>	Human, Mouse
<b>Host:</b>	Rabbit
<b>Isotype:</b>	IgG
<b>Clonality:</b>	Polyclonal
<b>Immunogen:</b>	Synthetic peptide of human HOXD3
<b>Formulation:</b>	pH7.4 PBS, 0.05% NaN <sub>3</sub> , 40% Glycerol
<b>Concentration:</b>	lot specific
<b>Purification:</b>	Antigen affinity purification
<b>Conjugation:</b>	Unconjugated
<b>Storage:</b>	Store at –20°C.
<b>Stability:</b>	1 year
<b>Predicted Protein Size:</b>	46 kDa
<b>Gene Name:</b>	homeobox D3
<b>Database Link:</b>	<a href="#">Entrez Gene 3232 Human P31249</a>



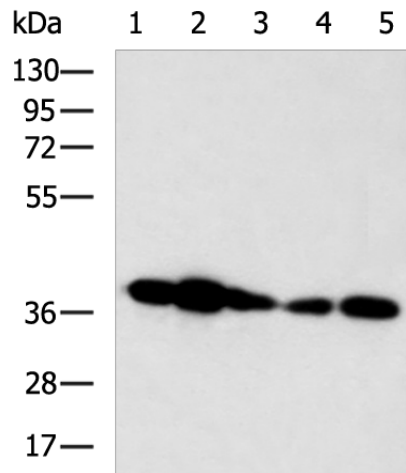
**Background:**

This gene belongs to the homeobox family of genes. The homeobox genes encode a highly conserved family of transcription factors that play an important role in morphogenesis in all multicellular organisms. Mammals possess four similar homeobox gene clusters, HOXA, HOXB, HOXC and HOXD, located on different chromosomes, consisting of 9 to 11 genes arranged in tandem. This gene is one of several homeobox HOXD genes located at 2q31-2q37 chromosome regions. Deletions that removed the entire HOXD gene cluster or 5' end of this cluster have been associated with severe limb and genital abnormalities. The protein encoded by this gene may play a role in the regulation of cell adhesion processes.

**Synonyms:**

Hox-4.1; Hox-4A; HOXD; HOX4; HOX4A; MGC10470; OTTHUMP00000205235

**Product images:**



Gel: 8%SDS-PAGE

Lysate: 40 µg

Lane 1-5: K562

Raji

A549

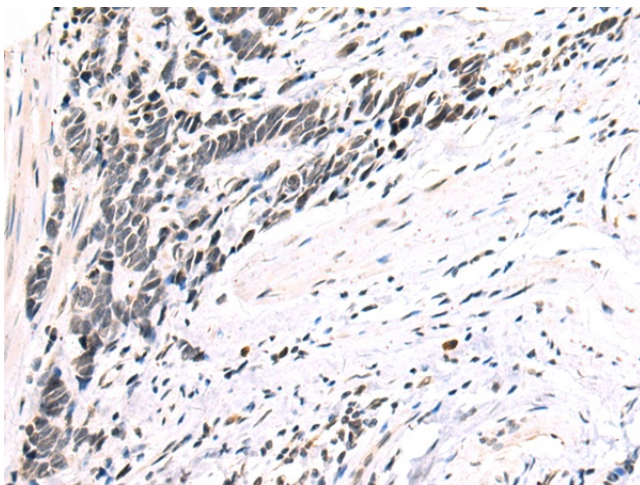
HeLa

Jurkat cell lysates

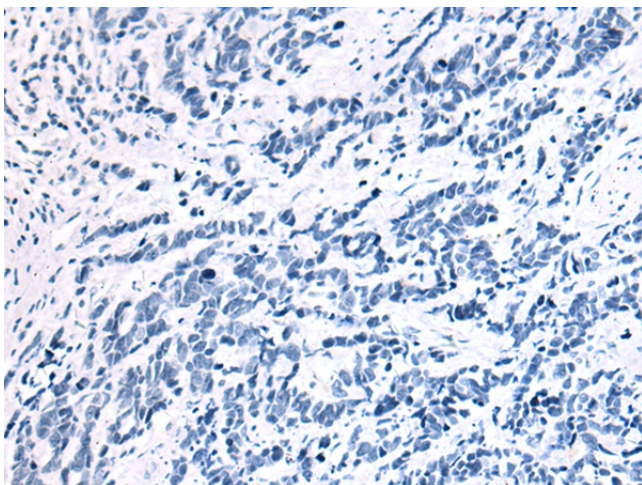
Primary antibody: TA371903 (HOXD3 Antibody)  
at dilution 1/1000

Secondary antibody: Goat anti rabbit IgG at  
1/5000 dilution

Exposure time: 1 minute



Immunohistochemistry of paraffin-  
embedded Human esophagus cancer tissue  
using TA371903 (HOXD3 Antibody) at dilution  
1/50 (Original magnification: ×200)



Immunohistochemistry of paraffin-embedded Human esophagus cancer tissue using TA371903 (HOXD3 Antibody) at dilution 1/50, treated with synthetic peptide. (Original magnification:  $\times 200$ )