

Product datasheet for **TA371897**

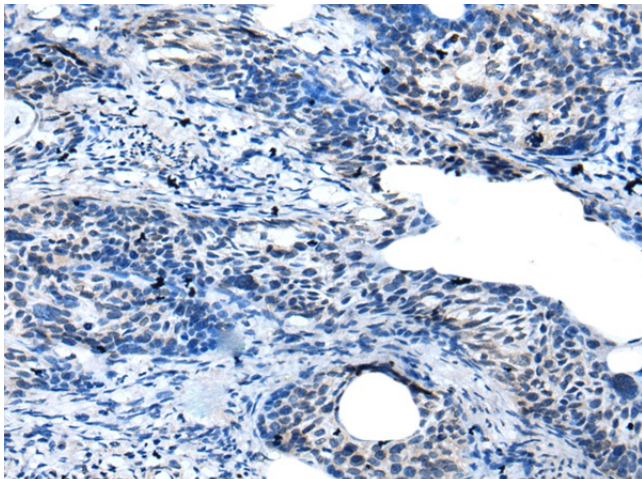
GAS2L3 Rabbit Polyclonal Antibody

Product data:

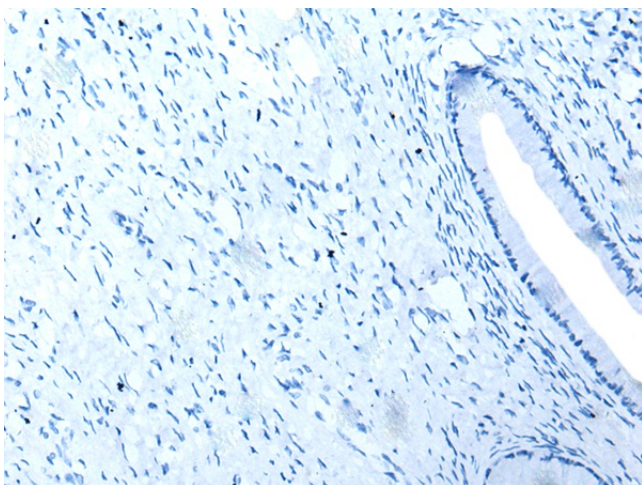
Product Type:	Primary Antibodies
Applications:	IHC
Recommended Dilution:	IHC: 10-50 Positive control: Human cervical cancer Predicted cell location: Cytoplasm
Reactivity:	Human
Host:	Rabbit
Isotype:	IgG
Clonality:	Polyclonal
Immunogen:	Synthetic peptide of human GAS2L3
Formulation:	pH7.4 PBS, 0.05% NaN ₃ , 40% Glycerol
Concentration:	lot specific
Purification:	Antigen affinity purification
Conjugation:	Unconjugated
Storage:	Store at -20°C.
Stability:	1 year
Gene Name:	growth arrest specific 2 like 3
Database Link:	Entrez Gene 283431 Human Q86XJ1
Background:	Gas2L3 (growth arrest-specific 2 like 3) is a 694 amino acid protein that contains one calponin-homology (CH) domain and may function in a similar manner to Gas2. The gene encoding Gas2L3 maps to human chromosome 12, which encodes over 1,100 genes and comprises approximately 4.5% of the human genome. Cytoskeletal linker protein. May promote and stabilize the formation of the actin and microtubule network.
Synonyms:	GAS2L3



[View online »](#)

Product images:

Immunohistochemistry of paraffin-embedded Human cervical cancer tissue using TA371897 (GAS2L3 Antibody) at dilution 1/25 (Original magnification: $\times 200$)



Immunohistochemistry of paraffin-embedded Human cervical cancer tissue using TA371897 (GAS2L3 Antibody) at dilution 1/25, treated with synthetic peptide. (Original magnification: $\times 200$)