

Product datasheet for **TA371893S**

Gastrokine 2 (GKN2) Rabbit Polyclonal Antibody

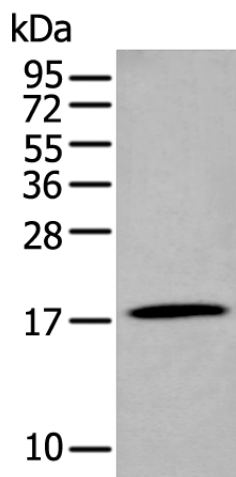
Product data:

Product Type:	Primary Antibodies
Applications:	WB
Recommended Dilution:	WB: 500-2000 WB positive control: Human stomach tissue lysate
Reactivity:	Human
Host:	Rabbit
Isotype:	IgG
Clonality:	Polyclonal
Immunogen:	Synthetic peptide of human GKN2
Formulation:	pH7.4 PBS, 0.05% NaN ₃ , 40% Glycerol
Concentration:	lot specific
Purification:	Antigen affinity purification
Conjugation:	Unconjugated
Storage:	Store at -20°C.
Stability:	1 year
Predicted Protein Size:	20 kDa
Gene Name:	gastrokine 2
Database Link:	Entrez Gene 200504 Human Q86XP6
Background:	Gastrokine-2 is a putative gastric cancer-specific tumor suppressor gene, the loss of which is known to be involved in the development and progression of gastric cancer, and restoration of gastrokine-2 expression inhibits growth of gastric cancer cells in vitro. However, the underlying mechanism of these effects requires elucidation.
Synonyms:	BLOT; blottin; GDDR; PRO813; TFIZ1; VLT1465



[View online »](#)

Product images:



Gel: 12%SDS-PAGE
 Lysate: 40 µg
 Lane: Human stomach tissue lysate
 Primary antibody: [TA371893] (GKN2 Antibody) at dilution 1/250
 Secondary antibody: Goat anti rabbit IgG at 1/8000 dilution
 Exposure time: 20 seconds