

## Product datasheet for **TA371889S**

### FSH beta (FSHB) Rabbit Polyclonal Antibody

#### Product data:

Product Type:	Primary Antibodies
Applications:	IHC, WB
Recommended Dilution:	WB: 200-1000 WB positive control: HL-60 cell lysate IHC: 20-100 Positive control: Human colorectal cancer Predicted cell location: Secreted
Reactivity:	Human, Mouse, Rat
Host:	Rabbit
Isotype:	IgG
Clonality:	Polyclonal
Immunogen:	Synthetic peptide of human FSHB
Formulation:	pH7.4 PBS, 0.05% NaN <sub>3</sub> , 40% Glycerol
Concentration:	lot specific
Purification:	Antigen affinity purification
Conjugation:	Unconjugated
Storage:	Store at -20°C.
Stability:	1 year
Predicted Protein Size:	15 kDa
Gene Name:	follicle stimulating hormone beta subunit
Database Link:	<a href="#">Entrez Gene 2488 Human P01225</a>

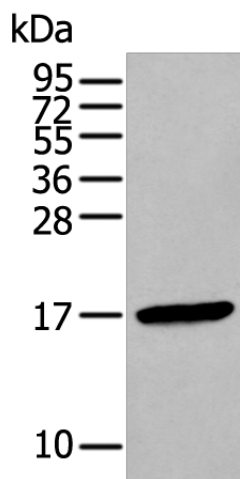
**Background:** The pituitary glycoprotein hormone family includes follicle-stimulating hormone, luteinizing hormone, chorionic gonadotropin, and thyroid-stimulating hormone. All of these glycoproteins consist of an identical alpha subunit and a hormone-specific beta subunit. This gene encodes the beta subunit of follicle-stimulating hormone. In conjunction with luteinizing hormone, follicle-stimulating hormone induces egg and sperm production. Alternative splicing results in two transcript variants encoding the same protein.



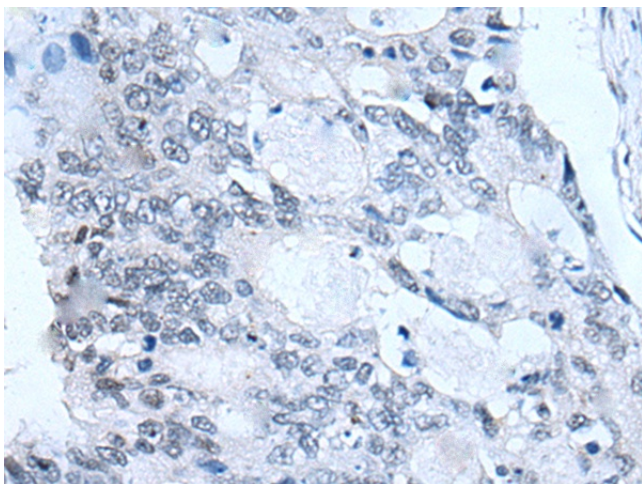
[View online »](#)

Synonyms: FSH-B; FSH-beta

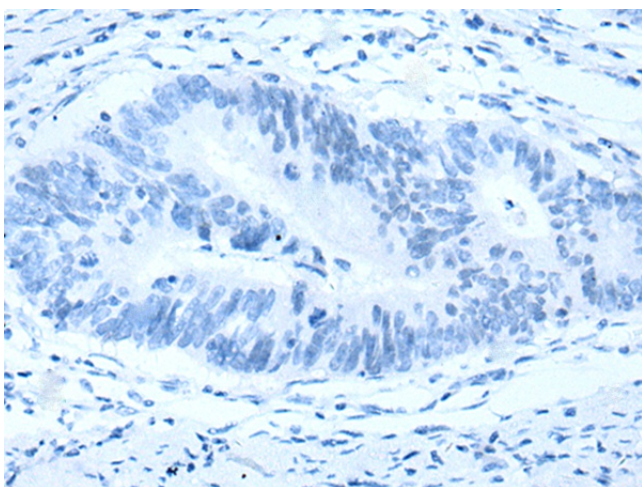
### Product images:



Gel: 12%SDS-PAGE  
Lysate: 40  $\mu$ g  
Lane: HL-60 cell lysate  
Primary antibody: [TA371889] (FSHB Antibody) at dilution 1/200  
Secondary antibody: Goat anti rabbit IgG at 1/8000 dilution  
Exposure time: 20 seconds



Immunohistochemistry of paraffin-embedded Human colorectal cancer tissue using [TA371889] (FSHB Antibody) at dilution 1/30 (Original magnification:  $\times$ 200)



Immunohistochemistry of paraffin-embedded Human colorectal cancer tissue using [TA371889] (FSHB Antibody) at dilution 1/30, treated with synthetic peptide. (Original magnification:  $\times 200$ )