

## Product datasheet for **TA371888S**

### FABP3 Rabbit Polyclonal Antibody

#### Product data:

Product Type:	Primary Antibodies
Applications:	IHC, WB
Recommended Dilution:	WB: 200-1000 WB positive control: Human heart tissue IHC: 25-100 Positive control: Human brain Predicted cell location: Cytoplasm
Reactivity:	Human, Mouse, Rat
Host:	Rabbit
Isotype:	IgG
Clonality:	Polyclonal
Immunogen:	Synthetic peptide of human FABP3
Formulation:	pH7.4 PBS, 0.05% NaN <sub>3</sub> , 40% Glycerol
Concentration:	lot specific
Purification:	Antigen affinity purification
Conjugation:	Unconjugated
Storage:	Store at -20°C.
Stability:	1 year
Predicted Protein Size:	15 kDa
Gene Name:	fatty acid binding protein 3
Database Link:	<a href="#">Entrez Gene 2170 Human P05413</a>



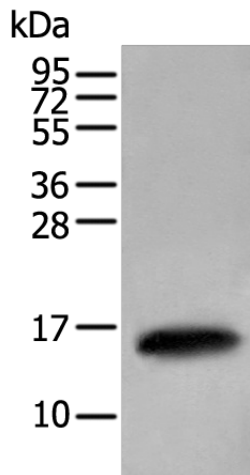
[View online »](#)

**Background:**

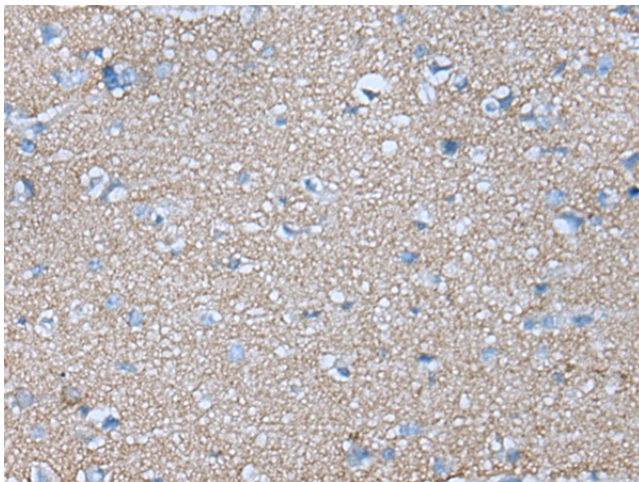
The intracellular fatty acid-binding proteins (FABPs) belongs to a multigene family. FABPs are divided into at least three distinct types, namely the hepatic-, intestinal- and cardiac-type. They form 14-15 kDa proteins and are thought to participate in the uptake, intracellular metabolism and/or transport of long-chain fatty acids. They may also be responsible in the modulation of cell growth and proliferation. Fatty acid-binding protein 3 gene contains four exons and its function is to arrest growth of mammary epithelial cells. This gene is a candidate tumor suppressor gene for human breast cancer.

**Synonyms:**

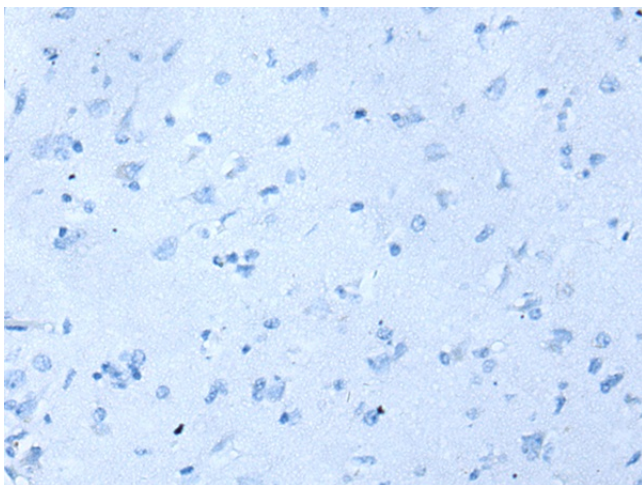
FABP11; H-FABP; M-FABP; MDGI; O-FABP

**Product images:**

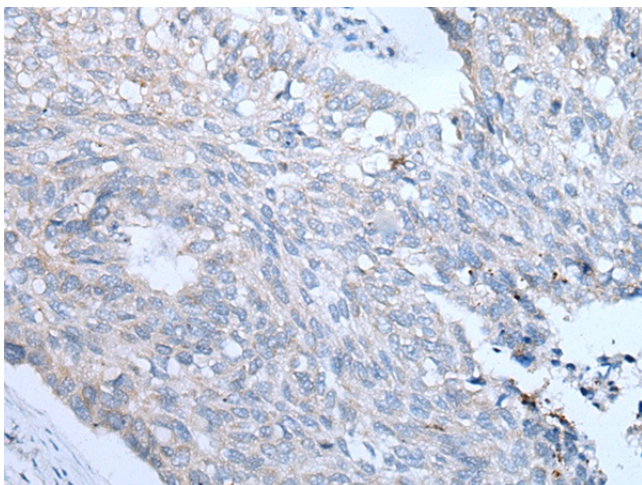
Gel: 12%SDS-PAGE  
Lysate: 40 µg  
Lane: Human heart tissue lysate  
Primary antibody: [TA371888] (FABP3 Antibody) at dilution 1/350  
Secondary antibody: Goat anti rabbit IgG at 1/8000 dilution  
Exposure time: 1 second



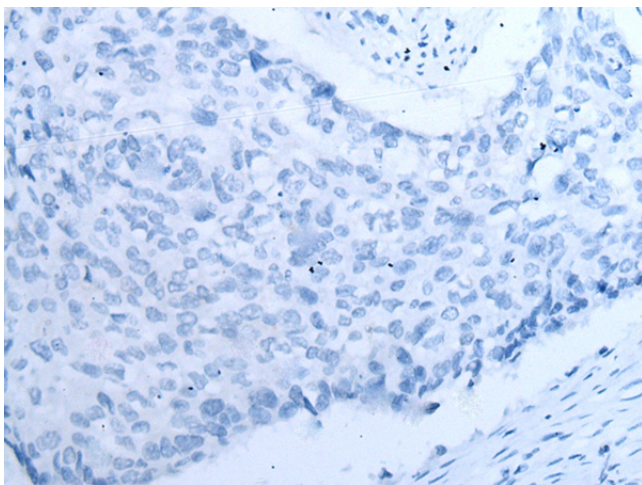
Immunohistochemistry of paraffin-embedded Human brain tissue using [TA371888] (FABP3 Antibody) at dilution 1/35 (Original magnification: ×200)



Immunohistochemistry of paraffin-embedded Human brain tissue using [TA371888] (FABP3 Antibody) at dilution 1/35, treated with synthetic peptide. (Original magnification:  $\times 200$ )



Immunohistochemistry of paraffin-embedded Human lung cancer tissue using [TA371888] (FABP3 Antibody) at dilution 1/35 (Original magnification:  $\times 200$ )



Immunohistochemistry of paraffin-embedded Human lung cancer tissue using [TA371888] (FABP3 Antibody) at dilution 1/35, treated with synthetic peptide. (Original magnification:  $\times 200$ )