

## Product datasheet for **TA371888**

### FABP3 Rabbit Polyclonal Antibody

#### Product data:

|                         |   |
|-------------------------|---|
| Product Type:           | Primary Antibodies  |
| Applications:           | IHC, WB   |
| Recommended Dilution:   | WB: 200-1000<br>WB positive control: Human heart tissue<br>IHC: 25-100<br>Positive control: Human brain<br>Predicted cell location: Cytoplasm |
| Reactivity:             | Human, Mouse, Rat   |
| Host:                   | Rabbit  |
| Isotype:                | IgG   |
| Clonality:              | Polyclonal  |
| Immunogen:              | Synthetic peptide of human FABP3  |
| Formulation:            | pH7.4 PBS, 0.05% NaN <sub>3</sub> , 40% Glycerol  |
| Concentration:          | lot specific  |
| Purification:           | Antigen affinity purification   |
| Conjugation:            | Unconjugated  |
| Storage:                | Store at -20°C.   |
| Stability:              | 1 year  |
| Predicted Protein Size: | 15 kDa  |
| Gene Name:              | fatty acid binding protein 3  |
| Database Link:          | <a href="#">Entrez Gene 2170 Human P05413</a>   |



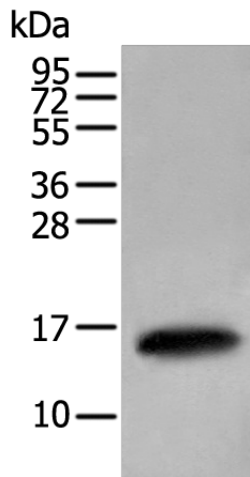
[View online »](#)

**Background:**

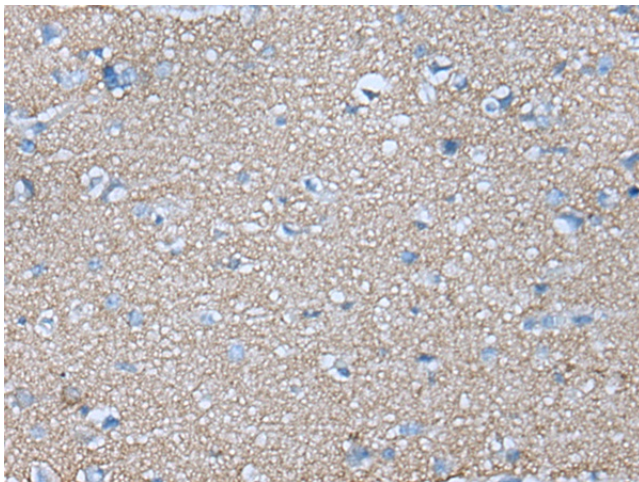
The intracellular fatty acid-binding proteins (FABPs) belongs to a multigene family. FABPs are divided into at least three distinct types, namely the hepatic-, intestinal- and cardiac-type. They form 14-15 kDa proteins and are thought to participate in the uptake, intracellular metabolism and/or transport of long-chain fatty acids. They may also be responsible in the modulation of cell growth and proliferation. Fatty acid-binding protein 3 gene contains four exons and its function is to arrest growth of mammary epithelial cells. This gene is a candidate tumor suppressor gene for human breast cancer.

**Synonyms:**

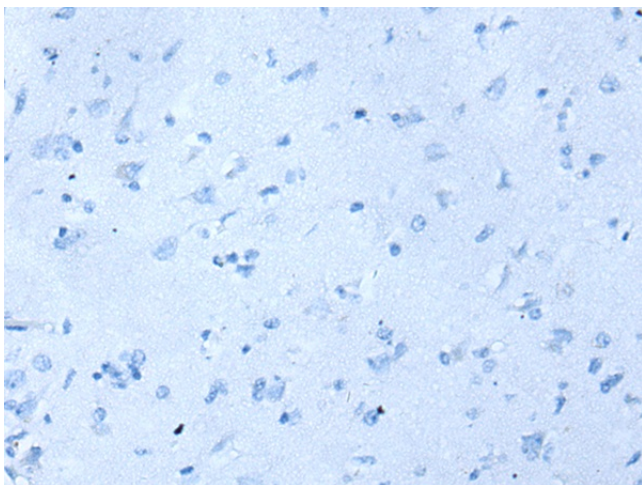
FABP11; H-FABP; M-FABP; MDGI; O-FABP

**Product images:**


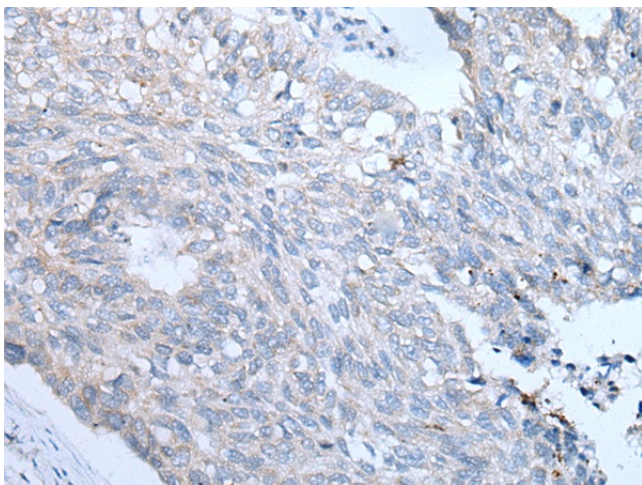
Gel: 12%SDS-PAGE  
 Lysate: 40 µg  
 Lane: Human heart tissue lysate  
 Primary antibody: TA371888 (FABP3 Antibody) at dilution 1/350  
 Secondary antibody: Goat anti rabbit IgG at 1/8000 dilution  
 Exposure time: 1 second



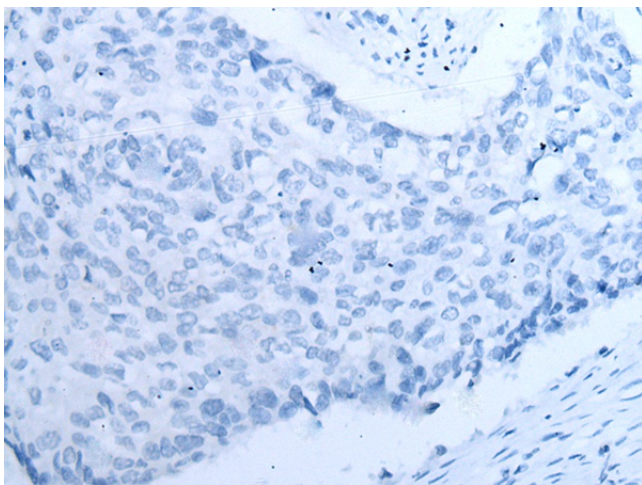
Immunohistochemistry of paraffin-embedded Human brain tissue using TA371888 (FABP3 Antibody) at dilution 1/35 (Original magnification: ×200)



Immunohistochemistry of paraffin-embedded Human brain tissue using TA371888 (FABP3 Antibody) at dilution 1/35, treated with synthetic peptide. (Original magnification:  $\times 200$ )



Immunohistochemistry of paraffin-embedded Human lung cancer tissue using TA371888 (FABP3 Antibody) at dilution 1/35 (Original magnification:  $\times 200$ )



Immunohistochemistry of paraffin-embedded Human lung cancer tissue using TA371888 (FABP3 Antibody) at dilution 1/35, treated with synthetic peptide. (Original magnification:  $\times 200$ )