

## Product datasheet for **TA371883S**

### Desmin (DES) Rabbit Polyclonal Antibody

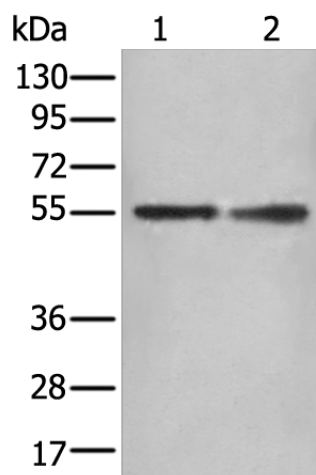
#### Product data:

Product Type:	Primary Antibodies
Applications:	IHC, WB
Recommended Dilution:	WB: 200-1000 WB positive control: Jurkat and Hela cell IHC: 25-100 Positive control: Human breast cancer Predicted cell location: Cytoplasm
Reactivity:	Human, Mouse, Rat
Host:	Rabbit
Isotype:	IgG
Clonality:	Polyclonal
Immunogen:	Synthetic peptide of human DES
Formulation:	pH7.4 PBS, 0.05% NaN <sub>3</sub> , 40% Glycerol
Concentration:	lot specific
Purification:	Antigen affinity purification
Conjugation:	Unconjugated
Storage:	Store at -20°C.
Stability:	1 year
Predicted Protein Size:	54 kDa
Gene Name:	desmin
Database Link:	<a href="#">Entrez Gene 1674 Human P17661</a>
Background:	This gene encodes a muscle-specific class III intermediate filament. Homopolymers of this protein form a stable intracytoplasmic filamentous network connecting myofibrils to each other and to the plasma membrane. Mutations in this gene are associated with desmin-related myopathy, a familial cardiac and skeletal myopathy (CSM), and with distal myopathies.
Synonyms:	CMD1I; CSM1; CSM2; desmin; FLJ12025; FLJ39719; FLJ41013; FLJ41793

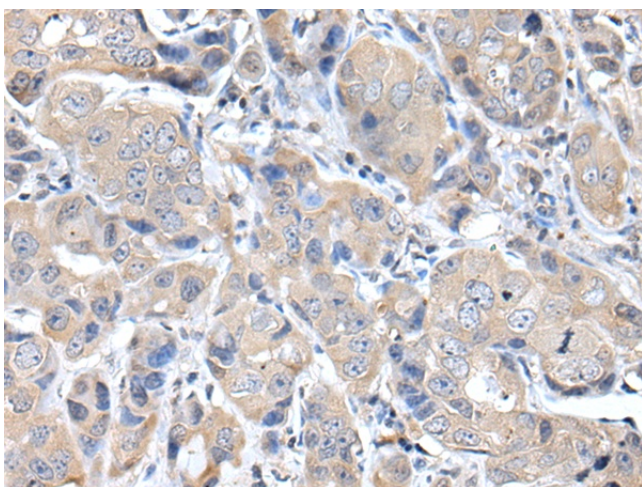


[View online »](#)

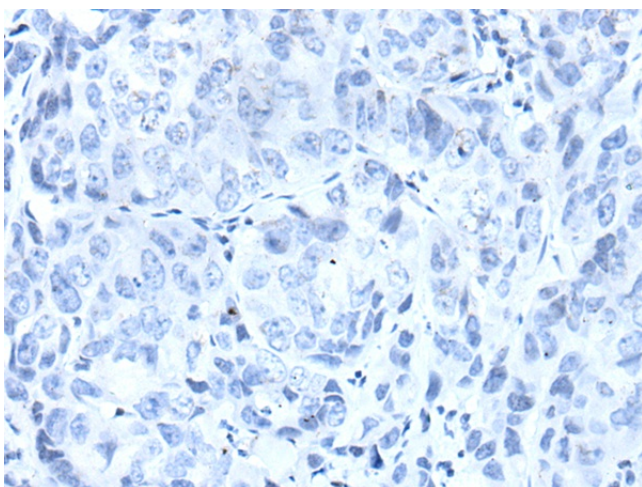
## Product images:



Gel: 8%SDS-PAGE  
Lysate: 40 µg  
Lane 1-2: Jurkat and HeLa cell lysates  
Primary antibody: [TA371883] (DES Antibody) at dilution 1/300  
Secondary antibody: Goat anti rabbit IgG at 1/8000 dilution  
Exposure time: 10 seconds



Immunohistochemistry of paraffin-embedded Human breast cancer tissue using [TA371883] (DES Antibody) at dilution 1/30 (Original magnification: x200)



Immunohistochemistry of paraffin-embedded Human breast cancer tissue using [TA371883] (DES Antibody) at dilution 1/30, treated with synthetic peptide. (Original magnification: ×200)