

## Product datasheet for **TA371868**

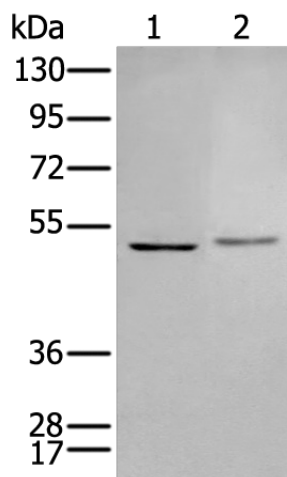
### PTOV1 Rabbit Polyclonal Antibody

#### Product data:

|                         |   |
|-------------------------|---|
| Product Type:           | Primary Antibodies  |
| Applications:           | IHC, WB   |
| Recommended Dilution:   | WB: 200-1000<br>WB positive control: Rat brain tissue and Mouse brain tissue<br>IHC: 25-100<br>Positive control: Human lung cancer<br>Predicted cell location: Nucleus  |
| Reactivity:             | Human, Mouse, Rat   |
| Host:                   | Rabbit  |
| Isotype:                | IgG   |
| Clonality:              | Polyclonal  |
| Immunogen:              | Synthetic peptide of human PTOV1  |
| Formulation:            | pH7.4 PBS, 0.05% NaN <sub>3</sub> , 40% Glycerol  |
| Concentration:          | lot specific  |
| Purification:           | Antigen affinity purification   |
| Conjugation:            | Unconjugated  |
| Storage:                | Store at -20°C.   |
| Stability:              | 1 year  |
| Predicted Protein Size: | 47 kDa  |
| Gene Name:              | prostate tumor overexpressed 1  |
| Database Link:          | <a href="#">Entrez Gene 53635 Human Q86YD1</a>  |
| Background:             | This gene encodes a protein that was found to be overexpressed in prostate adenocarcinomas. The encoded protein was found to interact with the lipid raft protein flotillin-1 and shuttle it from the cytoplasm to the nucleus in a cell cycle dependent manner. Alternative splicing of this gene results in multiple transcript variants. |
| Synonyms:               | ACID2; DKFZp586I111; MGC71475; PTOV-1   |



[View online »](#)

**Product images:**

Gel: 8%SDS-PAGE

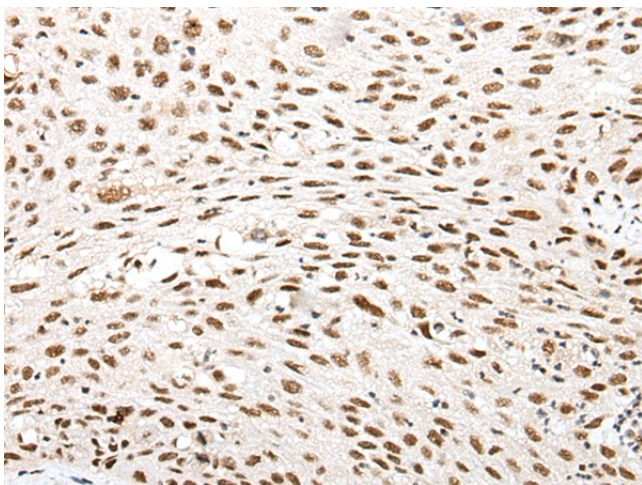
Lysate: 40  $\mu$ g

Lane 1-2: Rat brain tissue and Mouse brain tissue lysates

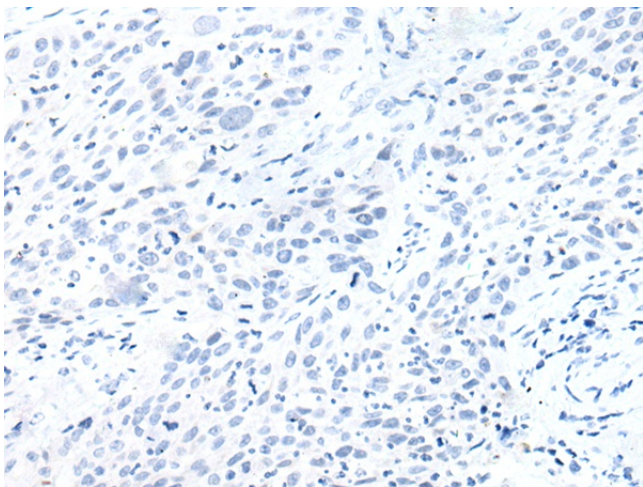
Primary antibody: TA371868 (PTOV1 Antibody) at dilution 1/200

Secondary antibody: Goat anti rabbit IgG at 1/8000 dilution

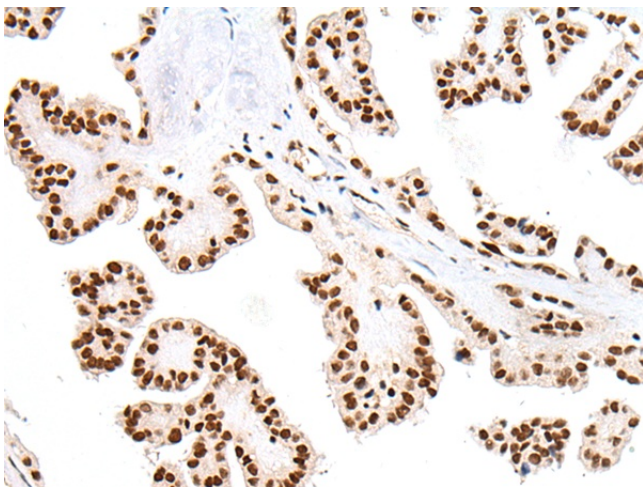
Exposure time: 40 seconds



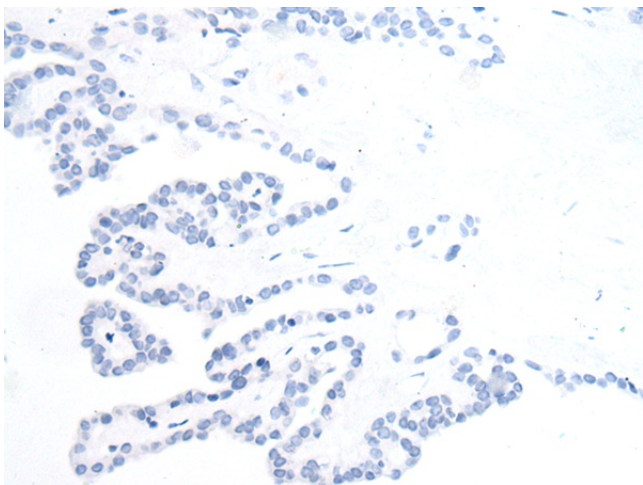
Immunohistochemistry of paraffin-embedded Human lung cancer tissue using TA371868 (PTOV1 Antibody) at dilution 1/25 (Original magnification:  $\times$ 200)



Immunohistochemistry of paraffin-embedded Human lung cancer tissue using TA371868 (PTOV1 Antibody) at dilution 1/25, treated with synthetic peptide. (Original magnification:  $\times 200$ )



Immunohistochemistry of paraffin-embedded Human thyroid cancer tissue using TA371868 (PTOV1 Antibody) at dilution 1/25 (Original magnification:  $\times 200$ )



Immunohistochemistry of paraffin-embedded Human thyroid cancer tissue using TA371868 (PTOV1 Antibody) at dilution 1/25, treated with synthetic peptide. (Original magnification:  $\times 200$ )