

Product datasheet for **TA371864**

D4 (ARHGDIB) Rabbit Polyclonal Antibody

Product data:

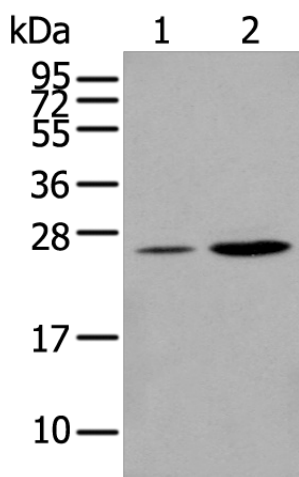
Product Type:	Primary Antibodies
Applications:	IHC, WB
Recommended Dilution:	WB: 200-1000 WB positive control: Human spleen tissue and Jurkat cell IHC: 25-100 Positive control: Human brain Predicted cell location: Cytoplasm and Nucleus
Reactivity:	Human, Mouse
Host:	Rabbit
Isotype:	IgG
Clonality:	Polyclonal
Immunogen:	Synthetic peptide of human ARHGDIB
Formulation:	pH7.4 PBS, 0.05% NaN ₃ , 40% Glycerol
Concentration:	lot specific
Purification:	Antigen affinity purification
Conjugation:	Unconjugated
Storage:	Store at -20°C.
Stability:	1 year
Predicted Protein Size:	23 kDa
Gene Name:	Rho GDP dissociation inhibitor beta
Database Link:	Entrez Gene 397 Human P52566
Background:	Members of the Rho (or ARH) protein family (see MIM 165390) and other Ras-related small GTP-binding proteins (see MIM 179520) are involved in diverse cellular events, including cell signaling, proliferation, cytoskeletal organization, and secretion. The GTP-binding proteins are active only in the GTP-bound state. At least 3 classes of proteins tightly regulate cycling between the GTP-bound and GDP-bound states: GTPase-activating proteins (GAPs), guanine nucleotide-releasing factors (GRFs), and GDP-dissociation inhibitors (GDIs).



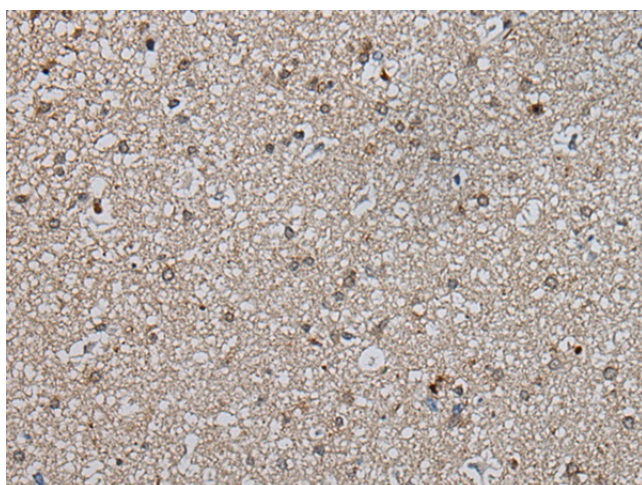
[View online »](#)

Synonyms: D4; GDIA2; GDID4; Ly-GDI; LYGDI; RAP1GN1; RhoGDI2

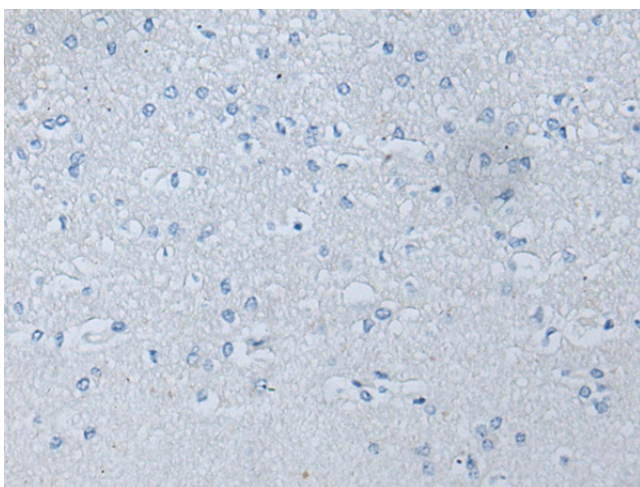
Product images:



Gel: 12%SDS-PAGE
 Lysate: 40 µg
 Lane 1-2: Human spleen tissue and Jurkat cell lysates
 Primary antibody: TA371864 (ARHGDIB Antibody) at dilution 1/300
 Secondary antibody: Goat anti rabbit IgG at 1/8000 dilution
 Exposure time: 5 seconds



Immunohistochemistry of paraffin-embedded Human brain tissue using TA371864 (ARHGDIB Antibody) at dilution 1/25 (Original magnification: ×200)



Immunohistochemistry of paraffin-embedded Human brain tissue using TA371864 (ARHGDIB Antibody) at dilution 1/25, treated with synthetic peptide. (Original magnification: $\times 200$)