

## Product datasheet for **TA371855S**

### STEAP2 Rabbit Polyclonal Antibody

#### Product data:

Product Type:	Primary Antibodies
Applications:	WB
Recommended Dilution:	WB: 500-2000 WB positive control: Human prostate tissue
Reactivity:	Human, Mouse
Host:	Rabbit
Isotype:	IgG
Clonality:	Polyclonal
Immunogen:	Synthetic peptide of human STEAP2
Formulation:	pH7.4 PBS, 0.05% NaN <sub>3</sub> , 40% Glycerol
Concentration:	lot specific
Purification:	Antigen affinity purification
Conjugation:	Unconjugated
Storage:	Store at -20°C.
Stability:	1 year
Predicted Protein Size:	56 kDa
Gene Name:	STEAP2 metalloredutase
Database Link:	<a href="#">Entrez Gene 261729 Human Q8NFT2</a>

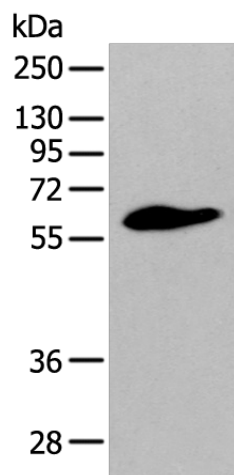
**Background:** This gene is a member of the STEAP family and encodes a multi-pass membrane protein that localizes to the Golgi complex, the plasma membrane, and the vesicular tubular structures in the cytosol. A highly similar protein in mouse has both ferrireductase and cupric reductase activity, and stimulates the cellular uptake of both iron and copper in vitro. Increased transcriptional expression of the human gene is associated with prostate cancer progression. Alternate transcriptional splice variants, encoding different isoforms, have been characterized.

**Synonyms:** IPCA-1; IPCA1; OTTHUMP00000067572; OTTHUMP00000067575; PCANAP1; PUMPCn; STAMP1; STMP



[View online »](#)

## Product images:



Gel: 8%SDS-PAGE  
Lysate: 40  $\mu$ g  
Lane: Human prostate tissue  
Primary antibody: [TA371855] (STEAP2 Antibody) at dilution 1/400  
Secondary antibody: Goat anti rabbit IgG at 1/8000 dilution  
Exposure time: 20 seconds