

## Product datasheet for **TA371852**

### NCX1 (SLC8A1) Rabbit Polyclonal Antibody

#### Product data:

Product Type:	Primary Antibodies
Applications:	IHC
Recommended Dilution:	IHC: 25-100 Positive control: Human brain Predicted cell location: Cell membrane
Reactivity:	Human, Mouse, Rat
Host:	Rabbit
Isotype:	IgG
Clonality:	Polyclonal
Immunogen:	Synthetic peptide of human SLC8A1
Formulation:	pH7.4 PBS, 0.05% NaN <sub>3</sub> , 40% Glycerol
Concentration:	lot specific
Purification:	Antigen affinity purification
Conjugation:	Unconjugated
Storage:	Store at -20°C.
Stability:	1 year
Gene Name:	solute carrier family 8 member A1
Database Link:	<a href="#">Entrez Gene 6546 Human P32418</a>



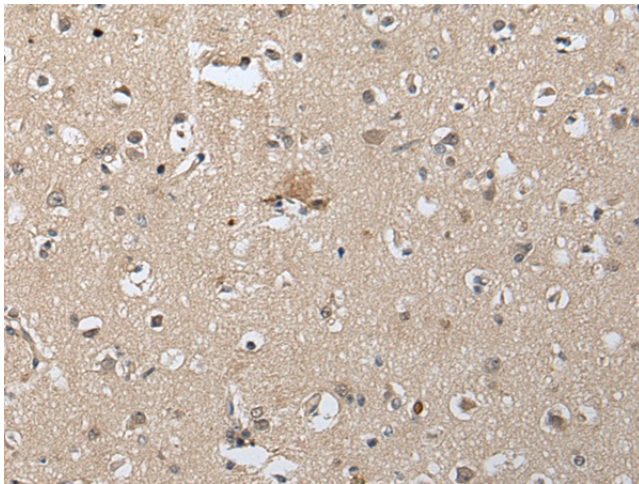
[View online »](#)

**Background:**

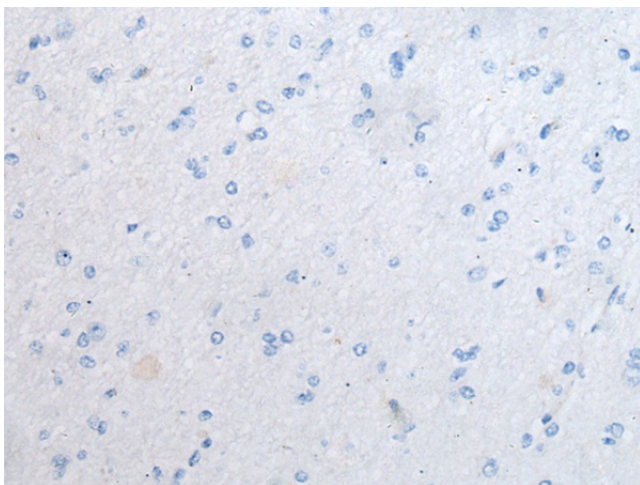
In cardiac myocytes, Ca(2+) concentrations alternate between high levels during contraction and low levels during relaxation. The increase in Ca(2+) concentration during contraction is primarily due to release of Ca(2+) from intracellular stores. However, some Ca(2+) also enters the cell through the sarcolemma (plasma membrane). During relaxation, Ca(2+) is sequestered within the intracellular stores. To prevent overloading of intracellular stores, the Ca(2+) that entered across the sarcolemma must be extruded from the cell. The Na(+)-Ca(2+) exchanger is the primary mechanism by which the Ca(2+) is extruded from the cell during relaxation. In the heart, the exchanger may play a key role in digitalis action. The exchanger is the dominant mechanism in returning the cardiac myocyte to its resting state following excitation.

**Synonyms:**

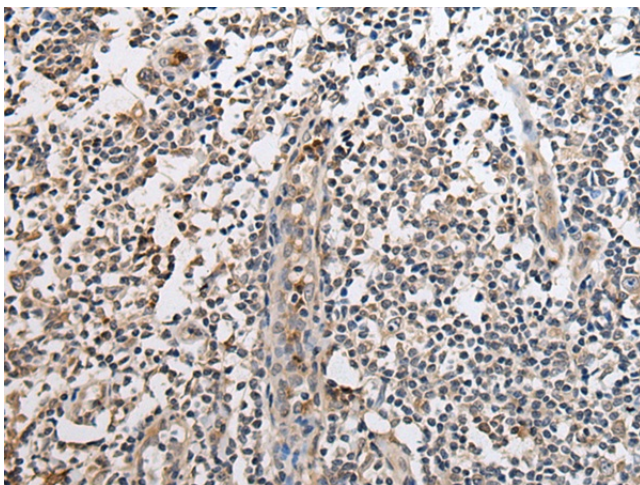
CNC; DKFZp779F0871; FLJ37694; FLJ43417; MGC119581; NCX1; OTTHUMP00000128378; OTTHUMP00000201569; OTTHUMP00000201570; OTTHUMP00000201587; OTTHUMP00000201589

**Product images:**

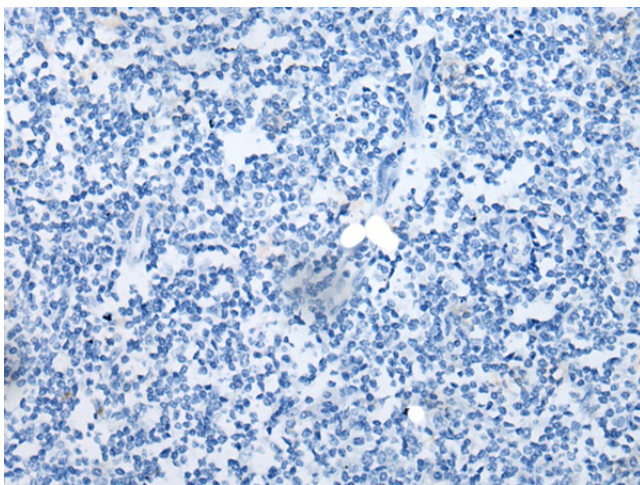
Immunohistochemistry of paraffin-embedded Human brain tissue using TA371852 (SLC8A1 Antibody) at dilution 1/25 (Original magnification: ×200)



Immunohistochemistry of paraffin-embedded Human brain tissue using TA371852 (SLC8A1 Antibody) at dilution 1/25, treated with synthetic peptide. (Original magnification: ×200)



Immunohistochemistry of paraffin-embedded Human tonsil tissue using TA371852 (SLC8A1 Antibody) at dilution 1/25 (Original magnification: ×200)



Immunohistochemistry of paraffin-embedded Human tonsil tissue using TA371852 (SLC8A1 Antibody) at dilution 1/25, treated with synthetic peptide. (Original magnification: ×200)